



ANNUAL REPORT

January 1 – December 31, 2017



Frank Lloyd
Wright Trust

flwright.org



Mission and Core Values	3
Letter from the Chairman of the Board	4
Report of the President & CEO	5
2017 Wright Night 150.....	13
2017 Wright Plus 150 Housewalk.....	14
Staff.....	15
Education: Teachers and Families.....	16
Internship Program.....	17
Visitor Information.....	18
In Partnership with the Community	19
Foundation and Business Contributors	20
Donors	21
Society Level Members	25
Volunteers.....	32
Financial Statements.....	36

Cover Image: Sanctuary, Unity Temple. Photo: James Caulfield.

Image (left) Photo: Donte Tatum.

TABLE OF CONTENTS

MISSION

The mission of the Trust is to engage, educate and inspire the public through interpretation of Frank Lloyd Wright's design legacy and preservation of his original sites for future generations.

CORE VALUES

ENGAGEMENT

Engaging a broad and diverse local, regional, national and international audience through a dynamic cultural tourism program, a comprehensive and interactive website, and consistent marketing and communications initiatives.

EDUCATION

Affirming the contemporary relevance of Wright's design legacy by educating K-12 students through innovative design programs that nurture individual vision; by presenting quality adult enrichment programs, national/international travel programs; and by producing electronic/print publications.

INSPIRATION

Inspiring our audience through powerful aesthetic experiences of authentic Wright sites, preserved to Wright's original design vision.

FOR FUTURE GENERATIONS

Developing the Trust's resources and maintaining the Trust's financial stability in order to sustain Wright's original sites for future generations and ensure a lasting and secure future for the Trust, supported by strong community and business relationships and by dynamic Board engagement.



DEAR MEMBERS AND FRIENDS

In 2017, the Frank Lloyd Wright Trust marked 150 years since the birth of Frank Lloyd Wright and reaffirmed his enduring contribution to the history of world architecture and design. It was a year of celebration and organizational progress for the Trust.

The reopening of Unity Temple and commencement of public tours after a two-year closure for its state-of-the-art restoration was a triumph. This year the Trust began interior restoration of the Frederick C. Robie House, an exacting preservation process that will unfold for our visitors throughout 2018.

Our education mission was elevated in the public eye with a major symposium in partnership with the Chicago Architecture Biennial and a new educator's online resources center. *Teaching by Design* is a 21st century platform that can be used by public school, private school, and home school educators across the country.

In a year of unprecedented cultural and community partnerships, the Board announced the acquisition of property adjacent to Wright's Home and Studio in Oak Park. This investment looks toward future expansion of our cultural and social activities that educate and benefit our community and further enhance our mission.

My sincere appreciation to my fellow Board members for their exceptional commitment and generosity. To the Trust's loyal donors, volunteers, members and friends, your support makes the Trust a vibrant organization and allows us to fulfill our mission. Finally, my thanks to our President & CEO Celeste Adams and our staff, whose talents resulted in a landmark year, in which we all take pride.



John M. Rafkin
Chairman of the Board of Directors

BOARD OF DIRECTORS 2017

JOHN M. RAFKIN, CHAIRMAN OF THE BOARD
ROBERT MILLER, VICE CHAIR AND CHAIR,
EXECUTIVE COMMITTEE
DAVID DUNNING, TREASURER
GRAHAM J. RARITY, SECRETARY

PETER R. GEORGE
DAVID HERNANDEZ
PATRICIA HUNT
KURT NEUMANN
ROBERT PASIN
DON ROSENWINKEL
KELLY SMALL
RANDALL S. THORNE
TIM SAMUELSON, ADVISORY MEMBER



John Rafkin, 2017 Chairman, Board of Directors

LETTER FROM THE CHAIRMAN OF THE BOARD

In celebration of the 150th anniversary of Wright's birth, the Trust collaborated with many Chicago area cultural partners throughout 2017 to recognize Wright's legacy in Chicago, where the majority of his built works remain today. Partnerships with the Art Institute of Chicago, School of the Art Institute of Chicago, Chicago History Museum, the University of Chicago, Oriental Institute at the University of Chicago, City of Chicago Department of Cultural Affairs, Chicago Park District, and Chicago Architecture Biennial elevated the Trust in public awareness.

Ongoing programs were enhanced through partnership with Unity Temple – reopening public tours and programs after its brilliant restoration. A new online exhibition, *1905: Japan Through the Lens of Frank Lloyd Wright*, and a new education website, *Teaching by*

Design, created by the Trust education department in collaboration with Chicago Public Schools Teachers, were two digital initiatives established in 2017.

Additional 150th activities included a Prairie Style Passport uniting six great public access Prairie buildings with the Home and Studio where they were created, a national online photo contest, and a memorable Wright Plus weekend. Record setting annual attendance at our five sites of 152,000 was expanded through *flwright.org* virtual attendance of 753,000 unique visits and over 3 million page-views.

Commencement of the interior restoration of Robie House and acquisition of property adjacent to the Home and Studio are capital initiatives that distinguish the health and vitality of the Trust as we work to better serve our community.

“Wright 150 paved the way for new programs and initiatives that will benefit the Trust for years to come.”



Celeste Adams, President & CEO, speaks at the Art Institute of Chicago on June 8 in celebration of the 150th anniversary of Wright's birth.

REPORT OF THE PRESIDENT & CEO

In 1905 on his first trip to Japan, Frank Lloyd Wright began collecting Japanese prints – a lifelong passion that would provide additional income through sales to private collectors. **The Art Institute of Chicago** collection includes 300 Japanese prints originally owned by Frank Lloyd Wright that he sold to Clarence Buckingham, who subsequently donated them to the museum.

Trust members previewed an exhibition selected from these prints with organizing AIC curator Janice Katz and joined a packed audience in the museum’s historic Fullerton Auditorium for a lecture on *Wright and Japanese Design* by Kevin Nute, Professor of Architecture at University of Oregon, to mark the June 8 birth date. Wright’s association with the Art Institute included two exhibitions of Japanese prints, one in 1906 and another in 1908, when he began design of Robie House (1908-10), the culminating achievement of his Prairie Style.

Two of the pillar prints in the exhibition are among Wright’s first purchases and were included in the 1908 exhibition that he designed at the Art Institute. Replicas of these prints will be produced with permission of the Art Institute for display in Robie House on completion of the interior restoration.



The Art Institute of Chicago’s 1908 exhibition of Japanese prints designed by Wright. Red arrow indicates Kiyonaga print.

Photo: Collection of the Art Institute of Chicago

Isoda Koryusai. *Young Woman in Court Attire Receiving Letter from Kneeling Man* c. 1772. Clarence Buckingham Collection. Courtesy Art Institute of Chicago.

Torii Kiyonaga. *Courtesan Walking Under a Willow Tree on a Breezy Day* c. 1783. Clarence Buckingham Collection. Courtesy Art Institute of Chicago.

REPORT OF THE PRESIDENT & CEO





Hana Chang's prize-winning long coat, inspired by Robie House's aesthetic concept.

On stage at the Art Institute's Fullerton Hall, Mark Kelly, City of Chicago Commissioner of Cultural Affairs and Special Events, read the **Mayoral Proclamation** declaring June 8, 2017 as *Frank Lloyd Wright Day* in Chicago. A birthday celebration dinner at the University Club for audience members followed.

Festive neighborhood open houses at three Wright sites featured free evening tours, design activities, live music, refreshments and complimentary birthday cake. *Wright 150 in the Parks*, in partnership with the **Chicago Park District**, provided a weekend of innovative summer design camps for families with IIT architecture students and Trust educators on Midway Plaisance in Hyde Park. Participants were given free passes to Robie House.



Mark Kelly, Chicago's Commissioner of the Department of Cultural Affairs and Special Events.

The *Frank Lloyd Wright on Film* series in partnership with the **Chicago History Museum** presented two film screenings in the state-of-the-art Robert R. McCormick Theater. The films explored Wright's career in the Chicago area and the influence of Japanese aesthetics on his design vision.

The Trust's *Wright 150 Design Awards*, in partnership with the **School of the Art Institute of Chicago (SAIC)** Fashion Design Department, awarded jury prizes for the best student designs inspired by Robie House. Hana Chang took first prize for her long, colorful coat, reflecting the jewel-like character of Wright's masterpiece. Xinya (Teresa) Lin received second prize for her jacket dress inspired by the geometric windows of Robie House. Honorable Mentions were awarded to Maria Beniaris for a layered gown evoking Robie's interior surfaces and to Scarlet Li for her evening dress inspired by architectural plans. All winning student entries were displayed at the Jil Sander showroom on Oak Street at a cocktail reception and benefit event for the Trust.

REPORT OF THE PRESIDENT & CEO

Co-organized with the **Chicago Architecture Biennial**, *Thinking into the Future: Designing with Light* was the first symposium organized by the Trust in this 7-year lecture series. Held in the luminous Preston Bradley Hall at the Chicago Cultural Center, this keynote event provoked a stimulating conversation about innovative lighting in Wright's SC Johnson Building, in art museums today, and in the public arena. Featured speakers included architectural historian Mark Hertzberg, who has written extensively on Wright's Wisconsin projects, Kulapat Yantrasast, architect of numerous art museums and galleries, and French lighting designer Hervé Descottes, whose projects include public spaces, gardens, and the Eiffel Tower lighting project.

Members of the 350-person audience joined in the discussion as speakers compared Wright's lighting philosophy to contemporary lighting solutions and new environmental technologies.



The Preston Bradley Hall at Chicago's Cultural Center



Architect Kulapat Yantrasast



Lighting designer Hervé Descottes speaks to symposium guests.



A symposium guest asks the panel a question.

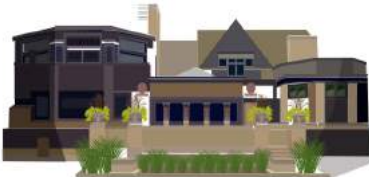
Photos: Mike Moenning

REPORT OF THE PRESIDENT & CEO

The **Prairie Style Passport** was a collaboration with other Wright Prairie-style public access buildings. Guests who visited three of the participating sites in 2017 received a complimentary tour for two of Wright’s Home and Studio, where Prairie Style was created. This regional initiative drew the Trust closer to Wright sites with a direct connection to Wright’s Oak Park Studio. **TravelWright 2017** offered Trust travelers Wright related cultural destinations in Japan, the United Kingdom, California, and New York City.

Held on Instagram, A *Celebrate Wright National Photo Contest* recognized and shared the best photo taken at one of our five sites each month during 2017. Winners received a complimentary tour for two at a Trust site of their choice.

Social media platforms grew from 2016 to 2017 with Facebook increasing from 40,000 to over 44,000; Twitter from 3,000 to over 3,600; Instagram from 3,600 to over 6,200; and Pinterest followers from 350 to over 600. Pinterest received over 10,000 views monthly.



Frank Lloyd Wright Home and Studio, 1898
Oak Park, Illinois



REPORT OF THE PRESIDENT & CEO

The sold out **2017 Wright Plus 150 Housewalk** embraced the immediate neighborhood, encircling Wright’s Studio in Oak Park, featuring 10 historic homes in an easily walkable loop. Four private Wright residences were included: the visionary Laura Gale House (1909), Wright’s spectacular Arthur B. Heurtley House (1902), his Japanese-influenced Hills DeCaro House (1906) and his remodeling of the Harrison P. Young House (1895). In celebration of the 150th anniversary of Wright’s birth, Trust Members received entrance to a bonus Wright home, the Thomas Gale House (1892) and enjoyed tours and refreshments.

Ultimate Plus guests participated in an extended weekend of festivities beginning with *Wright Night 150*, an elegant benefit that surpassed all previous years with its silent auction.

Thank you to our generous event sponsors: Robert Pasin and Muriel Quinn, Radio Flyer, Inc., Jones Day, Andersen Tax, Patty and Ken Hunt, Kelly and Michael Small, John Raffkin and Anita Levin, Don and Karen Rosenwinkel, Baker McKenzie, Heidrick & Struggles, KPMG, Leopardo Companies, David and Toni Dunning, Kurt and Mary Jane Neumann, Graham Rarity, McDermott Will & Emery, and US Bank.



Guests plan their day



Auction item at Wright Night 150



Wright Plus interpreter and guests



John Raffkin speaks at Wright Night 150

REPORT OF THE PRESIDENT & CEO



Sutra Library, Chion-in Temple, Kyoto C. 1905. Photographed by Frank Lloyd Wright.
Frank Lloyd Wright Trust Archive.



Frederick C. Robie House c. 1910. Frank Lloyd Wright Trust Archive.

Our TravelWright 2017 New York trip included a private tour of the Museum of Modern Art's exhibition, **Wright at 150: Unpacking the Archive**. The first major exhibition of MoMA's and Avery Library, Columbia University's joint acquisition of the Frank Lloyd Wright Foundation Archive five years ago, included Wright's drawings, letters, photographs, and films. Avery Library, New York City, now houses a comprehensive Wright archive open and available for research by future generations.

1905: Japan Through the Lens of Frank Lloyd Wright is the Trust's new online exhibition of Wright's personal 1905 photographs taken on his first trip to Japan. This treasure of the Trust's archive features 40 photographs and is available to a global audience for the first time. The interactive website WRIGHTSJAPAN1905.ORG includes a multi-disciplinary timeline and map tracing Wright's journey.

Teaching by Design, a new Trust website provides a series of free, quality, design-based resources and lesson plans for public, private, and home school educators. The program nurtures individual vision and creativity. Lessons are aligned with STEAM goals and emphasize cross-curricular themes. This expansion of the Trust's Professional Development Program for teachers across the country was made possible by a generous grant from the Terra Foundation for American Art. WWW.TEACHINGBYDESIGN.ORG.

REPORT OF THE PRESIDENT & CEO

The reopening of Unity Temple after an extensive two-year restoration, supported by Alphawood Foundation, and the return of our public tours was a centerpiece accomplishment during the past year. Guests were welcomed back to the greatest public building of Wright's Prairie period, now restored to its original 1908 appearance.

In December 2017, the Trust commenced its restoration of the Robie House interior. Public tours continue and visitors have an opportunity to observe the historic restoration in progress. The interior is being restored to Wright's original vision when the building was completed in 1910. Work includes plaster and coloration of walls and ceilings, woodwork and floor treatments, light fixtures and selected leaded glass windows and doors. Rooms being treated include the main entry hall and stairway; billiard room and children's playroom on the ground floor; and the living room, dining room and guest bedroom on the main floor. Completion is anticipated in early 2019.

We are deeply grateful for the support of our major donors to the Robie restoration: Alphawood Foundation, Walton Family Foundation, Hickory Foundation, Meijer Foundation, Tawani Foundation, Friends of Heritage Preservation, John and Jeanne Rowe, Richard and Mary Grey, Viñoly Family Foundation, and John Rafkin and Anita Levin.

The Trust's ongoing commitment to Frank Lloyd Wright's lasting legacy and the preservation of his historic sites was amplified by our dedicated Board of Directors, staff and volunteers, all of whom made Wright 150 a landmark year for the Trust and our surrounding community.



Celeste Adams,
President & CEO

REPORT OF THE PRESIDENT & CEO



Lighting, Unity Temple.



Leaded glass window, Robie House.



2017 Wright Night 150

Honorary Committee

(First row, L to R: Robert Pasin, Anita Levin, Toni Dunning, Kelly Small, Michael Small, Graham Rarity. Second row, L to R: Muriel Quinn, John M. Rafkin, David Dunning, Kurt Neumann, Mary Jane Neumann).

The evening with silent auction surpassed previous records.



Wright Night 150 co-chairs Michael and Kelly Small

Photos: Mike Moenning



Wright Night 150 silent auction

2017 WRIGHT NIGHT 150



Exterior, Hills DeCaro House



On Saturday, May 20, the Wright Plus 150 Architectural Housewalk featured a special lineup of homes in celebration of the 150th anniversary of Frank Lloyd Wright's birth. This sold out event featured four private Wright homes and five historically significant residences, all located within an easily walkable loop in Oak Park. Members received special access to a bonus Wright house and enjoyed refreshments for Wright's birthday.



Outside the Arthur B. Heurtley House



Wright Plus interpreter and guests.



Wright Plus 150 Housewalk guests

Photos: Anne Evans

2017 WRIGHT PLUS 150 HOUSEWALK

ADMINISTRATION

Celeste Adams	President & CEO
Rich Nichin	Director of Finance
Susan Harris*	Human Resources Manager
Kathleen Francis	Staff Accountant
Rebecca Girard	Administrative Coordinator & Central Office Manager
Jerome Bambara	Accounting Assistant

COMMUNICATIONS

Zarine Weil	Director of Communications
Andrea Brown	Senior Manager - Public Relations
Christine Trevino	Communications Coordinator
Sandy Ho*	Creative and Graphic Design Manager

DEVELOPMENT

Thomas Gull	Director of Development
Lise Braithwaite	Manager, Annual Giving and Events
JoEllen Narsutis*	Membership and Donor Database Coordinator
Alicia Boddy*	Grant Writer

COLLECTION AND PROGRAMS

David Bagnall	Curator and Director of Interpretation
Risa Sekiguchi Vuillemot*	Travel Manager

EDUCATION

Kim Scata	Senior Manager for Education
Marybeth Osowski	Outreach Educator
Kathryn Grindley	Home and Studio Educator

FACILITIES

Karen Sweeney	Preservation Architect and Facilities Administrator
Patrick Gronck	Caretaker
Michael Wait	Home and Studio Preservation Technician
John Geyer*	Preservation Technician
Omar Evans*	Home and Studio Housekeeper

INFORMATION AND TECHNOLOGY

Ahnquajj Kahmanne	Director of Information Systems Technology
Danny Yuen	Website Administrator
Karen Malone	IT Systems Assistant

GUEST RELATIONS

Christina Ruscitti	Director of Tour Operations and Guest Experience
Mark Campbell	Home and Studio Daily Operations Manager
Joseph Barrett	Robie House Daily Operations Manager
Linda Bonifas-Guzman	Volunteer Resources Manager
Angela Whitaker*	Wright Plus Coordinator
Daniela Blanco	Guest Relations Representative & Manager on Duty
Taylor Behary	Unity Temple Daily Operations Manager
Madeline Mason	Rookery Receptionist & Guest Relations Manager on Duty
Elizabeth Metcalfe	Guest Relations and Volunteer Coordinator
Claire Schnucker	Guest Relations Representative & Manager on Duty
Blair Williams	Guest Relations Representative & Manager on Duty
Rita Williams*	Guest Relations Representative
Carol Herbsttritt*	Guest Relations Representative
Brittany Yelinek	Manager, Home & Studio Shop
Travis Marshall	Manager, Robie & Rookery Shops
Diane Kittredge*	Museum Shop Sales Representative
Kristen Lopez*	Museum Shop Sales Representative
Randolph Mical*	Museum Shop Sales Representative
Sabrina Granados	Museum Shop Sales Representative
Catherine Jepson*	Museum Shop Sales Representative
Hannah Schnucker*	Museum Shop Sales Representative
Susie Trexler*	Museum Shop Sales Representative
Sam Scriba*	Museum Shop Sales Representative

MERCHANDISE AND DIRECT SALES

Heidi Farina	Director of Merchandise & Online Sales
Jason Gums	Merchandising Manager
Michelle Foland	Direct Sales Administrator
Steve Cothard	Merchandise & Fulfillment Coordinator
Katherine Bruun	Merchandise Customer Service Assistant
Richard Tomasello*	Shipping and Receiving Assistant

* part-time

STAFF

(AS OF DECEMBER 31, 2017)

FOR EDUCATORS

Bring Frank Lloyd Wright's uniquely American design legacy into your classroom.

Photograph by James Clapham



EDUCATION: TEACHERS AND FAMILIES

Throughout the year, the Frank Lloyd Wright Trust presents K-12 arts education programs for children and families at its historic sites, local schools, and other community spaces. The Trust provided programming for more than 6,000 participants in the Chicago metropolitan area, one of which was *Wright in the Parks*, interactive design workshops presented in partnership with the Chicago Park District.

Thanks to generous support from the Terra Foundation for American Art, the Trust's *Teaching by Design* professional development workshops for CPS teachers supported more than 2,400 CPS students, providing attendees with classroom sets of art supplies and resources. This program prompted the online extension of a website that provides design-based resources for teachers to use in activities with students.

2017 marked the 14th year in partnership with Oak Park School District 97, providing tours of the Home and Studio and Froebel workshops to all local fourth grade students.

2017 STUDENT INTERNSHIP PROGRAM

The Trust provides internship opportunities to students, graduates, and career-changers seeking to broaden their experience by working and learning in a professional museum environment.

EDUCATION

- Nikita Dulin University of Chicago – Home & Studio Internship
- Maya Paloma University of Chicago Laboratory Schools – Robie House Internship
- Sarah Polson University of Chicago Laboratory Schools – Robie House Internship

GUEST RELATIONS

- Samantha Aguilar Bachelor of Arts in History and a minor in Art History from Northeastern Illinois University, and a Master’s Degree in Art Education from the School of the Art Institute of Chicago
- Kirsten Kleman Bachelor of Arts in Art History with a Studio Art minor from North Central College
- Jessica Hill Bachelor of Fine Arts from Missouri Western State University
- Lilie Pudnos Bachelor of Arts in History and Classical Studies from The College of Wooster



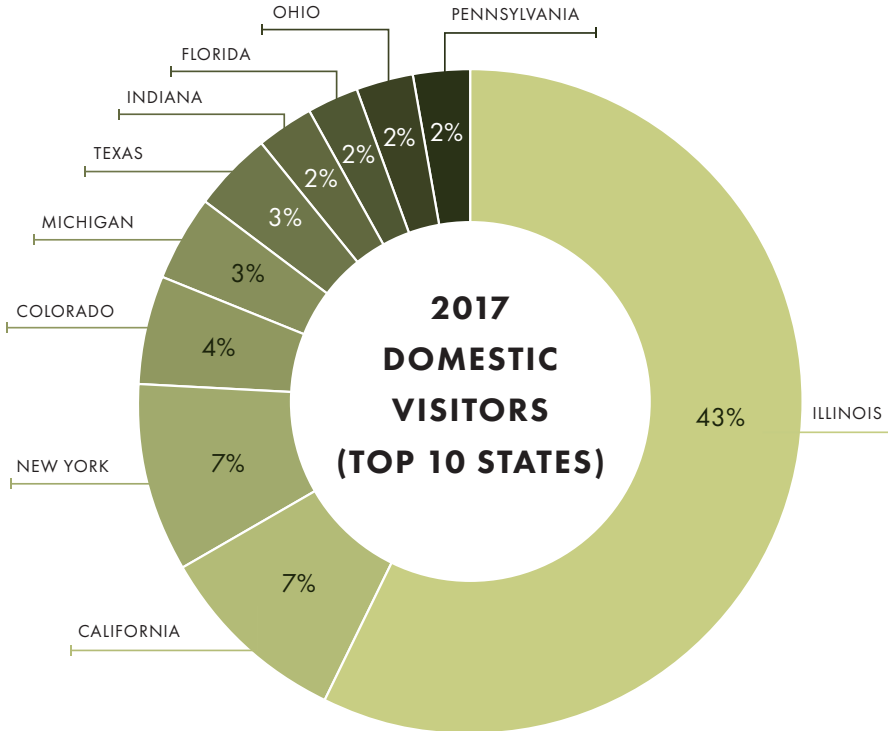
Intern Nikita Dulin helps a student



Interns Maya Paloma and Sara Polson

INTERNSHIP PROGRAM

As the "gateway to Frank Lloyd Wright in Chicago," the Trust welcomed more than 152,000 visitors in 2017.



VISITOR INFORMATION

During the grant period, the Frank Lloyd Wright Trust partnered with forty-one organizations. Partnership types include audience outreach, marketing and promotions, K-12 education, tour programs, tourism promotions, community engagement, and special events. 2017 Trust partners are listed below.

57th Street Art Fair
American Institute of Architects-Chicago
Art Institute of Chicago
At Home in Chicago, Association of Chicago House Museums
Blue Star Museums
Chicago Architecture Biennial
Chicago Architecture Foundation
Chicago Cultural Accessibility Consortium
Chicago Flower and Garden Show
Chicago History Museum
Chicago Public Schools
Choose Chicago
Dana-Thomas House Foundation
Downtown Oak Park
Driehaus Museum
Elmhurst History Museum
Frank Lloyd Wright Building Conservancy
Forest Preserve District of Kane County
Glessner House
Greenline Wheels
Illinois Arts Council Agency

Museum Campus South
National Education Association (NAEA)
Oak Park Education Foundation
Oak Park Elementary School District 97
Oak Park River Forest Infant Welfare Society
SC Johnson
School of the Art Institute of Chicago (SAIC)
Seminary Co-Op Bookstore
Tawani Enterprises, Inc.
Terra Foundation for American Art
The Laurent House Foundation
Unity Temple Restoration Foundation
Unity Temple Unitarian Universalist Congregation
University of Chicago
University of Chicago Laboratory Schools
University of Chicago Oriental Institute
Village of Oak Park
Visit Oak Park
Wright in Kankakee
Wright in Wisconsin



IN PARTNERSHIP WITH THE COMMUNITY

FOUNDATIONS

In 2017, the Trust received charitable support for historic preservation and restoration projects, education programs for children and teachers, lectures and public programs, community outreach, and general operations from the below-listed foundations.

Alphawood Foundation
Agape Foundation
Anonymous Fund of The Greater Cincinnati Foundation
Brinson Foundation
Good Heart Work Smart Foundation
Harper Court Arts Council
Hickory Foundation
Illinois Arts Council Agency
Jacqueline Goddard Summit League
Laurent House Foundation
MacArthur Foundation
The Meijer Foundation
Oak Park Area Arts Council
Summerfield Foundation
Tawani Foundation
US Bank
Viñoly Family Foundation
Wallis Austin & Virginia Bennett Austin Charitable Fund
Walton Family Foundation
Susan & Robert Wislow Charitable Foundation

BUSINESS PARTNERS

Business Partners supported Trust operations through event sponsorships and charitable contributions of \$1,000 or more in 2017.

@properties
Albion Residential
Andersen Tax
ARUP
Baird & Warner
Baker & McKenzie
Blue Cross Blue Shield of Illinois
Bulley & Andrews
Chicago Office Technology Group
Commonwealth Edison Company
Community Bank of Oak Park and River Forest
Downtown Oak Park
The Emerson
Greenplan Management
Heidrick & Struggles
Heritage Tile
House Painter Media
Jones Day
KPMG
Leopardo
McDermott Will & Emery
Perkins Coie Foundation
Solomon Cordwell Buenz

US Bank
Vantage Oak Park
Visit Oak Park
West Studio Inc.
WestRock

BUSINESS SUPPORT

Additional business support up to \$999.

Bonanza Productions
Cozy Corner Restaurant
Cucina Paradiso
Gagliardo Realty Associates
Giordano's of Oak Park
Hemingway's Bistro
Il Vicolo Trattoria
The Little Gem Café
Mickey's Gyros
Oak Park Brewing Company
Oak Park Cycle Club Invitational
Onward Luxury Group
Winberie's Restaurant and Bar
The Women's Group of Northwestern

MATCHING GIFTS

Allstate Insurance
Amazon Smile
Ameriprise Financial
Apple
Charles Schwab Foundation
GE Foundation
HD Smith Foundation
HDR
Heidrick & Struggles
Home Depot
Illinois Tool Works Foundation
Nordstrom
Partners and Napier
The Progressive Insurance Foundation



Photo: Amanda Kowalski

FOUNDATION AND BUSINESS CONTRIBUTORS

The Frank Lloyd Wright Trust recognizes with gratitude the generous support of the following individuals from January 1, 2017 through December 31, 2017.

INDIVIDUAL SUPPORT

\$25,000+

Patricia and T. Kendall Hunt
Muriel Quinn and Robert Pasin
Karen and Don Rosenwinkel
John W. and Jeanne M. Rowe

\$10,000—\$24,999

Nancy and Alan Berry
John and Susan Major
Kelly and Michael Small

\$5,000—\$9,999

John Buck
John M. Rafkin and Anita Levin
Estate of Sue A. Rotharmel

\$2,500—\$4,999

Celeste M. Adams
David and Toni Dunning
William Kundert and Judith Davenport
Mr. and Mrs. Paul Laughlin
Carol R. McGee
Mr. Loren Rogers
Mr. and Mrs. Jeff Tomski

\$1,000—\$2,499

Kim and David Adler
Patrick and Jeanette Cannon

Rebecca and Timothy Doar
Michele and John Donley
Ms. Debra Floyd
Gabriela Freese
Peter R. George
James and Judy Graves
Michael and Nichole Linhardt
Gary and Kim McCullough
Diane McGrath
Mary and Bruce McLeod
Robert Miller and Amy Renzulli
James and Mary Nelson
Mr. and Mrs. Kurt Neumann
Mr. John Pintozzi
Graham J. Rarity
Mr. George Sargent
Mr. and Mrs. Benjamin Sax
Mrs. Julie Schauer
Thomas Swanson
Randall S. Thorne
Mr. and Mrs. David Wagner
Peter Yankala and Donna Lamm

\$500—\$999

Thomas and Deborah Abrahamson
Anonymous
Ms. Catherine Boshier

Mr. William C. Brauneis
Linton J. Childs
Bob Ciano
Mr. Jerry Critser
Mrs. Kelly Davis
Dr. and Mrs. Eugene DeSombre
Carla and Leonard Feinkind
Jim and Patty Jurgens
Rick and Ellen Kuner
Mr. and Mrs. Richard Nichin
Norman and Helene P. Raidl
Mr. Peter Ruggiero
Mrs. Melissa Rutland
Jon J. Skillman and Luanne E. Selk
Sallie and Mark Smylie
Karen Sweeney and William P. Janulis
Mr. and Mrs. Thomas Thorpe
Risa and Kirk Vuillemot
Debra N. Walters
Mr. Craig Zimmerman

\$250—\$499

Anonymous
Mr. and Mr. Kent Bartram
Barbara Brown
Adele Cannell and Michael Warnock
G. J. Coatsworth

DONOR CIRCLE

These donors contributed cash gifts of \$2,500 or above in 2017.

Celeste M. Adams
Nancy and Alan Berry
John Buck
William Kundert and Judith Davenport
David and Toni Dunning
Patricia and T. Kendall Hunt
Mr. and Mrs. Paul Laughlin
John and Susan Major
Carol R. McGee
Muriel Quinn and Robert Pasin
John M. Rafkin and Anita Levin
Mr. Loren Rogers
Karen and Don Rosenwinkel
John W. and Jeanne M. Rowe
Kelly and Michael Small
Mr. and Mrs. Jeff Tomski



Tom Gull, Director of Development

DONORS

Individual Support – Continued

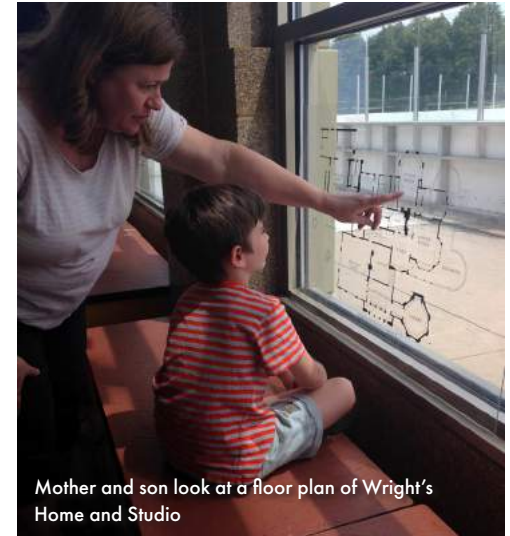
Casey G. DeSalvo
Ms. Mary C. Galligan
Ms. Ellen Gorney
Julie A. Bauer and Paul D. Greenberg
Tim Flesch and Tom Gull
Jack and Mary Ellen Lesniak
John and Nell Lurain
Stewart Macaulay
Daniel Madden and Tuny Mokrauer
Susan and Charles Maltese
James and Carolyn McClure
Mr. William F. McDonald
Cynthia Mungerson
Ms. Robin Neiterman
Alan Nesburg and Kathryn Sheehan Nesburg
Joseph Nordsieck and Melanie Ringer
Don M. Randel and Carol E. Randel Fund
Deborah Rogers Design, Inc.
Timothy E. and Debra A. Shamble
Yvonne N. Smith
Craig Sokol
Clifford C. and Virginia G. Sorensen Charitable Trust of The Saint Paul Foundation
Ms. Lois Starbuck
Laura and Richard Talaske
John Vinci
Pete VonDerLinn

\$100—\$249

Dr. Anne Agee and Mr. Robert Dixon
Mr. and Mrs. Andrew Allen
Thane K. Arnold
Dwight D. Austin
Cherie Balan and Jeffrey Kraus
Ballor Family Charitable Account
Dr. and Mrs. James E. Banta
Debbie Becker
Lee N. Betterman
Mr. Robert Biegler
Ms. Linda Bierig
Sue and Jeff Blaine
Margaret Brennan
Ms. Katherine K. Brown
Elizabeth and Stephen Bruner
Jean Buckley and Dennis Michon
Fergus and Michelle Bushe
Barbara J. Byrum
Mr. Howard C. Cavner
Mrs. Lois Chamblee
Mr. David Clark
Dr. and Mrs. David Connito
Mr. and Mrs. Michael P. Cullinane
Rev. and Mrs. Stanley L. Davis
Ms. Leah Day
Pamela and Patrick Deady
Valerie and William DePriest
John E. Dieter
Mr. and Mrs. John Dzuryak



Linda Bonifas-Guzman, Volunteer Resources Manager.
Photo: Amanda Kowalski



Mother and son look at a floor plan of Wright's Home and Studio



Kids participate in a pop-up design studio at Wright's Home and Studio

Individual Support – Continued

Mr. Daniel Johnson and Mr. Thomas Elkas
David Fanta
Sharon T. Flint
Brian Flora
Mrs. Kim Floyd
Thomas Fontana and Sagan Lewis
Jay and Karen Fritz
James Gallagher
John and Gloria Garofalo
Leigh Gates
Mr. James J. Gettel
Steven Gradisnik
Mr. and Mrs. Tim Grimms
Roy J. Guenther
George S. Hallenbeck
Jo N. Hays
Mr. and Mrs. Frank Heitzman
Miss Kelly Hinds
Ms. Sharon Hoisington
Patricia and Case Hoogendoorn
Mr. Alan D. Isaacson
Mr. Stephen Jaskowiak
Barbro and Norman Jung
Jeanette L. Kampen
Ms. Yvonne Katerman
Mr. Erik P. Kolz
Dr. and Mrs. Daniel J. Koretz
Ms. and Mr. Karen A. Kozlowski
Thomas and Elizabeth Kubiak
Mr. Richard M. Lazarski
Don Leatherman

Mr. and Mrs. John G. Levi
Ms. Meredith Lewin
Darcy Lewis and Daniel Wang
Ed and Luci Lugowski
Mary Ann Luther
Mr. and Mrs. Mike Mackinnon
Gloria Manelis and Marie Manelis-Mack
Mrs. Maya Manny
Mr. Scott Manzler
Jacqueline McMillan
Mr. Dato' Ar. Zulkhairi Md Zain
Mr. Bob Mellor
Mrs. Anne Metz
Joan Miceli-Leslie and Dennis Leslie
Carolyn M. Mulac
Luigi H. Mumford
Roselen Murphy
Dr. Raymond Neutra
Paul and Barbara Oppenheim
Gregory Padgett and Marie Castaneda
Mrs. Suzanne Poeschel
Mike Poirier
Frank Pond
Mr. and Mrs. Daniel Popp
Marc Martinez and Susan Price
Lee and Lori Rafkin
Madeleine Raymond
Ms. Susan Remington
Terry and Jerald Rosenthal Philanthropic Fund
Mr. Jon Ruff
Linda S. Ryan

Robert Rzepka and Gabrielle Ryan
Jill Sanford
Paula J. Santrach
Ms. Ana Schedler
Jeff and Linda Schroeder
Dawn F. and George R. Schumann
Mark S. Scott
John Severns
Traci Shogren-Knaak
John and Marsha Shyer
John and Lacey Sikora
Mr. Paul Simadas
Michael J. Siska
Dr. and Mrs. Brent Smith
Judy Staicer
Ms. Heather Steans
Mrs. Jody Stokes
Mr. Newton TerMeer
Richard Utterback
Nancy Waichler
Mark Wavering and Kathleen Viskocil
Ken Wavering
Ms. Dena M. Weisbard
Ms. Sandra S. White
Mr. Ben Wightman
Carolyn Williams
Carl D. Winberg MD
Mr. and Mrs. Royce A. Yeater
Mr. Jay Zukerman



Xinyi (Teresa) Lin's jacket dress on display at the Jil Sander showroom.



SAIC students discuss their sketches for the Wright 150 Fashion Design Awards.

IN HONOR/MEMORY

Gifts In Honor

In honor of Jerry Rosenthal's service
at the Frank Lloyd Wright Home & Studio

In Honor of John Rafkin's service

In Honor of Rich and Kathy Nichin

In Honor of Risa Sekiguchi

Terry and Jerald Rosenthal Philanthropic Fund

Lee and Lori Rafkin

Agape Foundation

Marcia D. Bansley

Gifts In Memory

In Memory of Gerald Mungerson

In Memory of June Noonan

In Memory of Robert L. Byrum

In Honor of Daniel Madden

Cynthia Mungerson

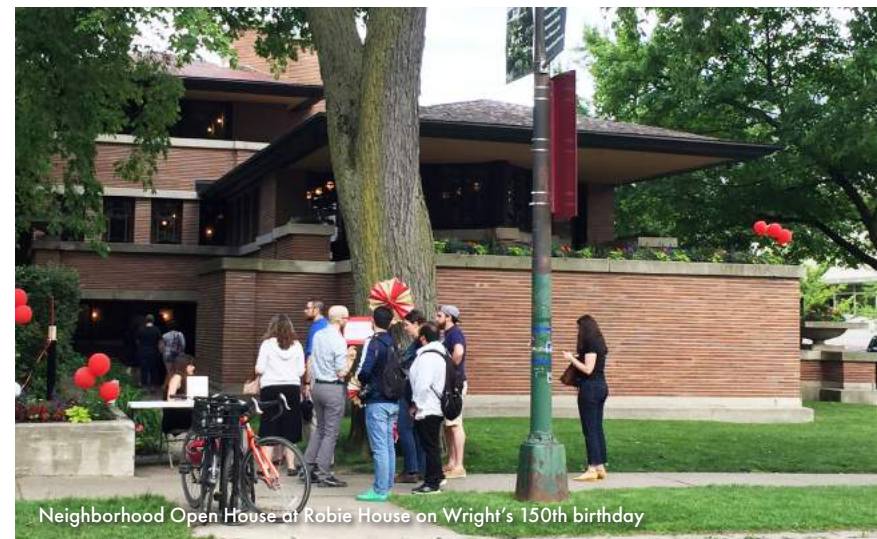
Cindy Milojevic

Barbara J. Byrum

Adrienne Gulden



Sanctuary, Unity Temple



Neighborhood Open House at Robie House on Wright's 150th birthday

The Trust's members enjoy unlimited access to a world of ideas, travel and historic sites as well as special discounts on programs and merchandise. Members make a difference. Current Society Level members:

Skylight Society

Mr. Tom Alexander
Mr. Kenneth Bagan
Mr. and Mrs. Keith Clayton
Howard Cohen and Dona Robbins-Cohen
Mr. and Mrs. Robert Feeney
Alex Gibson and Mary Hendrickson
Ms. Vicki Giles
Mr. and Ms. Thomas Glennan
Mr. Daniel Grangaard
Mr. and Mrs. James A. Graves
Mr. and Mrs. Bill Greffin
Mr. Richard L. Hess
Mr. Loren D. Kaiser
Dr. and Mrs. Paul Lyons
Craig and Roberta MacGlashan
Susan and John Major
Mr. and Mrs. Terry Marbach
Mr. James W. Neupert
Ms. Julie Overbeck
Barbara Quilty and Matthew Magnifico
Mr. Loren M. Rogers
Mr. Thomas R. Schiff
Mr. and Mrs. Joel Schoenmeyer
Mr. James Smith

Drs. Kenneth and Nan Unklesbay

Ms. Debra N. Walters
Mr. and Mrs. Thomas D. Whittington
Mr. Craig Zimmerman

Inglenook Society

Dr. Alvin Bronstein
Mr. and Mrs. Bill Christensen
Mr. and Mrs. Douglas M. Collins
Ms. Debra Floyd
Ted and Deborah Giesler
Mr. and Mrs. Richard Gray
James Hayes and Catherine Keig
Mr. and Mrs. H M. Jensen, III
Mr. Stewart Macaulay
Dr. and Mrs. Ryan Mayhew
Mr. and Mrs. Gary McCullough
Joseph Nordsieck and Melanie Ringer
Mr. and Mrs. John K. Notz Jr.
Mr. and Mrs. Jeffrey Petertil
Mr. J. Sean Plater
Mr. and Mrs. Hugh Reardon
Ms. Patricia S. Schwartz
Mr. Jack Waters

Octagon Society

Anne Agee and Robert Dixon
Ms. Nancy Alpert
Mr. and Mrs. Chris Baumann
Mr. Fred Bauries
Ms. Lieselotte N. Betterman
Mr. and Mrs. Mark Brandyberry
Marilyn Cantisano and Donald Southworth
Ann and Kevin Casey
Mr. and Mrs. Douglas Cole
Mr. and Mrs. Terrance J. Coleman
David Coup and David Smith
Mr. Robert R. Dahl
Dr. and Mrs. Paul J. Davis
Mr. Dave DeCaro
Dr. and Mrs. Eugene DeSombre
Mr. Eric Dietz
Mr. James G. Dill Jr.
Mr. and Mrs. John Donley
Bill Donnell and Claudia Daly
Mr. Dale Eaman
M. Fainer
Mrs. Kim Floyd
John Patrick Garrett
Mr. and Mrs. Richard H. Geary Jr.

Mr. and Mrs. Jeffrey C. Grip
Mr. and Mrs. Robert Guritz
Mr. T. Gunny Harboe
Mr. and Mrs. William Hopson
Mr. and Mrs. James B. Jurgens
Ms. MarLen Kaiser
Sona Kalousdian and Ira D. Lawrence
Ms. Ann M. Krilcich
Nell and John Lurain
Marvin Mitchell and Neale Godfrey
Mr. Jerrold Mohn
Mr. and Mrs. Scott Moller
Mr. William B. Neis
Rhonda and Samantha Pearlman
Mr. and Mrs. David Perry
Mr. and Mrs. Dominic Pisani
Karen Prince-Weithorn
Mr. Dan Ryan
Scott E. Schiave and Anne Hamblin Schiave
Daniel Curry and Jennifer Schmidt
Mr. David T. Sidney
Mr. Anthony M. Smyth
Mr. and Mrs. Timothy Snell
Mr. and Mrs. Ron Spengler
Mr. and Mrs. Mark Stampfl

SOCIETY LEVEL MEMBERS

Octagon Society – Continued

Mr. Christopher V. Stevenson
Christopher Straus and Curtiss Cohen
Mr. and Ms. Robert Thomas
Ms. Marcia Thomas
Mr. and Mrs. Thomas Thorpe
Mr. and Mrs. Michael J. Trimbach
Mr. and Mrs. Henry A. Vande Kieft
T Snow Wolf Wagner and David Klein
Mr. Steven Young

Prairie Society

Mr. and Ms. Joshua Abrams
Dr. and Mrs. Thomas Acton
Janice L. Miller and David A. Acton
Mr. and Mrs. Mark Adams
Mr. and Mrs. Thomas Adams
Nancy Adkins and Brant Abrahamson
Eric and Catherine Allen
Mr. and Mrs. Ken Allen
Frank Lloyd Wright's Allen House
Moana and Erik Andersen
Mary Andrus and Tim Lynch
Mr. Thane K. Arnold
Ms. Morgan G. Aronson
Mr. and Mrs. Thomas Auguste
Mrs. Marcie Austen
Ms. Carol Austin
Debera Backhus and Anna Boyle
Carla Bailey and Michael Duncan
Mr. Roger Baker

William Baker and Anthony Stull
Dr. and Mrs. James E. Banta
Richard Barker and Scott Renn
Mr. Earl Barnes
Carolee and Brooks Barrett
Mr. and Mrs. John Barton
Luke Basic and Sarah Kimmel
Alan Batteiger and Paula Mann
Mr. and Mrs. Thomas Batterham
Ms. Andrea Bauer
Mr. and Mrs. Terry Baxter
Mr. John Beddoe
Mr. and Mrs. James Bedi
Mr. and Mrs. Roger Behler
Vicki and James Bell
Mr. A. Stuart Bennett
Ms. Christina Berben
Mr. and Mrs. Dale Berns
Dr. Robert Beverly III
John Biek and Christina Norton
Mrs. Sharon Bigot
Laura and John Bilson
Mr. and Mrs. Norman Bishop
Mr. and Mrs. Alex Blair
Mr. and Mrs. Fred Blake
Mr. and Mrs. Karl Blanchard
Barbara Bayldon and Joel Block
Mr. and Mrs. Jay Boardway
Mort and Jennifer Boland
Mr. George V. Bowen

Heidi Bowlus and Rachel Bowlus
Mr. and Mrs. Ralph Bowman
Mr. and Mrs. Joe Brackett
Ms. Susan Branch
Mr. and Mrs. William Brander
Mr. Lawrence E. Bray
Mr. David Brent
John and Marcie Britton
Ian Brown and Barb Parish
Layne and Rebecca Brown
Mr. S.T. Brown
Mr. and Mrs. Gary Bruck
Todd and Cathie Buch
Mr. and Mrs. Shad Burkiert
Miss and Mr. Brooklyn Burmeister
Mr. and Mrs. Eugene H. Byers
Ms. Barbara J. Byrum
Amr Abdelaziz and John Calcagno
Ms. Jocelyne Caldwell
Mr. and Mrs. Howard Cantor
Ms. Vera Capp
Ms. Susan Cardoni
Carleton of Oak Park
Anne and Bryce Carmine
Sandi and Corwin Carr
Mr. and Mrs. Angelo Catalano
Drew W. Cates and John H. Fix
Mr. and Mrs. Jeff Cauffman
Mr. Howard C. Cavner
Mr. and Mrs. David S. Cecchini

Lisa and Richard Cederoth
John and Jaqueline Ceisel
Mr. and Mrs. Cande Celio
Jack Cella and Laura Prail
Mary Chamberlin and Ray Watson
Mr. Emile Charest
Ms. Monique Chase
Mr. Linton J. Childs
Mr. and Mrs. Jim Choate
Mr. and Mrs. Robert Christensen
Nancy and Brian Christensen
Mr. and Mrs. Roger Christy
Mr. and Mrs. Edward A. Chuhna
Pam Church and Fred Popp
Gloria and Katherine Cichy
Mr. and Mrs. Vincent Clary
Ms. Michelle Clemons
Mr. and Mrs. Michael Coleman II
Ms. Patricia J Coleman
Mr. Stephen Joel Coons
Mr. and Mrs. G. Rogers Cooper
Mr. and Mrs. Mark Costello
Mr. Steven W. Cox
Mr. and Mrs. Andrew Craven
Dr. Martyn Crook
Mr. Arthur Crook
Mr. Charles Crowder
Ms. Ellen Darling
Dr. and Mrs. Tapas Das Gupta
Ms. Barbara C. Davis



Prairie Society – Continued

David G. De Marco
Mr. and Mrs. Michael Dedek
Mr. Thomas Deimel
Richard and Patricia DeiTos
Ms. Eunice M. DeMello
Ms. Martine Derom
Huimin Diao and Yu Fu
Mr. Matthew Dickey
Mr. John E. Dieter III
Mr. Vernon Dietz
Mr. Eugene H. Diggs
Mr. and Mrs. Howard Dittmer
Mr. and Mrs. Steven Dixon
Mr. and Mrs. John V. Donofrio
Mr. Dennis P. Doordan
Mr. and Mrs. Jon Doucleff
Mr. and Mrs. Norman W. Douglas
Chris and Carol Dubrowski
Robert Duffin and Dee-Dee Darby Duffin
Mr. Daniel Duncan
Ms. Mary M. Dunea
Ms. Theresa Duphare
Mr. and Ms. Andy Ebbott
Mr. Gregory Eisenstadt
Douglas and Michelle Eldredge
Mr. Howard Ellington
Derek Emery and Blanca Eguia
Mr. Chuck Emick
Dr. Moshe Engel
Nilo Erice and Tim Schumacher

Ms. Irene Erwin
Dr. David Estes
Debbie Etri
Susan Pentzer Eubinag & Glenn Eubinag
Hazel S. Fackler
Connie Fairbanks and Kirk Twiss
Laura Farnsworth Chelsen and Caitlyn Chelsen
Mr. David Faurio
Anna May and Timothy Feige
Andrew Feldman and Brett Jacobs
Ms. Virginia Ferrante-Iqbal
Mr. and Mrs. Diego Ferro
Mr. and Mrs. William J. Ferry
Mr. and Mrs. Lynn Finley
Ms. Cynthia D. Fitzharris
Patti and Dennis Fleming
Fred Flintstone
Mrs. Lynda P. Fogle
Thomas Fontana and Sagan Lewis
Mr. and Mrs. Tim Foster
Edward and Lynne Francis
Ms. Martha Franklin
Ms. Kathryn Freidel
Dr. William French
Ms. Caitlin Fry
Ms. Barbara N. Fuldner
Mr. and Mrs. Sandford Furman
Renata Gasperi
Ms. Gaston and Mrs. Keebler
Mr. and Mrs. Jim Irwin

George Geary and Neil Bonner
Ms. Lori Gentile
Andrea Georgelos and Nathan Gardner
Mr. Noah Gerding
Mr. and Mrs. David Gill
Mr. Donald Goerig
Barry Gomberg and Alice Kuhn
Marc Gordon and Glenna Lally
Lisal and Don Gorman
Rose and Matthew Graca
Mr. Jason Greenberg
Mr. Mark Grenier
Sara Griffiths and Thomas Connell
Mr. Duane Griffus
Mr. Stephen Groh
Mr. and Mrs. Jeffrey Grohne
Cynthia Gronkiewicz and Mark Tomera
Mr. Alan Grossman
Anne and Daniel Groves
Dr. and Mrs. Fred Guenther
Mr. Steven P. Guild
David Guth and Michael McDeid
Mr. and Mrs. Timothy Hagen
Nicole and Doug Hall
Mr. and Mrs. Marcelo Halpern
Dr. and Mrs. David Hancock
Patricia Hanson and Susan Hertzfeldt
Margaret Harris and Phil Straus
Susan M. Harsha



Photo: Mike Moenning

Detail on second place winner Xinyi Lin's jacket dress.

Mr. and Mrs. James R. Hartland
Sandra and Kevin Hartman
Mr. and Ms. Thomas Harvey
Michael Hayes and Jeanne Cloughley
Suzanne and Emil Heintzinger
Ms. Maria Helm
Mr. and Mrs. Jason Hennes
Donna Heroux-Everson and Ray Everson
Mr. Rob Herrema
Mr. and Mrs. Bruce Hildabrand
Anthony and Melissa Hiller
Walter Ho and Vanessa Morales Ho
Mr. and Mrs. Craig Hodson
Megan Holborn and Micheal Owen
Mr. Stephen Hollander
Kim Holmes and Tim Kaczocha
Mr. and Mrs. Bill L. Holmes
Mr. and Mrs. Phil Howard

Prairie Society – Continued

James Howe and Carol Kamm
Elizabeth Howland and Dennis Zavac
Lucianne and Lon Hudak
Jessica Huerta and Effren Gutierrez
Kurt and Maria Hull
Mr. and Mrs. Michael Huskisson
Linda and Scott Hutchins
Mr. and Mrs. Randy Hytjan
Russell Irving and Margaret Linnartz
Mr. Alan D. Isaacson
Carl and Diane Iseman
Carol Jabs and Alfred Schectman
Amy and Carl Jackson
Coreen and Ron James
Marie and Mike James
Ms. Karin Janik
Mr. Stephen Jaskowiak
Mike Jaynes and Donna Jaynes-Hoffman
Emily and Dave Johnson
Mr. and Mrs. Willis Johnson
Mr. Michael Johnson
Tonya and Dwayne Johnson
Mr. Kelly Jones
Laura and Eric Jordahl
Mr. and Mrs. Michael Jorgensen
John Judd and Karen Olesen
Mr. and Mrs. Norman O. Jung
Mr. and Mrs. Fred Kamps
Richard and Joseph Kania

Marilyn Kapaun and Steve Kapaun
Jared Kaplan and Maridee Quanbeck
Ms. Yvonne Katerman
Mr. Richard Kato
Maire and Vic Katyal
Michael and Sharon Kearney
Mr. John T. Keefe
Mr. and Mrs. Thomas Keefer
Marlin and Jeanne Keesler
Mr. David J. Kelly
Ms. Kathleen Kendra
Mr. and Mrs. James Kenton
Ginge and Gerry Kettenbach
Dr. Katherine Kientzle
Mr. Thomas Kilcoyne
Mark Killian and Tina Kuska
Mr. Walter Killingsworth
Mr. and Mrs. Robert L. Kinney
Mr. and Mrs. James Knoedler
Mr. Michael Koch
Elizabeth and Kent Kochheiser
Mr. and Mrs. Jim Koczot
Brian Koenigberg and Lisa Watson
Ms. Susan Kogan
Dr. and Mrs. Daniel J. Koretz
Kimberly Brown and Robert Koutek
Daniel and Christa Krout
John Krzykoski and Michael McCreight
Christine M. LaGana and Joseph Raist

Mr. Amir Lagstein
Mr. and Mrs. Lou LaGuardia
Mr. and Mrs. R.D. Lammy
Mr. and Mrs. Mike Lampkowski
Ms. Marion Lang
Mr. and Mrs. David Latz
Laurent House Foundation
Ms. Jean Lawrence
Elaine and Thomas Layden
Maureen and David Leach
Mr. Don B. Leatherman
Dr. and Mrs. Andrew Lee
Mr. and Mrs. Richard Leishman
Elizabeth Lesnick and Jonathan Gross
Mr. Monte J. Levinson
Ms. Xin Yi Lim
Robert Lindstrom and Kathy Ehrig
Mr. and Mrs. William Lipinski
Robert Lippert and Kathleen Dwyer
Dr. and Mrs. Lou Lombardi
Mr. David Lucas
Mrs. Laura Ludwig
Mark Magnuson and Steven Westfield
Mr. and Mrs. Kevin H. Mahoney
Mr. Robert J. Mahoney
Vera V. Mainz and Gregory Girolami
Mr. and Mrs. Earl Major
Mr. and Mrs. William Malcomb
Mr. Drew Maloney

Gloria Manelis and Marie Manelis-Mack
Mr. Theodore J. Manzke
Timothy Markham and Melissa Kelly
Mr. and Mrs. Scott A. Martin
Carlos J Martinez and Patricia Lechowicz
Johanthan and Mary Mason
Ms. Jennifer Masterson
Ms. Nina Mattarella
Mr. and Mrs. Nathan Maune
Stephanie May and Kirk Lamb
Julie McClellan and Brittany Beckwith
Elise McCurley and Elizabeth Davis
Ms. Tracey McDonald
Mr. and Mrs. Brad McGee
Michelle and Byron McKinney
Mr. and Mrs. Bruce McNulty
Mr. Matt McQnown
Mr. Dato' Ar. Zulkhairi Md Zain
Mrs. Anne Metz
Kelly and Tom Meyer
Mr. George I. Meyer
Ms. Elizabeth P. Meyer
Mr. John Michael
Mr. and Mrs. George Miller
Ms. Faith Miller
Dr. Eric Milliner
Ms. and Mr. Lynn Mische
Jeff Mishur and Janet Ray
Mr. and Mrs. James Mitchell



Prairie Society – Continued

Victoria and Rebekah Mogilevsky
Carla and Richard Moore
Mr. and Mrs. Leon Moore
Mr. Eric Moore
Mr. James Moore
Ms. Anna Morrow
Marcia Mueller and Charles Prorok
Peter Muha and Michael Lynch
Mr. and Mrs. Robert F. Mulka
Francis Murray and Katherine Brenner
Leonard Muscolino and Duane Althoff
Mrs. Elaine A. Nap
Rachael and Gabriel Nass
Ms. Liliana Nazario
Mr. and Mrs. Gregory Neblock
Lisa and Paul Newkirk
Mr. and Mrs. Richard Nichin
Michael and Susan Nielsen
Clayton Nightingale and Demetra Smith
Nightingale
Mr. and Mrs. Brad Nogar
Mr. William Northrup
Gayle Novig and Terry Mahn
Bob Nuber and Betty Shanahan
Ms. Jan O'Connor
Mr. and Mrs. Keith L. Olson
David and Bradley Olufs
Dr. John Ortega and Ms. Maila Merced
Mr. and Mrs. Gerald A. Ostermann

Mr. Mark Osterstock
Mr. and Mrs. Richard Ouwenga
Ami Owen and Mark Owen
Eva Pajkrt and Jacobus Bakker
Mr. and Mrs. John G. Palko AIA
Mr. Paul A. Papier
Drs. Allen and Georga Parchem
Mr. Brennan Pardee
Mr. Rohan Paul
S. J Perlow and Sandra Allen
Mr. and Mrs. Martin E. Petroviak
Mr. and Mrs. Michael J. Phend
Amy Phillips and Judith Denicola
Louis Piccoli and Karen Kozlowski
Mr. and Mrs. Louis Pignotti
Linsey Pilkinton and Tracey Pilkinton
Mr. and Mrs. Douglas L. Pinney
Mr. Michael Pipher
Wilma Plazak and Carey William Plazak
Mr. and Mrs. Daniel Popp
Mr. and Mrs. Tom Pounds
Ms. Glenna S. Powell
Mr. and Mrs. Mark T. Prendeville
Mr. and Mrs. Frank Pride
Mr. Gary Priestap
Mr. Steven Pulmood
Ken Qualls and Linda Lantry
Kanchan and Peter Quinlan
Mr. and Ms. Douglas Radick

Mr. and Mrs. Jaime Ramirez
Mr. Scott Rand
Mr. and Mrs. Greg Rechtsteiner
Lynn and Ian Reede
Harold Rees and Emily Culbertson
Karen Richter
Milton Rivera
Mr. and Mrs. Larry Robbins
Mr. and Mrs. R. Michael Robinson
Mr. Milton J. Robinson
Ms. Maria T. Roche
Angelyn and Justin Rockenbaugh
Mr. Ed Rogan
Ms. Deborah Rogers
Brian and Mary Gail Rohr
Mr. and Mrs. Gerald A. Role
Mr. and Mrs. Darryl Rose
Mr. Jerald Rosenthal
Ms. Jo Ann Ross
Mr. and Mrs. John Rottersman
Mr. Marshall Rousseau
Ms. Patricia Rowland
Stephen Roy and Lloyd Kohler
John Royster and Katie Blesener
William Roznowski and Christine Laperuto
Ms. Cynthia Rudmann
Ms. Mary Jane Russell
Mr. and Mrs. James W. Ryan
Robert Rzepka and Gabrielle Ryan

Kurt Sackman and Ana Liao
Mr. Edward Sadtler
Ms. Paula J. Santrach
Mrs. Janice Sarkor
Zachary Schaefer and Abby Garrison
Ms. Janet S. Scheevel
Mr. and Mrs. Richard Schlichting
Suzanne and Katharine Schmachtenberger
Mr. and Mrs. William Schoenbeck
Monika and Bjorn Scholz
Mrs. Mary Jo Schuler
John Schwartz and Anne Drake
Mrs. Susan Schwartz
Barbara and Carrie Seanor
Mr. and Mrs. Robert Sebastian
Michael Segall and Joanna Yun-Joo Cheng
Mr. Robert I. Selby
Mr. and Mrs. Scott Shaner
Mr. and Ms. Gary Shapiro
David Shaw and Thomas Kane
Dan Sherman and Michele Hartlove
Daniel Shoumlin and Nancy McKibben
Mr. and Ms. Robert Shuford
Dr. Barbara Siepierski
Ms. Barbara Skipworth
Dr. and Mrs. Brent Smith
Mr. Andrew Smith
Margaret and Randall Snittjer



Prairie Society – Continued

Mr. and Mrs. Richard D. Yant
Ms. Janet Speer
Dr. and Mrs. Jonathan Spenner
Mr. and Ms. Thomas Spinelli
Eva Stancey Flewelling and Thomas Stancey
Ms. Jan Stanton
Mr. and Mrs. Robert Stanwood
Mr. and Mrs. Joseph Starshak
Vanessa and Robert Steele
Mr. Nelson C. Steiner
Mr. and Mrs. Joe Stephen
Ms. Sandra Sterba-Boatwright
Douglas Stewart and Linda Sahagian
Mr. William Stiles
Mr. and Mrs. Ed Stinson
Mrs. Jody Stokes
Mr. Tim Strannix
Linda and Thomas Surlak
Mr. and Mrs. Gregory Surufka
Ms. Barbara L. Sutton
Mr. and Mrs. Don Swanton
Mr. and Mrs. Daniel Sweeney
Ms. Rita A. Swensson
Mr. Newton TerMeer
Vincent M. Territo
Rebecca and David Thomas
Leslie and John Toepfer
Mr. and Mrs. Ronald Traub
Nicolas Tremblay and Florence Lambert

Mr. and Mrs. Richard Trimble
Beth Truett and Armon Haagen
Mr. and Mrs. Carl Tsuji
Ms. Theresa M. Tyranowski
Marjory and Michael Ulm
Mr. and Mrs. Tom Underwood
Mr. and Mrs. James Usrey
Mr. and Mrs. Garry Vaccaro
Mr. and Mrs. Ronald Van Wey
Mr. Gilbert Vara Jr.
Mr. and Mrs. Scott Varwig
Stephen Ver Halen and Jane Perkolup
Ms. Debra Vicharelli
Mr. and Mrs. George G. Vrechek
Ms. M.D. Walters
Ms. Xiaozhe Wang
Mr. and Mrs. Philip Waninski
Susana Ward and Karen Hostalet
P L Watt
Melissa Wells and Charles Lewis
Ms. Kirstin Wells
Jill and Vern Wennmaker
Dr. and Mrs. George White
Thomas and Nora White
Mr. and Mrs. Michael Whitt
Mr. Ken Wicks and Ms. Carol Wenk
Miss Colette Wierzbinski
Rev. Edward D. Wight
Mr. and Mrs. Kevin Wilkie

Mr. and Mrs. Roy Williams
Mr. C. Webb Williams
William Wilson and Ethel Himmel
Mr. John S. Winn
Mr. Charles K. Wishmeier
James Wisneski and Freida Johnson
Alice Withaar and Colleen Rader
Sue and Joe Wittman
Dr. Wayne Wood

Dr. and Mrs. Gabriel Woodruff
Mr. Lawrence W. Woodward
Mr. Dana "Nick" Wyman
Samuel and George Wyner
Ms. Virginia Yeck
Mr. Bernardo Zavattini
Gale Zemel and David Mausner
Mr. Long Zhang
Ms. Lisa M. Zoia



Volunteers Jo Hays and Fritz Michaelis



In 2017, 700 volunteers contributed 33,246 hours of service.

They spent 3,040 hours in training and continuing education activities, which included interpreter training for tours at the Home and Studio, Robie House, Unity Temple and specialty tour training.

Trust volunteers lead tours, host at events and assist guests at our sites.

VOLUNTEERING AT THE TRUST

Trust volunteers are integral to the success of our tours and operations. Volunteers lead site tours, assist with guests, and support special events and projects. Their commitment allows the Trust to fulfill its mission, and we are grateful for their contribution of time and service.

Linda Abrams Bisberg	Lori Barwick	Joan Brandt	Marie C. Castaneda	Julie Conmy	Jill DeCoursey
Hebah Abu Baker	Wes Barwick	Paul Braun	Caitlin Castro	Michael Connelly	Janice Delaney
Brian Alexander	Sebastian Beaghen	Katherine (Kat) Braz	Jay Champelli	James Conway	Amie DeLuca
Nancy Alpert Yarush	Mary Bechtol	Maureen Briza	Helen Chang	David Cook	Vicky Demakis
Sophie Amado	Deborah Becker	Bruce Broerman	Aurelia Chaudagne	Lauren Cooper	Sareena Denis
Donna Ambrose	Jeanette Becvar	Maurice Brooks	Stacey Che	Sarah Corley	Laurie Des Jardine
Mark Anderson	Hank Bell	Andrew Brown	Lisa Chen	Gale Cossey	Douglas Deuchler
Stephen Andersson	Theresa Benande	Marilyn Brumund	Marian Chen	Tim Cote	Brian DeVinck
Kris Anfuso	Millie Benjamin-Smidly	John Bruun	Ashley Chiu	Royse Cramton	Renna Diamond
Nellie Angel	Tim Bennett	Lawrence Bubel	Stacey Christensen	Phyllis Creek	Mike Dianich
Doris Angell	Christine Bernard	Arlene Bunis	Pam Church	Michael Crist	Steven Diaz
Jeffrey Arnett	Breanna Bertacchi	Janet Bunn	Christopher Chwedyk	Maureen Crotty	Rebecca Doar
John Arnold	Nick Binotti	Rebecca Bunn	Varun Cidambi	Debbie Crouch	Keith Dobberful
Carole Aston	Stephan Bitter	Lincoln Cairns	Connor Ciecko	Pam Cruz	Lisa Dodge
Alex Bachhuber	Jack Bizot	Helen Callahan	Elena Cincione	Jill Dahlke	Emily Dodson
Lauren Bair	Sue Blaine	Howard Campbell	Brett Clark	Kimberly Darre	Carol Dohr
Cherie Balan	Linda Blaskovich	Lee Campbell	Erin O'Donnell Clark	Belinda Dartey	Scott Dohr
Irene Balks	Christine Bloom	Renee Campbell	John Clouse	Elise Daughhete	Debbie Donahue
Janet Barkley	Karen Borgstadt	Deirdre Cannon	Sue Cohn	James Davidson	Vera Dowell
Daniel Barnett	Catherine Boshier	Patrick Cannon	Marty Colchamiro	Janet Davis	Tom Drebenstedt
Denia Barrett	Stephen Bowen	Lilja Carden	Mary Colchamiro	Marion Davis	Jan Novak Dressel
Tom Barrett	Maggie Boyaris	Barbara Carlson	John Colucci	Miriam Davison	Michael Duggan
Debby Barron	Karen Boyle	Julie Carpenter	Philip Colucci	Christine Day	Karen Duncan
Karen Barth	Barbara Bozek	Karen Carreras	Carol Conboy	Pam Deady	Becky Dunlavey
Kathleen Barton	Elizabeth Bozek	Ian Carrus	Mary Ellen Conboy	Elizabeth DeBaker	Kathleen Durkin
Richard Barton	Peg Brandon	Kathy Carrus	Kitty Conklin	Bill Decker	Francine Dzuryak

Volunteers – Continued

J. John Dzuryak	David Frost	Carolyn Guilford	Eileen Holderbaum	Jean Kengott
Linda Eales	Susan Frost	Adrienne Guldin	Elizabeth Holley	Lawrence Kengott
Trudi Eblen	Rosalie Fruchter	Earl Gundelach	Jeanne Hoogerhyde	Michael Kennedy
Leila Edwards	Paul Gajda	Donna Hachiya	Elisabeth Houston	Paul Kenworthy
Mary Egan	Linda Gallagher	Courtney Hack	Gary Howell	Zoe Kilavos
Jack Eilrich	Mary Galligan	Jacob Hagan	Debra Hruby	Jacqueline Kinnaman
Hanna Eimiller	Mario Gascon	Sally Hakes	Keith Hughes	Kathie Kinnaman
C.L. Elliott	Leigh Gates	George Hallenbeck	Michelle Humes	William Kirchner
Mark Engelen	Mary Gear	Joanne Hannum	Natsuko Imamura	Doug Kittredge
Pam Erickson	Frehiwet Fera Gebreselassie	Kathleen Hansen	Doug Irvin	Steven Klimczak
Peter Erickson	Roger Geier	Stacey Harloe	Alyssa Jaracz	Dennis Kmiec
Gwen Evans	Deb Giesler	Charles Harrington	Linda Jebavy	Laura Knitt
Michael Farley	Ted Giesler	Bob Hartnett	Gertrude Johnson	Shirley Koelling
Andrea Farrell	Art Gilfand	Crystal Harvey	Mary Johnson	Rick Koepke
Ann Fastert	Grady Gillan	Christine Hauri	Penny Johnson	Nelson Koga
Julie Federico	Ruth Glaberson	Kathryn Hausman	Wayne Johnson	Leo Koonmen
Karen Feeney	Marge Gockel	Jo Hays	Janis Johnston	Alma Koppedraijer
Robert Feeney	Amy Godino	John Heidbreder	Margaret Jones	Dorothy Koppel
Paula Fenza	Derrick Golon	Dan Heiden	Laura Jordahl	Cheryl Koselke
Kristin Ferguson	Laure Goode	Judith Heineman	Christine Junious	Diane Koselke
Anne Ferri	Laura Goodey	Lynn Hemberger	Doug Kaarre	Carol Koselke-Massery
Brian Flora	Martin Goulbourn	Kelly Hendrickson	Andy Kaczkowski	Noppharat Kositthanasarn
Alicia Fontanetta	Sabrina Granados	Mary Hennessey	Mary Kaleta	Amanda Kowalski
Tina Frank	Cliff Gray	Janine Henry de Frahan	Joan Kallas	Michele Kowalski
Gabriela Freese	Diane Gray	Harold Hering	Larry Kameya	Vincent Kowalski
Judith Frei	Kathy Greco	Janelle Herr	Victoria Kane	Margaret Kral
Lawrence Frey	Wendy Greenhouse	Dottie Hetzel	Carol Ann Karlowski	Ray Kratzer
Linda Frey	Geof Greer	Larissa Hisatomi	Steven Karlowski	Marie Kruse
Gretchen Frickx	Gayle Grindley	Ray Hofmann	James Kelly	Lisa Krzeczowski
April Frierson	Margarete Gross	Sharon Hoisington	Johanna Kelly	Lori Krzyzewski



Susan Frost, recipient of the Wallis Austin Outstanding Volunteer of the Year award.

Kay Kuhlman
 Donald Kumler
 William Kundert
 Ellen Kuner
 Natalie Kuriata
 Barbara Kurth
 Rick Kwarciany
 Vicki Kwarciany
 Barbara Kwiatkowski
 Karen Larsen
 Richard Larsen
 Gregory Larvis
 Michael Lavery
 Rita Lavin
 Barbara Lawrence
 Ted Lawrence

Volunteers – Continued

Grace Lee	Gene McCormack	Helen 'Scotty' Moorman	Eric Olson
Virginia Lennon	Nancy McCormack	Char Lyn Morris	Susan Olson
Carrie Leshyn	Bill McDonald	Dave Morris	Pat O'Neill
Jack Lesniak	Eloise McDowell	Linda Mosier	Virginia Opitz
Corrine Lettier	Steve McFarlin	Darnella Mosley	Rob Oppenborn
Donna Lettier	Abby McGovern	Rachel Much	Susan Oppenborn
Darcy Lewis	Lisa McGovern	Maryann Muggleston	Frank Orto
Janice Lewis	John McGraw	Carolyn Mulac	Kimberly Oser
Mary Jane Linke	Katie McGuire	John Murphy	Rosemary O'Shea
Timothy Loftus	Chuck McLaughlin	Praveena Narasimhan	Ute Osmer
Beth Logan	Karen McLean	Kathy Nassios	Heidi Oxford
Perla Londres	Mary McLeod	Jim Nedza	Garrick Palese
Cristina Lorie	Rick McNees	Lynn Neils	Marshall Palley
Aubrey Lutz	Joyce Meddaugh	Brett Nerstrom	Joan Pantsios
Jessica Luzar	Dick Meister	Rebecca Nerstrom	Edward Pariser
Heather MacGregor	Joan Meister	Betsy Timm Newton	Carol Patterson
Daniel Madden	Aura Mena	Philip Neznanov	David Patterson
Teresa Maganzini	Bill Merrill	Lourdes Nicholls-Kaczowski	Frank Patterson
Susan Maltese	Fritz Michaelis	Pam Niesluchowski	James Peters
Sandra Mangione	Carol Michelini	Mikottis Noah	Cristina Petrea
Pamuella Mann	Kimberly Mikuta	Samijean Nordmark	Cheryl Phillips
Tom Marhevko	Doreen Miller	Leona Norris	Tom Phillips
Ann Marohn	Lynn Miller	Gary Northrup	Don Pielin
Ruth Martin	Adan Miranda	Angela Novak	Renee Pleshar
Martha Martinez	Chris Mlynarczyk	Martina Novak	Suzanne Poeschel
Sam Marts	Tim Mole	Polly Novak	Mike Poirier
Marcia Matavulj	Rocio Monge	Bruce O'Brien	Frank Pond
Deborah Maxwell	Susan Montgomery	Marie V. Olmos	Terry Poppleton
Katie Maxwell	Debra Moon	Robert Olney	Kay Poyner Brown



Volunteers celebrate ten years of service with the Trust.

John Rafkin	Cecilia Resende-Santos
Alan Raphael	Dan Reynolds
Graham Rarity	Pamela C. Reynolds
Madeleine Raymond	Mirella Ribauda
Nancy Reeder	Dovile Riebschlager
Linda Reeve	Anthony Riley
Helen Lee Reid	Eileen Robbins
Peter Reidy	David Robson
Karl Reko	Irma Rodriguez
Ruth Reko	Mary Roeing
Susan Remington	Hiram Roman

Volunteers – Continued

Ron Roman	Ross Simmons	Collin Sugg	Anita Walag	Simone Wright
Jerry Rosenthal	Ken Simpson	Teri Sullivan	Jana Wallace	Peter Yankala
Cynthia Ross	Madonna Sivwright	Dan Sweeney	Ellen Walsh	JeNell Yoka
Lance Royce	Carolyn Skipper	Maria Sweeney	Jack Walsh	Charles Young
Lynne Ruch	Robbie Skoronski	Jeanne Takami	Debra Walters	Martha Yount
Heidi Ruehle-May	Deb Sloan	Vivian Tedford	Lauren Waninski	Thomas Yun
Janet Sabri	Bob Smith	Richton Thomas	Barbara Watkins	Terry Zachata
Sean Sabri	Kristina Smith	Jessica Thurk	Roseanna Watson	Peg Zak
Chettha Saetia	Yvonne Smith	Tim Thurlow	Terrence Watson	Frank Zarate
Maureen Saetia	Mark Smylie	Cynthia Tom-Klebba	Samuel Watters	Yinna Zhang
Ashley Schaffer	Linda Solan	Pat Trafton	Beverly Weable	
Cynthia Schaffer	Jim Solnes	Susie Trexler	Katelyn Weil	
John Schaffer	Steve Sommers	Bob Trezevant	Michael Weiland	
Julie Schaffer	John Sosnowski	Elizabeth Trumbull	Steven Weis	
Kathleen Schalk	Gavin Souter	Denise Trylovich	Edward White	
Genie Schauerte	Norman Spielman	Sharon Tucker	James White	
Jeff Schertz	Michelle Springer	Theresa M. Tyranowski	Elbert Whitfield	
Erin Schettler	Jan Stanton	Richard Uebele	Pam Wick	
Bryan Schneider	David Staskowski	Sherry Vale	Anna Wight	
Peter Schramm AIA	Marianne Stefanski	Nate Vandenbrook	Pat Wilkinson	
Lisa Schrenk	Michael Stewart	Kraig Vandiver	Amanda Willard	
Jo Ann Schurman	Val Stewart	Catherine Varnas	Barbara Willard	
Walter Schweiger	Kelsey Stimple	Carrie Vasquez	Carolyn Williams	
Ronnie Schweit	Joan Stockmal-Gordon	Mary Villareal	Michael Williams	
Mark Scott	Amy Stojkovich	Janet Volk	Andria Wilson	
Sam Scriba	Amy Stricker	Joyce Voss	Janina Wimunc	
Janice Serafini	Kathy Stricker	Judy E. Voss	Madison Wittkofski	
Valerie Sherman	Kimberly Stupar	Mary Wacker	Jonathan Wlodaver	



Julie Conny receives the 2017 Catherine McLoughlin Volunteer Hospitality Award from 2016 recipient Felix Diaz.



John Bruun, Susan Remington and Patrick Cannon, recognized for forty years of service.

Statements of Financial Position – December 31, 2017 and December 31, 2016

Statements of Activities – For the Years Ended December 31, 2017 and December 31, 2016

STATEMENTS OF FINANCIAL POSITION

ASSETS	DECEMBER 31, 2017	DECEMBER 31, 2016
Cash & Cash Equivalents	1,547,132	963,084
Accounts Receivable	5,663	2,324
Grants & Pledges Receivable, net	304,006	250,258
Inventory	448,783	402,636
Prepaid Expenses	83,331	104,705
Property & Equipment	3,766,275	3,394,374
Cash Held for Investment	37,298	37,298
TOTAL ASSETS	6,192,488	5,154,679
LIABILITIES	DECEMBER 31, 2017	DECEMBER 31, 2016
Accounts Payable	133,935	89,653
Accrued Expenses	130,940	106,786
Deferred Income	493,616	228,150
TOTAL LIABILITIES	758,391	424,589
NET ASSETS	5,434,097	4,730,090
TOTAL LIABILITIES & NET ASSETS	6,192,488	5,154,679

STATEMENTS OF ACTIVITIES

REVENUES	YEAR ENDED DECEMBER 31, 2017	YEAR ENDED DECEMBER 31, 2016
Memberships	240,883	186,950
Contributions	1,229,243	396,010
Grants	6,300	168,382
Tours & Education	3,181,657	2,868,989
Merchandise Sales	2,068,891	2,290,130
Special Events	100,407	86,432
Investment Income	140	1,151
Licensing Revenues	320	1,765
Miscellaneous	4,575	8,014
In-kind Donations	315,989	235,867
TOTAL REVENUES	7,148,408	6,243,690
EXPENSES	YEAR ENDED DECEMBER 31, 2017	YEAR ENDED DECEMBER 31, 2016
Program Services	3,590,583	3,473,054
General & Administrative	1,153,894	1,113,418
Fundraising	625,074	597,866
Cost of Sales	1,074,850	1,148,526
TOTAL EXPENSES	6,444,401	6,332,864
INCREASE (DECREASE) IN NET ASSETS	704,007	(89,174)
NET ASSETS BEGINNING OF PERIOD	4,730,090	4,819,264
NET ASSETS END OF PERIOD	5,434,097	4,730,090

FINANCIAL STATEMENTS

Frank Lloyd Wright came to Chicago in 1887 at the age of twenty. Chicago was the forge that steeled his talent and ambition. Working with great architects of the era, Wright set a professional course that would surpass many of his contemporaries. Without Chicago, Frank Lloyd Wright would not have become the great architect we now celebrate.



The Frank Lloyd Wright Trust is a Chicago-based 501(c)3 that operates at five Wright-designed sites and a merchandise center. The Trust was founded and incorporated as a State of Illinois not-for-profit on June 17, 1974.

CENTRAL OFFICES

The Rookery

209 S. LaSalle Street, Ste 118
Chicago, IL 60604
312.994.4000

FRANK LLOYD WRIGHT HOME AND STUDIO

951 Chicago Avenue
Oak Park, IL 60302

UNITY TEMPLE

875 Lake Street
Oak Park, IL 60301

FREDERICK C. ROBIE HOUSE

5757 S. Woodlawn Avenue
Chicago, IL 60637

EMIL BACH HOUSE

7415 N. Sheridan Road
Chicago, IL 60626

flwright.org