



**ANNUAL REPORT**  
January 1 - December 31, 2016



Frank Lloyd  
Wright Trust  
[flwright.org](http://flwright.org)



Letter from the Chairman of the Board .....	3
Mission and Core Values .....	5
Report of the President and CEO.....	6
2016 Wright Night.....	12
2016 Housewalk .....	13
Staff .....	14
Youth and Family Outreach .....	15
Internship Program .....	16
Visitor Information .....	17
In Partnership with the Community.....	18
Foundation and Business Contributors.....	19
Donors.....	20
Society Level Members.....	24
Volunteers .....	28
Financial Statements .....	34

*Cover Image: The Trust welcomed the William Winslow House back to the Wright Plus Housewalk this year after a thirty-nine year absence. Reopened to the public for the first time in two generations, this magnificent house inspired the admiration of all those who visited.*

## TABLE OF CONTENTS

## DEAR MEMBERS AND FRIENDS

Strengthening our governance and community ties, the Trust Board welcomed three new members in the past year. Robert Pasin heads Radio Flyer Inc., the business founded by his grandfather in 1917. Radio Flyer is an iconic brand that holds a special place in people's hearts. A graduate of University of Notre Dame, where he served as student body president, Robert completed his M.B.A. from Northwestern University's Kellogg Graduate School of Management. He and his wife Muriel live in Oak Park.

Kelly Small is a veteran of many not-for-profit Boards. She and her husband Michael, CEO of Gogo, a leading inflight Internet company, have lived in Chicago six years, after many years in New Jersey. Michael is a graduate of Booth School of Business at University of Chicago. Kelly and Michael reside in Lincoln Park and will co-chair the Trust's 2017 *Wright Night* benefit event.

Kurt Neumann is a partner at Perkins Coie LLP, where he specializes in corporate law. Kurt graduated from the University

of Michigan with a bachelor's degree in Philosophy and from Duke Law in 2002. He has focused his *pro bono* efforts on children's welfare issues. Since 2012 Kurt and his wife Mary Jane have lived in the Ernest Hemingway boyhood home, which they made available to the Trust for the 2015 Wright Plus Housewalk.

In addition to these new Board members, we are pleased to welcome veteran member Graham Rarity back to the Board for his third term. As the Trust continues to grow its resources, an active and engaged Board is essential to our success. To my fellow Board members, I extend my sincere appreciation and gratitude for their extraordinary commitment, goodwill, and generosity.

The Chicago community and beyond has continued to respond to the Trust's mission and values, as we seek support for preservation of our historic sites and our expanding educational initiatives. I extend our profound thanks to the Trust's loyal donors, volunteers, members, and friends

### BOARD OF DIRECTORS 2017

JOHN M. RAFKIN, CHAIRMAN OF THE BOARD  
ROBERT MILLER, VICE CHAIR AND CHAIR,  
EXECUTIVE COMMITTEE  
DAVID DUNNING, TREASURER  
GRAHAM J. RARITY, SECRETARY

PETER R. GEORGE  
DAVID HERNANDEZ  
PATRICIA HUNT  
ROBERT PASIN  
DON ROSINWINKEL  
KELLY SMALL  
RANDALL S. THORNE  
KURT NEUMANN  
TIM SAMUELSON, ADVISORY MEMBER



John Rafkin, 2017 Chairman, Board of Directors

## LETTER FROM THE CHAIRMAN OF THE BOARD

who inspire and energize us. And I add my thanks to members of our staff and our president & CEO, Celeste Adams, with whom we work in harmonious collaboration and who dedicate their many talents and capabilities to the fulfillment of our shared aspirations.



John M. Rafkin

2016 Chairman, Board of Directors



Robert Pasin



Kelly Small



Kurt Neumann



## **MISSION**

---

The mission of the Trust is to engage, educate and inspire the public through interpretation of Frank Lloyd Wright's design legacy and preservation of his original sites for future generations.

## **CORE VALUES**

---

### **ENGAGEMENT**

Engaging a broad and diverse local, regional, national and international audience through a dynamic cultural tourism program, a comprehensive and interactive website, and consistent marketing and communications initiatives.

### **EDUCATION**

Affirming the contemporary relevance of Wright's design legacy by educating K-12 students through innovative design programs that nurture individual vision; by presenting quality adult enrichment programs, national/international travel programs; and by producing electronic/print publications.

### **INSPIRATION**

Inspiring our audience through powerful aesthetic experiences of authentic Wright sites, preserved to Wright's original design vision.

### **FOR FUTURE GENERATIONS**

Developing the Trust's resources and maintaining the Trust's financial stability in order to sustain Wright's original sites for future generations and ensure a lasting and secure future for the Trust, supported by strong community and business relationships and by dynamic Board engagement.



## TO ENGAGE EDUCATE AND INSPIRE

Unity Temple and Robie House, two great Prairie-style masterworks, were deeply engaged in preservation projects during 2016 as the Trust celebrated the Prairie School in its Wright Plus Housewalk.

*Restoring Wright: Unity Temple in Progress*, a lecture program presented by the Trust at Pritzker Auditorium on June 7, 2016, marked a halfway point in the 2-year closing of this great Wright landmark building. Scheduled to re-open in 2017, Unity Temple hosted 2016 hard-hat tours and produced online videos describing the transformative restoration funded by Alphawood Foundation and led by Chicago-based Harboe Architects, preservation specialists.

At Robie House, the Trust conducted pre-construction analysis of exterior and interior materials and conditions with Harboe Architects and sponsored by Alphawood Foundation. This work will conclude in late summer 2017 and set the stage for the completion

of Robie restoration. Six leaded-glass casement doors in the living room were fully restored with funding provided by the Friends of Heritage Preservation. A new climate management system was purchased and installed. Upgrades were made to the courtyard concrete and repairs were made to window and balcony planter linings.

On June 17 the Trust celebrated the life of preservation architect John Thorpe, who passed away in January 2016. One of the founders of the Trust in 1974, John led the restoration of the Home and Studio and served as preservation architect for Prairie-style homes in Oak Park and around the country. Founders Jack Lesniak, Ann Marohn and Peg Zak shared personal memories of John, and Tom Thorpe paid tribute to his brother's many talents and admirable life work. On this occasion the Trust's newest community asset was officially named The John G. Thorpe Restoration Resource Center.



Restoration of Robie House leaded glass

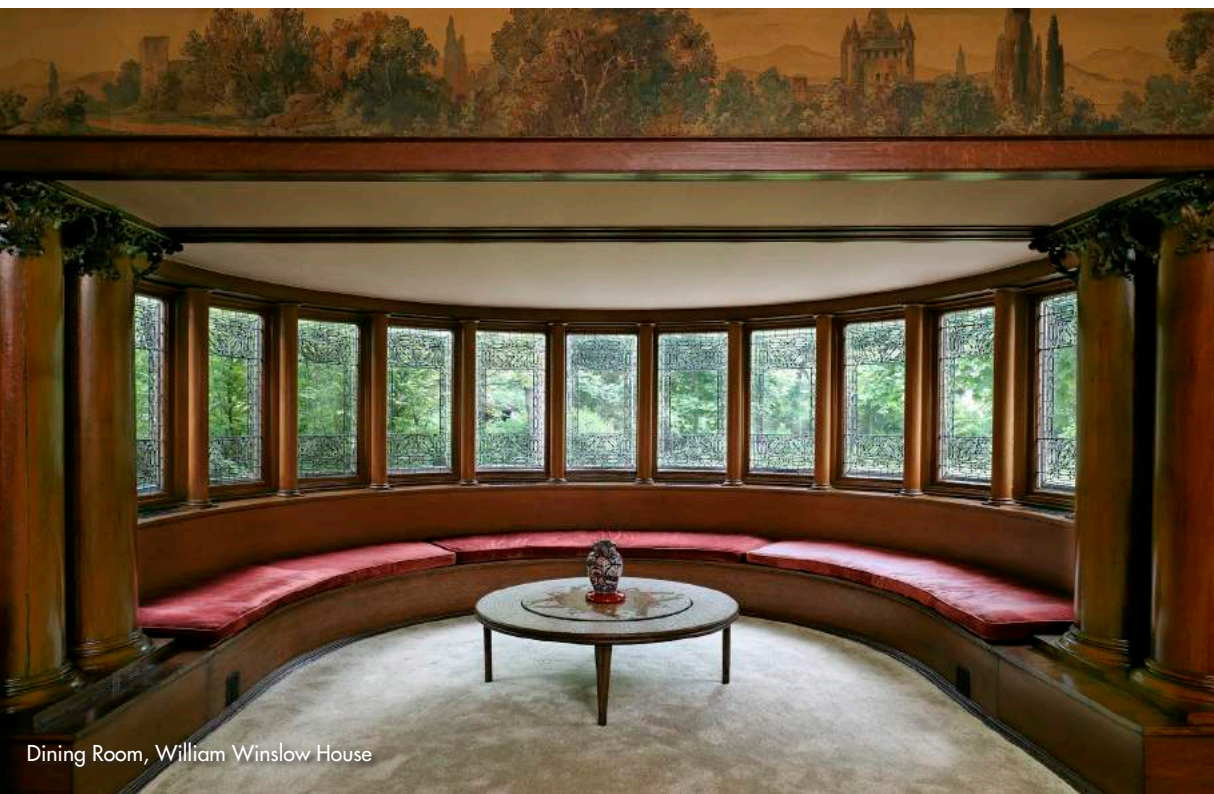


Tom Thorpe speaks at tribute for his brother, John G. Thorpe

## REPORT OF THE PRESIDENT & CEO



Inglenook, William Winslow House



Dining Room, William Winslow House

Embracing a Prairie School theme, the 2016 Wright Plus Housewalk included residences designed by William Drummond, Charles E. White, John S. Van Bergen, and Barry Byrne. A short film on these architects and the Prairie School, prepared by Trust Curator, David Bagnall, was shown continuously on the day of the Walk at River Forest Methodist Church, designed by Drummond.

For the first time in thirty-nine years, the William Winslow House joined the Housewalk. William Winslow House launched Frank Lloyd Wright's career as an independent architect. His first commission after leaving the office of Adler and Sullivan, Winslow House was the grand residence of a prosperous young Chicago businessman. The fireplace is the focus of entry and occupies the center of the house, underlining the theme of hearth and home. A library and living room are located on either side of the entrance with a large dining room in the back, overlooking the gardens.

With lines around the block on a sunny May 21, the grand and stately modern home echoed Wright's words, "The Winslow House burst on the view... like primavera in full bloom. It was a new world to Oak Park and River Forest." Winslow House pays homage to Louis Sullivan as well as signaling Wright's vision toward a new American architecture – the Prairie style.

The Trust's new travel program: *Wright in the Region* continued to flourish with destinations in Illinois and Wisconsin. The Trust's national and international travel program, *Travel Wright*, had an outstanding year with sold-out trips to California, Japan, Spain, and two trips to the newly restored Darwin Martin House in Buffalo, New York.

Toshiko Mori, design architect of the elegant and minimalist visitor center at Darwin Martin House, was the speaker for the Trust's 2016 *Thinking into the Future* lecture at the Logan Center for the Arts at University of Chicago. Professor Mori described the challenge of designing a building adjacent to a Frank Lloyd Wright landmark. She discussed the environmental and design features of the visitor center that have made it an effective addition to the site.

At the University of Chicago Lab Schools' new Gordon Parks Arts Hall, the Trust presented a lecture and book signing by Stuart Cohen, author of *Inventing the New*

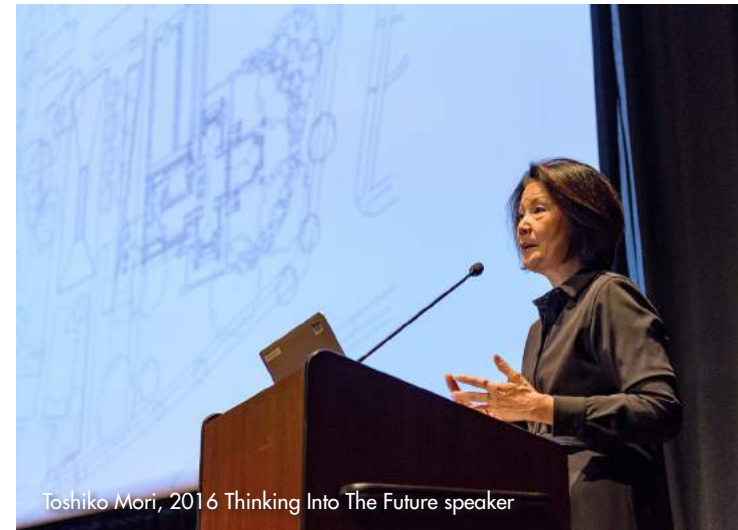
*American House: Howard Van Doren Shaw and Frank Lloyd Wright*. Following the lecture, the Trust organized an excursion to the North Shore to visit the recently restored Ragdale, originally Shaw's personal summer retreat and now an artists' community. The excursion also included Shaw's Market Square, the first planned shopping district in the country, and Frank Lloyd Wright's Herbert F. Glore House, the only Wright residence in Lake Forest.

At the Home and Studio, preservation break in January-February allowed for installation of a new boiler, plaster and paint repairs in the Studio, restoration of a studio door, and deep cleaning and oiling of floors. Outside the Studio, the Village of Oak Park closed Chicago Avenue during the summer months for its street and parkway improvement project. On completion, the village fully restored the carriage stop in front of Wright's Studio to its 1909 appearance.

Attendance at Trust sites during 2016 totaled 124,275. The Trust's website



Travel Wright guests visit the Robert R. Blacker House in California



Toshiko Mori, 2016 Thinking Into The Future speaker



Guests at Thinking Into The Future





Elijah Wood and volunteer interpreter Linda Abrams



Robert Bathurst



Martha Stewart and Elizabeth Graves

welcomed over 700,000 unique visitors. Social media platforms grew from 2015 to 2016 with Facebook increasing from 32,000 in 2015 to over 40,000 in 2016; Twitter from 2,500 in 2015 to over 3,000 in 2016; Instagram from 2,000 in 2015 to over 4,000 in 2016; and Pinterest from 350 in 2015 to over 500 in 2016.

Every year the Trust's five sites attract visitors from around the country and the world, including celebrities with a special interest in Frank Lloyd Wright. This year, English actor Robert Bathurst, a member of the *Downton Abbey* cast starring in a production at Chicago Shakespeare Theater; Martha Stewart visiting with her editor; and American actor Elijah Wood, known for his portrayal of Frodo Baggins in *The Lord of the Rings* film trilogy, all were fascinated by Wright's living legacy.

## COMMUNITY OUTREACH

A grant from the Harper Court Arts Council enabled the Trust to establish a dedicated Robie House Educator in 2016. This full-time position at Robie House enhances the Trust's presence in

the Hyde Park Kenwood community and surrounding neighborhoods, allowing for the improved facilitation of onsite programs at Robie House and outreach programs in neighborhood schools, libraries, parks, and community centers.

In March the Trust Education Department hosted educators attending the National Art Education Association (NAEA) annual conference, conducting tours and workshops for 63 teachers visiting Chicago. With support from the Terra Foundation for American Art, the Trust launched a series of professional development events for Chicago Public School teachers. Each teacher received classroom art supplies partially donated by Blick Art Materials and Strathmore Paper in addition to methods for teaching the design process. Under the guiding principle *Designing a Better World*, the Terra Foundation grant will also support a new education website for teachers, which will go live at the Trust in 2017.

During July and August the Education Department initiated Pop Up Design Studios for community members and



Students from Eureka High School visit the Home and Studio



Intern Nikita Dulin works with Youth Architecture Workshop participant

visitors to both Robie House and the Home and Studio. These new offerings drew 280 participants from the two sites. The Trust's longstanding *In Wright's Studio: Summer Design Camp* continued in Oak Park for its 40th year, and *Design Team @ Robie House* is a new summer program for families in Hyde Park and Southside neighborhoods.

The Trust's in-school program for CPS, Charter, and private schools continued offering grade-specific classroom projects with four thematic approaches: *Designing with Glass: The Art of Geometry*, *Building Blocks of Architecture: Froebel Design*, *Designing and Building: My New House*, and *Let's Make Plans: Designing My Neighborhood and City*.

In 2016 Stevenson Elementary School, located in a Chicago southwestern suburb, received one of Ingenuity's Creative Schools Fund Grants and selected the Trust to create a special 6-week program that served 283 students in nine individual classes. Trust educators worked with teachers and students at the school on a daily basis during the entire program.

During 2016 over 3,000 students in

36 Chicago city and suburban schools participated in the Trust's education programs. In Oak Park, every 4th grade student visited the Home and Studio and participated in classroom workshops on the theme of *Geometry in Architecture*. Youth and Family programs offered by the Education Department served over 2,600 throughout the greater Chicago metropolitan area. New learning kits, part of a 2015 national outreach initiative, grew in popularity during 2016, providing over 900 children across the country access to *Building Blocks of Architecture*. The Trust's online educational resources drew a local, regional and international audience of 220,000.

## A SECURE FUTURE

Donors to the Trust during 2016 supported important preservation projects and expanding education programs that fulfill the Trust's mission. Our service to Wright's legacy and to our local, regional, and national community would be impossible without the support of John D. and Catherine T. MacArthur Foundation, Terra Foundation for American Art, Tawani Foundation, Kelly and Michael

Small, U.S. Bank Foundation, Hickory Foundation, WestRock, and Leslie Haines.

The 2016 Wright Plus Prairie School Housewalk major sponsors included Andersen Windows, Village of Oak Park, @properties, Blue Cross Blue Shield Illinois, Good Heart Work Smart Foundation, ComEd, Downtown Oak Park, Heritage Tile of Oak Park, Homewerks, and Visit Oak Park.

In 2016 the former Chairman's Reception was restyled as *Wright Night* and co-chaired by Robert Pasin and Muriel Quinn. The evening featured highly sought after auction items including Tiffany jewelry, vintage wines, and a custom Tesla electric toy car, a replica of the actual car. The Honorary Committee included Ken and Patty Hunt, Lisa and Ray Lewis, Gary and Kim McCullough, John Raffkin and Anita Levin, and Karen and Don Rosenwinkel.

*Wright Night* broke all previous revenue records with net revenue of \$66,888 thanks to the generous sponsorship of Robert Pasin and Muriel Quinn, Radio Flyer, Inc., Jones Day, Andersen Tax, Patty

and Ken Hunt, Lisa and Ray Lewis, Gary and Kim Mc Mullough, John Raffkin and Anita Levin, Leopardo Companies, Agape Foundation, and Baker & McKenzie.

Major gifts for restoration of Robie House from The Meijer Foundation, John W. and Jeanne M. Rowe, and Richard and Mary Gray advanced the Trust toward its campaign goal to complete the restoration of Wright's greatest Prairie-style house.

The Trust's ongoing commitment to preservation and education was achieved during 2016 by an outstanding Board of Directors, dedicated staff, and devoted volunteers working together to enhance the quality of life in our community, extend our educational impact around the world, and perpetuate the unique modern vision and design heritage of Frank Lloyd Wright.



President & CEO



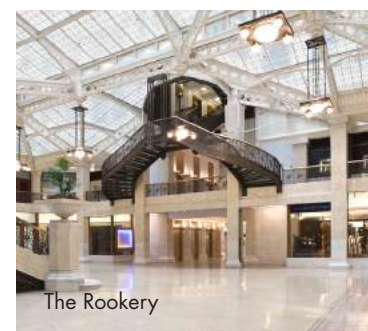
Unity Temple



Frank Lloyd Wright Home and Studio



Frederick C. Robie House



The Rookery



Emil Bach House



2016 Wright Night Honorary Committee (L to R: John M. Rafkin, Anita Levin, Ken Hunt, Patty Hunt, Muriel Quinn, Robert Pasin, Karen Rosenwinkel, Don Rosenwinkel). The evening with silent auction surpassed previous records.



Wright Night silent auction



Wright Night co-chair Robert Pasin with Tesla



Board Member Kelly Small with husband Michael, daughter and son-in-law

## 2016 WRIGHT NIGHT



Guests outside the William E. Drummond House



Tours at the Thomas H. Gale House

On Saturday May 21, Wright Plus 2016 explored the Prairie School's early 20th century architecture with interior tours of nine private homes in Oak Park and River Forest. The walk featured four homes designed by Wright and five buildings by the architects who worked in his Oak Park studio.



Inside the Home and Studio Playroom



Exterior, Charles J. Barr House



Exterior, William Winslow House

## 2016 HOUSEWALK

## ADMINISTRATION

Celeste Adams	President & CEO
Rich Nichin	Director of Finance
Susan Harris*	Human Resources Manager
Kathleen Francis	Staff Accountant
Rebecca Girard	Administrative Coordinator & Central Office Manager
Jerome Bambera	Accounting Assistant

## COMMUNICATIONS

Zarine Weil	Director of Communications
Andrea Brown	Senior Manager - Public Relations
Christine Trevino	Communications Coordinator
Debbie Labeledz*	Graphic Designer

## DEVELOPMENT

Thomas Gull	Director of Development
Lise Braithwaite	Manager, Annual Giving and Events
JoEllen Narsutis*	Membership and Donor Database Coordinator

## COLLECTION AND PROGRAMS

David Bagnall	Curator and Director of Interpretation
Risa Sekiguchi Vuillemot*	Travel Manager

## EDUCATION

Kim Scata	Senior Manager for Education
Laura Winkle	Manager for Education
Catherine LiaBraaten	Outreach Educator
Kathryn Grindley	Home and Studio Educator

## FACILITIES

Karen Sweeney	Preservation Architect and Facilities Administrator
Patrick Gronek	Caretaker
Michael Wait	Home and Studio Preservation Technician
John Geyer*	Preservation Technician
Omar Evans*	Home and Studio Housekeeper

## INFORMATION AND TECHNOLOGY

Ahnquajj Kahmanne	Director of Information Systems Technology
Danny Yuen	Website Administrator and Interactive Designer
Mazahalo Ashogbon*	Technology Support

## GUEST RELATIONS

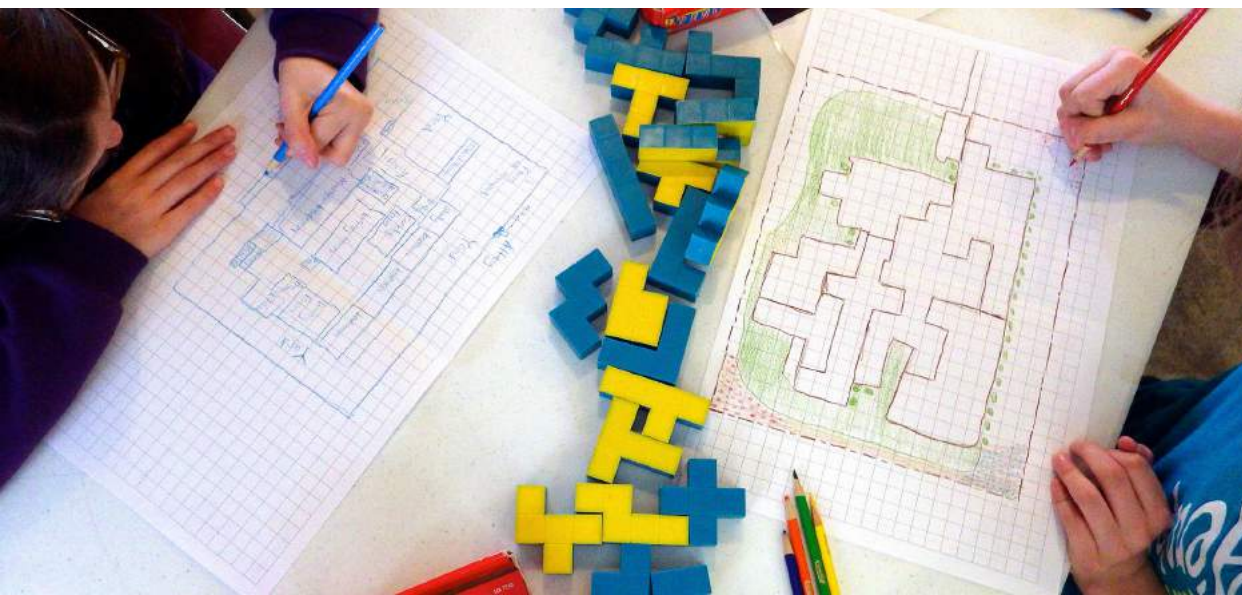
Christena Gunther	Director of Tour Operations and Guest Experience
Mark Campbell	Oak Park Daily Operations Manager
Elizabeth Murphy	Group Tours and Site Rental Manager
Joseph Barrett	Robie House Daily Operations Manager
Linda Bonifas-Guzman	Volunteer Resources Manager
Angela Whitaker*	Wright Plus Coordinator
Christina Ruscitti	Guest Relations & Volunteer Coordinator
Daniela Blanco	Guest Relations Representative & Manager on Duty
Taylor Behary	Guest Relations Representative & Manager on Duty
Madeline Mason	Rookery Receptionist & Guest Relations Manager on Duty
Elizabeth Metcalfe*	Guest Relations Representative
Claire Schnucker*	Guest Relations Representative
Rita Williams*	Guest Relations Representative
Carol Herbstritt*	Guest Relations Representative
Brittany Yelinek	Manager, Home & Studio Shop
Travis Marshall	Manager, Robie & Rookery Shops
Diane Kittredge*	Museum Shop Sales Representative
David Olson*	Museum Shop Sales Representative
Randolph Mical*	Museum Shop Sales Representative
Sabrina Granados*	Museum Shop Sales Representative
Alexandra Verdoscia*	Museum Shop Sales Representative

## MULTI-CHANNEL RETAILING

Heidi Farina	Director of Multi-Channel Retailing
Jason Gums	Multi-Channel Retail Center Manager Retailing
Michelle Foland	Multi-Channel Retail Manager Retailing
Steve Cothard	Shipping and Receiving Coordinator
Katherine Bruun	Merchandise Customer Service Assistant
Richard Tomasello*	Shipping and Receiving Assistant

\* part-time

## STAFF (AS OF DECEMBER 31, 2016)



Throughout the year, the Frank Lloyd Wright Trust presents K-12 arts education programs for children and families at its historic sites, local schools and other community spaces. The Trust's arts education offerings also include professional development programs for teachers. In 2016, Trust arts education programs served 3,000 students in the Chicago metropolitan area and 2,600 participants in youth and family programs. In addition, 900 children across the country utilized the Trust's new learning kits and 220,000 individuals accessed educational resources online.

## YOUTH AND FAMILY OUTREACH

# 2016 STUDENT INTERNSHIP PROGRAM

The Trust provides internship opportunities to students, graduates, and career-changers seeking to broaden their experience by working and learning in a professional museum environment.

## EDUCATION

- Clara Dandy University of Chicago Laboratory Schools Robie House Internship
- Nikita Dulin University of Chicago Laboratory Schools Robie House Internship
- Illinois Arts Council Agency - Summer Youth Employment in the Arts
- Criss Edwards University of Chicago Laboratory Schools Robie House Internship

## GUEST RELATIONS

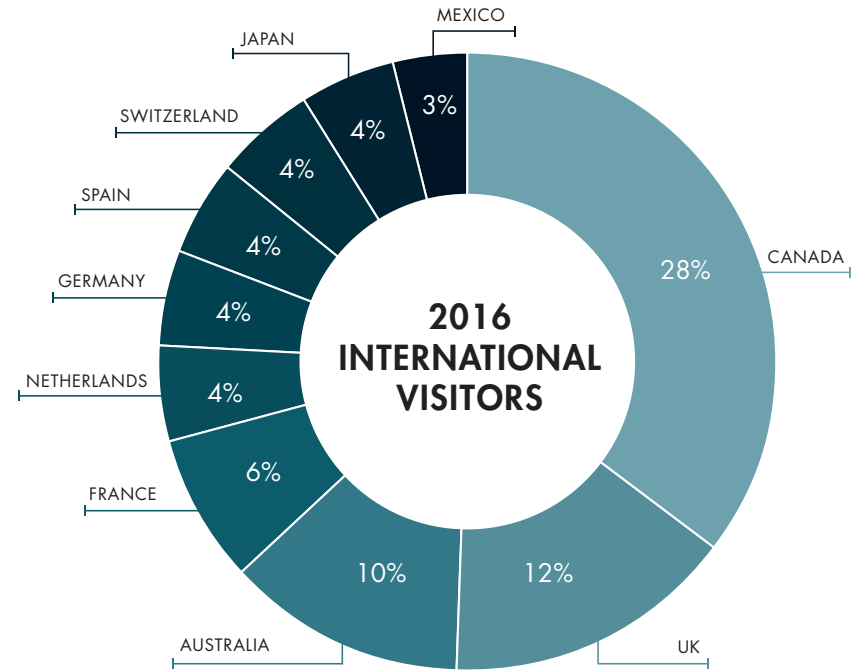
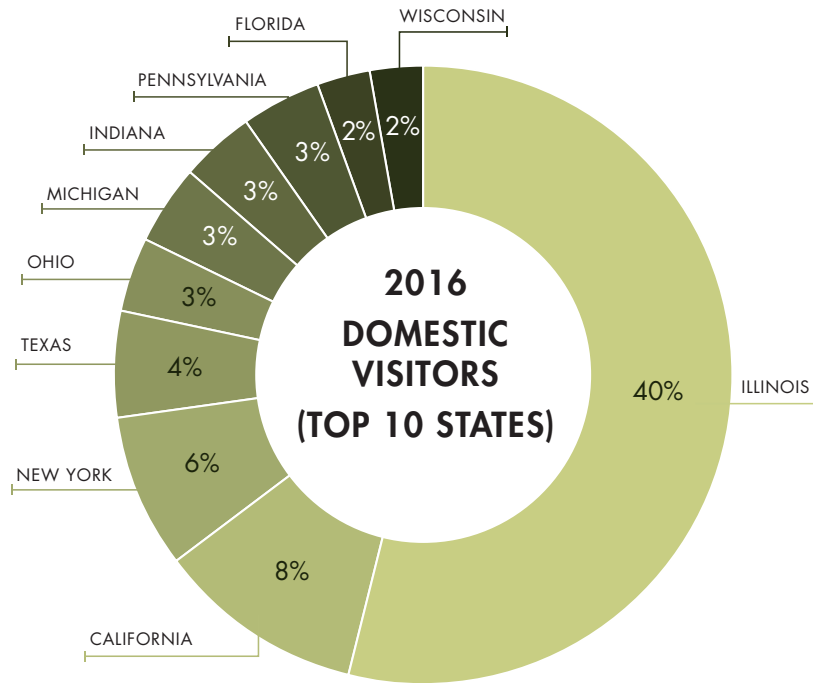
- Maggie Eickhoff Indiana University
- Rachel Much University of Chicago
- Gwen Stricker Ball State University



# INTERNSHIP PROGRAM



As the "gateway to Frank Lloyd Wright in Chicago," the Trust welcomed more than 124,000 visitors in 2016.

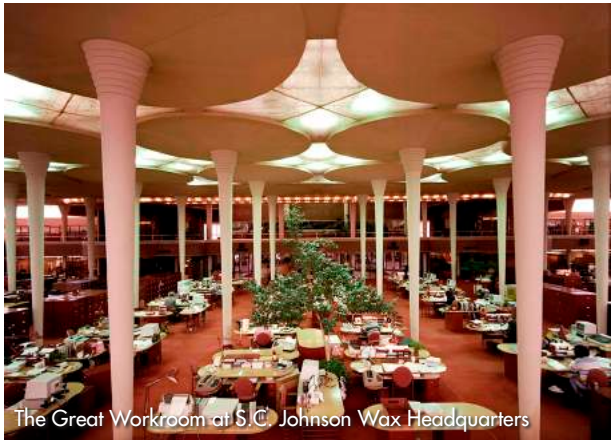


## VISITOR INFORMATION

During the grant period, the Frank Lloyd Wright Trust partnered with forty-one organizations. Partnership types include audience outreach, marketing and promotions, K-12 education, tour programs, tourism promotions, community engagement, and special events. Trust partners are below-listed.

- 57th Street Art Fair
- American Institute of Architects-Chicago
- Art Institute of Chicago
- At Home in Chicago, Association of Chicago House Museums
- Blue Star Museums
- Chicago Architecture Foundation
- Chicago Cultural Accessibility Consortium
- Chicago Flower and Garden Show
- Chicago Public Schools
- Choose Chicago
- Dana-Thomas House Foundation
- Downtown Oak Park
- Driehaus Museum
- Elmhurst History Museum
- Frank Lloyd Wright Building Conservancy
- Forest Preserve District of Kane County
- Glessner House
- Greenline Wheels
- Illinois Arts Council Agency
- Museum Campus South
- National Education Association (NAEA)
- Oak Park Education Foundation
- Oak Park Elementary School District 97

- Oak Park River Forest Infant Welfare Society
- SC Johnson
- Seminary Co-Op Bookstore
- Tawani Enterprises, Inc.
- Terra Foundation for American Art
- The Laurent House Foundation
- Unity Temple Restoration Foundation
- Unity Temple Unitarian Universalist Congregation
- University of Chicago
- University of Chicago Laboratory Schools
- Village of Oak Park
- Visit Oak Park
- Wright in Kankakee
- Wright in Wisconsin



# IN PARTNERSHIP WITH THE COMMUNITY

## FOUNDATIONS

In 2016, the Trust received charitable support for historic preservation and restoration projects, education programs for children and teachers, lectures and public programs, community outreach, and general operations from the below-listed foundations.

Agape Foundation  
Wallis Austin and Virginia Austin Fund  
Harper Court Arts Council  
Hickory Foundation  
Hildner Foundation  
Illinois Arts Council Agency  
MacArthur Foundation  
The Meijer Foundation  
Oak Park Area Arts Council  
Summerfield Foundation  
Tawani Foundation  
Terra Foundation for American Art

## BUSINESS PARTNERS

Business Partners supported Trust operations through event sponsorships and charitable contributions of \$1,000 or more in 2016. Business Partners are listed alphabetically.

@properties  
Andersen Tax  
Andersen Windows  
ARZU Studio Hope  
Bach House  
Baird & Warner, Inc.  
Baker McKenzie  
Blue Cross Blue Shield of Illinois  
Bulley & Andrews, LLC  
Commonwealth Edison Company  
Community Bank of Oak Park and River Forest  
Creative Edge Master Shop  
Downtown Oak Park  
FGMK  
Gensler  
Good Heart Work Smart Foundation  
Google, Inc.  
Heidrick & Struggles  
Heritage Tile, LLC  
Jones Day  
Katten Muchin Rosenman LLP

Leopardo Companies  
McDermott Will & Emery  
Mitchell Gold + Bob Williams  
Northern Trust Bank  
Oak Park-River Forest Community Foundation  
Radio Flyer, Inc.  
Sherwin-Williams  
Tiffany & Co.  
US Bank  
Vantage Oak Park  
Village of Oak Park  
Village of River Forest  
Visit Oak Park  
Von-Dreele Freerksen Construction Co.  
WestRock  
Window Works

## BUSINESS SUPPORT

Additional business support up to \$999 is listed alphabetically.

Amazon Smile  
Clauss Brothers  
Cucina Paradiso  
Delia's Kitchen  
Encore Contractors, Inc.

Gagliardo Realty Associates LLC  
Giordano's of Oak Park  
Hemmingway's Bistro  
Il Vicolo Trattoria  
Mickey's Gyros IV  
Oak Park Brewing Co. & Hamburger Mary's  
Petersen's Ice Cream  
The Little Gem, Inc.  
Weichert Realtors-Nickel Group  
Winberie's Restaurant and Bar

## MATCHING GIFTS

Ally Financial Inc  
Clorox Company  
ExxonMobil Foundation  
GE Foundation  
HD Smith Foundation  
Illinois Tool Works Foundation  
Kirkland & Ellis Foundation  
Prudential Foundation Matching Gifts  
The Progressive Insurance Foundation

# FOUNDATION AND BUSINESS CONTRIBUTORS

The Frank Lloyd Wright Trust recognizes with gratitude the generous support of the following individuals from January 1, 2016 through December 31, 2016.

## INDIVIDUAL SUPPORT

### \$25,000+

Mr. and Mrs. Richard Gray  
Muriel Quinn and Robert Pasin  
John W. and Jeanne M. Rowe

### \$10,000—\$24,999

Mr. and Mrs. Michael Small

### \$5,000—\$9,999

Leslie Haines  
T. Kendall Hunt Family Foundation  
and Patricia D. Hunt  
Lisa and Ray Lewis  
John M. Raffkin and Anita Levin  
Graham J. Rarity

### \$2,500—\$4,999

Celeste M. Adams  
David Hernandez and  
Tereasa Surratt  
Bill Kundert and Judi Davenport  
Mr. and Mrs. Paul Laughlin  
Mr. and Mrs. Gary McCullough  
Louis and Joan Mercuri  
Mr. Loren Rogers  
Karen and Don Rosenwinkel  
H. E. Swantz  
Mr. and Mrs. Thomas Thorpe

### \$1,000—\$2,499

Mr. and Mrs. Patrick F. Cannon  
Michele and John Donley  
David and Toni Dunning  
Ms. Debra Floyd  
Gabriela Freese  
Peter R. George  
William E. and Judith P. Greffin  
Matthew Hoffman  
Carol R. McGee  
Robert Miller and Amy Renzulli  
Gregg Neiman  
Julie Overbeck  
Theresa and John Rigas  
Mr. George Sargent  
Hollis and Benjamin Sax  
Anonymous Fund of The Greater  
Cincinnati Foundation  
Nan E. Shirley  
Jon J. Skillman and Luanne E. Selk  
Randall S. Thorne

### \$500—\$999

Tom Alexander  
Mrs. Deborah B Braxton  
Linton J. Childs  
Rebecca and Timothy Doar  
Mr. and Mrs. Paul E. Freehling  
Ms. Vicki Giles  
Richard and Alice Godfrey  
James and Judy Graves  
Rick and Ellen Kuner  
Michael and Nichole Linhardt  
Dr. Yutaka Mizukami  
Andrew and Cynthia Mungerson  
The Mark and Patricia  
Prendeville Fund  
Mrs. Julie Schauer  
Yvonne N. Smith  
Sallie and Mark Smylie  
Clifford C. and Virginia G.  
Sorensen Charitable Trust of The  
Saint Paul Foundation  
Karen Sweeney and  
William P. Janulis  
Ira and Marcia Wagner  
Mr. and Mrs. Royce A. Yeater

## DONOR CIRCLE

These donors contributed cash gifts of \$2,500 or above in 2016.

Celeste M. Adams  
Mr. and Mrs. Richard Gray  
Leslie Haines  
David Hernandez and Tereasa Surratt  
T. Kendall Hunt Family Foundation and  
Patricia D. Hunt  
Bill Kundert and Judi Davenport  
Mr. and Mrs. Paul Laughlin  
Lisa and Ray Lewis  
Mr. and Mrs. Gary McCullough  
Louis and Joan Mercuri  
Muriel Quinn and Robert Pasin  
John M. Raffkin and Anita Levin  
Graham J. Rarity  
Mr. Loren Rogers  
Karen and Don Rosenwinkel  
John W. and Jeanne M. Rowe  
Mr. and Mrs. Michael Small  
H. E. Swantz  
Mr. and Mrs. Thomas Thorpe

## DONORS

**Individual Support - Continued**

**\$250—\$499**

David R. Adler  
David and Gay Anderson  
Ms. Alicia Berg  
Mr. and Mrs. Paul Bessieres  
Ms. Katherine K. Brown  
Bertrum Carroll  
Matthew Davis  
David Fanta  
Mr. and Mrs. Richard Foster  
William French  
Bill & Carolyn Gifford  
Mr. Thomas "Gunny" Harboe  
Barbro and Norman Jung  
Mr. Erik P. Kolz  
Roberta Lee  
Daniel & Tuny Madden & Mokrauer  
James and Carolyn McClure  
Mr. William F. McDonald  
Anthony J. and Dietra  
Delaplaine Millard  
Mr. and Mrs. Dominic Pisani  
Don M. Randel and Carol E.  
Randel Fund  
Mr. Robert I. Selby FAIA  
Steve Sommers  
Curtis Tearte  
Mr. Robert Thomas

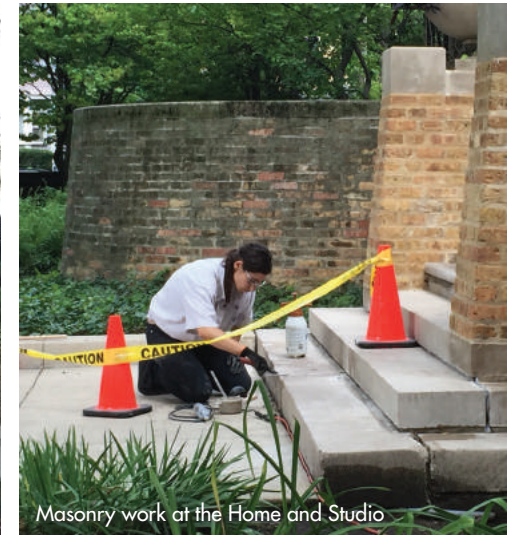
John Vinci  
Carl D. Winberg MD  
Anonymous  
Mr. David Woodhouse  
Mr. Craig Zimmerman

**\$100—\$249**

Mr. and Mrs. Thomas Abrahamson  
Richard & Jennifer Arndt  
Thane K. Arnold  
Dwight D. Austin  
Cherie Balan and Jeffrey Kraus  
Ballor Family Charitable Account  
Christine Bernard  
Sue and Jeff Blaine  
Maria Breen  
Mr. James Brewer  
Elizabeth and Stephen Bruner  
Sarah Calnan  
Ms. and Mr. Adele Cannell  
G. J. Coatsworth  
Mrs. Josephine Connolly  
Mary K. Crane  
Tapas and Judy Das Gupta  
Pam and Patrick Deady  
Mr. and Mrs. William DePriest  
Casey G. DeSalvo



Flying the "W" in celebration of the Chicago Cubs' World Series win



Masonry work at the Home and Studio



Full scale rubbings record condition of Robie windows



Design & Build: Prairie Style workshop at Robie House

**Individual Support - Continued**

Mr. Patrick C. Diggles  
Eugene H. Diggs  
Ramon Durazo  
John Eifler and Bonnie Phoenix  
Anne C. Ferri  
Mr. and Mrs. William J. Ferry  
Katherine Fliflet  
Brian Flora  
Mrs. Lynda P. Fogle  
Mr. Louis B. Fredrick  
Mrs. Rosalie Fruchter  
John and Gloria Garofalo  
Maria Garvy  
Leigh Gates  
Richard Gayle  
Mr. Thomas Gentleman  
Ms. Eileen M. Gorrell and  
Mr. Bill Weaver  
Julie A. Bauer and Paul D. Greenberg  
Ms. Dina Griffin  
Sara Griffiths and Thomas Connell  
Mrs. and Mr. Jade S. Grimms  
Mr. and Mrs. Jeffrey C. Grip, PhD  
Margarete Gross  
Tim Flesch and Tom Gull  
Don Gunning  
Linda and Richard Guzman  
Lois Harb  
Susan and Harry Harsha  
Jo N. Hays  
Mrs. Renee Helfrich

Joan Hull  
Mrs. Marilyn Hund  
Erin Inman  
Mr. Alan D. Isaacson  
Dan and Holly Kaczmarek  
Jacqueline A. Kinnaman and  
Henry Bayer  
Thomas and Elizabeth Kubiak  
Jack Ladinsky  
Jack and Mary Ellen Lesniak  
Mr. and Mrs. John G. Levi  
Ms. Meredith Lewin  
Stewart Macaulay  
Mr. and Mrs. James E. Mann  
Mr. Jay Marquez  
Ed and Martha McGee  
Ms. Betty L. McGhee  
Kent R. Meridith  
Fritz and Fay Michaelis  
Dr. Anthony Montag  
Ms. Lora E. Morrow  
Luigi H. Mumford  
Alicia Murasaki  
Mr. and Mrs. Richard Nichin  
Mr. and Mrs. William Niro  
Sally and Roderick Nott  
Gregory Padgett and Marie Castaneda  
Joan L Pantsios  
Ms. Kathern W. Parker  
Deb and Steven Poe  
Mrs. Suzanne Poeschel

Mr. and Mrs. Daniel Popp  
Dr. Richard Prinz  
Lee and Lori Rafkin  
Mary Beth Roth  
Linda S. Ryan  
Ms. Janet S. Scheevel  
Dawn F. and George R. Schumann  
Deborah Schutz  
Mr. Robert A. Schwartz  
Patrick Schwarz and William Levy  
Mark S. Scott  
John Severns  
Lacey and John Sikora  
Mrs. Kristen Smith  
Janet L. Spearling  
Miss Patricia Stinson  
Ms. Lorna Straus  
Karen Sutherland-Ringstad  
Margaret Teahan  
Mrs. Andrea Thome  
Mr. Mark S. Thorne  
Betty and John Tilton  
Abe & Cheryl Trieger  
Richard Utterback  
Elizabeth Van Wey  
Nancy Waichler  
The Weisman Family  
Mr. Peter Weismantle  
Ms. Liz Winchester  
Mr. Chris Woods



## IN HONOR/MEMORY

### Gifts In Honor

In honor of Anita Levin and John Rafkin	Abe & Cheryl Trieger
In honor of Chris Dorney	Ryan and Tim Eikmeier-Silver
In honor of Christopher Straus	Dr. Anthony Montag
In honor of John Rafkin	Roberta Lee
	Mr. and Mrs. Benjamin Sax
In honor of Warren and Helen Stevens	Sally and Roderick Nott

### Gifts In Memory

In Memory of Grace Staver Rarity

Celeste M. Adams	Ms. Betty L. McGhee
David and Gay Anderson	Marianne O'Donoghue
Maria Breen	Brian and Karen Patterson
Michael Bushman	John M. Rafkin and Anita Levin
Julie Butler	Ms. Selma K. Richardson
Carol Campbell	Catherine Schreiner
Mary K. Crane	Mr. Scott Sichterman
Laura and Christian Dodd	Carol Slick
Katherine Fliflet	Janet L. Spearling
Frank R. Fryer	Thomas Coyle
Erica Gozzi	John Gregg
James and Judy Graves	Lois Harb
Mr. Walter Grimms	J. S. Lowers
Mrs. Renee Helfrich	Kathy J. Moran
Allen Ignacio	Deborah Schutz
Merry Kinzel	Karen Sutherland-Ringstad
John Kvedaras	Curtis Tearte
Mr. Jay Marquez	Elizabeth Van Wey
Ms. Brenda Mauldin	

In Memory of John Thorpe

David and Gay Anderson	Mr. William F. McDonald
Christine Bernard	Margaret and Jerry Norton
Mrs. Deborah B Braxton	Deb and Steven Poe
Mr. and Mrs. John R. Garofalo	John M. Rafkin and Anita Levin
Leigh Gates	Madeleine Raymond
James and Judy Graves	Yvonne N. Smith
Linda and Richard Guzman	Steve Sommers
Mrs. Marilyn Hund	Mr. and Mrs. Thomas Thorpe
Jacqueline A. Kinnaman and Henry Bayer	Mr. Peter Weismantle
Bill Kundert and Judi Davenport	

In memory of Robert Aaron Jones

Ms. Alicia Berg	Kevin Rodgers
Bill & Carolyn Gifford	Mary Beth Roth
Ms. Dina Griffin	Margaret Teahan
Mr. Thomas "Gunny" Harboe	The Weisman Family
Erin Inman	Mr. John Winter
Mr. and Mrs. John G. Levi	Mr. David Woodhouse
Alicia Murasaki	

In memory of William Berberich

Lynn Anderson	Lisa Loerzel
Sarah Calnan	Ruth Ann Rossman
Mr. Thomas Gentleman	Mrs. Kristen Smith
Dan and Holly Kaczmarek	Miss Patricia Stinson

In memory of Dennis Waller

In memory of George Fogle

In memory of Gerald Mungerson

In Memory of Robert N Floyd

In Memory of William F. Ryan

Sandra J. Mangione

Mrs. Lynda P. Fogle

Cynthia Mungerson

Ms. Debra Floyd

Linda S. Ryan

The Trust's members enjoy unlimited access to a world of ideas, travel and historic sites as well as special discounts on programs and merchandise. Members make a difference. Current Society Level members:

### **Skylight Society**

Mr. and Mrs. Robert Feeney  
Mr. Alex Gibson and Ms. Mary Hendrickson  
Mr. Daniel Grangaard  
Mr. and Mrs. James A. Graves  
Mr. Richard L. Hess  
Mr. Loren D. Kaiser  
Susan and John Major  
Mr. and Mrs. Terry Marbach  
Mr. James W. Neupert  
Ms. Julie Overbeck  
Ms. Barbara A. Quilty  
Mr. Loren M. Rogers  
Scott E. Schiave and Anne Hamblin Schiave  
Mr. Thomas R. Schiff  
Drs. Kenneth and Nan Unklesbay  
Ms. Debra N. Walters  
Mr. and Mrs. Thomas D. Whittington

### **Inglenook Society**

Dr. Alvin Bronstein  
Mr. and Mrs. Bill Christensen  
Mr. Howard Cohen and Mrs. Dona Robbins-Cohen  
Mr. and Mrs. Douglas M. Collins

Ms. Debra Floyd  
Ms. Vicki Giles  
Mr. and Mrs. Richard Gray  
Mr. Jason B. Greenberg  
Mr. James S. Hayes and Ms. Catherine Keig  
Mr. and Mrs. H M. Jensen, III  
Mr. Stewart Macaulay  
Dr. and Mrs. Ryan Mayhew  
Mr. and Mrs. Gary McCullough  
Mr. and Mrs. John K. Notz Jr.  
Mr. and Mrs. Jeffrey Petertil  
Mr. J. Sean Plater  
Ms. Patricia S. Schwartz  
Mr. and Mrs. Thomas Thorpe  
Mr. Jack Waters

### **Octagon Society**

Dr. Anne Agee and Mr. Robert Dixon  
Mr. Tom Alexander  
Mr. and Mrs. Chris Baumann  
Mr. Fred Bauries  
Ms. Lee N. Betterman  
Mr. and Mrs. Mark Brandyberry  
Mr. and Mrs. Terrance J. Coleman  
David Coup and David Smith  
Dr. Paul Davis and Dr. Faith Davis  
Mr. James G. Dill Jr.

Mr. and Mrs. John Donley  
Mr. Bill Donnell and Ms. Claudia Daly  
Mr. Dale Eaman  
M. Fainer  
John Patrick Garrett  
Mr. and Mrs. Richard H. Geary Jr.  
Mr. T. Gunny Harboe AIA  
Ms. Margreatha Hein  
Mr. and Mrs. William Hopson  
Mr. Alan D. Isaacson  
Mr. and Mrs. James B. Jurgens  
Ms. MarLen Kaiser  
Dr. Sona Kalousdian and Dr. Ira D. Lawrence  
Ms. Ann M. Krilcich  
Mr. and Mrs. James Linder  
Dr. Nell Lurain and Dr. John R. Lurain  
Marvin Mitchell and Neale Godfrey  
Mr. and Mrs. Scott Moller  
Mr. William B. Neis  
Rhonda and Samantha Pearlman  
Mr. Louis A. Piccoli and Ms. Karen A. Kozlowski  
Karen and Robert Prince-Weithorn  
Mr. and Mrs. Hugh Reardon  
Mr. Dan Ryan  
Mr. Daniel Curry and Mrs. Jennifer Schmidt

Kathryn Sheehan Nesburg and Alan Nesburg  
Mr. David T. Sidney  
Mr. Anthony M. Smyth  
Mr. and Mrs. Timothy Snell  
Mr. and Mrs. Ron Spengler  
Mr. and Mrs. Mark Stampfl  
Mr. Christopher V. Stevenson  
Dr. Christopher Straus and Mr. Curtiss Cohen  
Ms. Marcia Thomas  
Mr. and Mrs. Henry A. Vande Kieft  
Mr. John Vinci FAIA  
Mr. T SnowWolf Wagner

### **Prairie Society**

Carleton of Oak Park  
Dr. Janice L. Miller and Mr. David A. Acton  
Mr. and Mrs. Thomas Adams  
Nancy Adkins and Brant Abrahamson  
Eric and Catherine Allen  
Mr. and Mrs. Ken Allen  
Mary Andrus and Tim Lynch  
Mr. Thane K. Arnold  
Ms. Morgan G. Aronson  
Mr. and Mrs. Thomas Auguste  
Mrs. Marcie Austen

## **SOCIETY LEVEL MEMBERS**



**Prairie Society** - Continued

Ms. Carol Austin	Todd and Cathie Buch	Mr. Thomas Deimel	Ms. Caitlin Fry
Dr. Debera Backhus and Ms. Anna Boyle	Mr. and Mrs. Shad Burkiett	Mr. and Mrs. Michael J. DeLoye	Ms. Barbara N. Fuldner
Mr. Roger Baker	Ms. Barbara J. Byrum	Dr. William Warren and Ms. Martine Derom	Ms. Gaston and Mrs. Keebler
Dr. and Mrs. James E. Banta	Dr. Amr Abdelaziz and Mr. John Calcagno	Dr. and Mrs. Eugene DeSombre	Jennifer Gaw and Krishnan Harihara
Mr. Richard Barker	Mr. and Mrs. Timothy Campbell	Mr. John E. Dieter III	Mr. and Mrs. Jim Irwin
Mr. and Mrs. John Barton	Mr. and Mrs. Howard Cantor	Mr. Eric Dietz	Mr. George Geary and Mr. Neil Bonner
Luke Basic and Sarah Kimmel	Ms. Vera Capp	Mr. and Mrs. Howard Dittmer	Andrea Georgelos and Nathan Gardner
Ms. Andrea Bauer	Anne and Bryce Carmine	Mr. Dennis P. Doordan	Mr. and Mrs. Tony Gerak
Ms. Rebecca Bedell	Mr. and Mrs. David S. Cecchini	Mr. and Mrs. Jon Doucleff	Mr. and Mrs. David Gill
Mr. and Mrs. Roger Behler	Lisa and Richard Cederoth	Mr. and Mrs. Norman W. Douglas	Mr. Donald Goerig
Mr. A. Stuart Bennett	Mr. and Mrs. Cande Celio	Michael Duncan and Carla Bailey	Mr. Barry Gomberg and Ms. Alice Kuhn
Ms. Christina Berben	Mr. Jack Cella and Mrs. Laura Prail	Ms. Mary M. Dunea	Mr. Marc E. Gordon and Mrs. Glenna Lally
Mr. and Mrs. Dale Berns	Ms. Mary Chamberlin	Mr. Stan Ecklund	Lisal and Don Gorman
Mr. John A. Biek and Ms. Christina J. Norton	Mr. Linton J. Childs	Mr. Gregory Eisenstadt	Mr. and Mrs. William Greffin
Mrs. Sharon Bigot	Mr. and Mrs. Jim Choate	Mr. Howard Ellington	Mr. Mark Grenier
Laura and John Bilson	Nancy and Brian Christensen	Mr. Chuck Emick	Sara Griffiths and Thomas Connell
Mr. and Mrs. Norman Bishop	Mr. and Mrs. Robert Christensen	Ms. Bonnie Engel	Mr. Duane Griffus
Dr. Barbara Bayldon and Dr. Joel A. Block	Mr. and Mrs. Roger Christy	Dr. Moshe Engel	Mr. Stephen Groh
Mr. and Mrs. Neal Bobruff	Mr. and Mrs. Edward A. Chuhna	Nilo Erice and Tim Schumacher	Mr. and Mrs. Jeffrey Grohne
Mr. Mort Boland and Mrs. Jennifer Boland	Mr. and Mrs. Vincent Clary	Dr. David Estes	Dr. and Mrs. Fred Guenther
Ms. Heidi Bowlus	Ms. Barbara Clayton	Anita Evans and Leslie Almond	Mr. Steven P. Guild
Mr. and Mrs. Ralph Bowman	Ms. Michelle Clemons	Helen S. Fackler	David Guth and Michael McDeid
Mr. and Mrs. Joe Brackett	Ms. Patricia J Coleman	Mr. and Mrs. Diego Ferro	Mr. and Mrs. Timothy Hagen
Mr. and Mrs. William Brander	Mr. and Mrs. G. Rogers Cooper	Mr. and Mrs. William J. Ferry	Mr. and Mrs. Marcelo Halpern
Mr. Lawrence E. Bray	Dr. Martyn Crook	Mr. and Mrs. Lynn Finley	Dr. and Mrs. David Hancock
Mr. Edward V. Broesamle	Ms. Ellen Darling	Mrs. Lynda P. Fogle	Patricia Hanson and Susan Hertzfeldt
Dr. Kimberly Brown and Mr. Robert Koutek	Ms. Barbara C. Davis	Thomas Fontana and Sagan Lewis	Mr. Phil Straus and Ms. Margaret Harris
Mr. S.T. Brown	Mr. Dave DeCaro	Mr. and Mrs. Tim Foster	Susan M. Harsha
Mrs. Deborah Bruck	Mr. and Mrs. Michael Dedek	Ms. Martha Franklin	Mr. and Mrs. James R. Hartland

**Prairie Society** - Continued

Sandra and Kevin Hartman  
Mr. and Mrs. John Morissette  
Mr. and Mrs. Jason Hennes  
Donna Heroux-Everson and Ray Everson  
Walter Ho and Vanessa Morales Ho  
Mr. and Mrs. Craig Hodson  
Mr. Stephen Hollander  
Kim Holmes and Tim Kaczocha  
Mr. and Mrs. Phil Howard  
Mr. James Howe and Ms. Carol Kamm  
Elizabeth Howland and Dennis Zvac  
Mr. and Mrs. Michael Huskisson  
Linda and Scott Hutchins  
Mr. and Mrs. Randy Hytjan  
Russell Irving and Margaret Linnartz  
Carol Jabs and Alfred Schectman  
Ms. Karin Janik  
Mr. Stephen Jaskowiak  
Mr. and Mrs. Dave Johnson  
Mr. and Mrs. Willis Johnson  
Mr. and Mrs. Eric Jordahl  
Mr. and Mrs. Michael Jorgensen  
Mr. John Judd and Ms. Karen Olesen  
Mr. and Mrs. Norman O. Jung  
Mr. and Mrs. Fred Kamps  
Ms. Quanbeck and Mr. Kaplan  
Ms. Yvonne Katerman  
Mr. Richard Kato  
Mr. John T. Keefe  
Mr. David J. Kelly  
Mr. and Mrs. James Kenton  
Dr. Ginge Kettenbach and Mr. Gerry Kettenbach  
Dr. Katherine Kientzle  
Mr. and Mrs. Robert L. Kinney  
Mr. and Mrs. James Knoedler  
Mr. and Mrs. Jim Koczot  
Dr. and Mrs. Daniel J. Koretz  
Mr. John Krzykoski and Mr. Michael McCreight  
Mr. Amir Lagstein  
Mr. and Mrs. Lou LaGuardia  
Mr. and Mrs. R.D. Lammy  
Mr. and Mrs. Mike Lampkowski  
Ms. Marion Lang  
Mr. and Mrs. David Latz  
Mr. Don B. Leatherman Architect  
Dr. and Mrs. Andrew Lee  
Mr. and Mrs. Richard Leishman  
Robert Lindstrom and Kathy Ehrig  
Mr. and Mrs. William Lipinski  
Mr. Robert Lippert and Ms. Kathleen Dwyer  
Dr. and Mrs. Lou Lombardi  
Mrs. Laura Ludwig  
Dr. and Mrs. Paul Lyons  
Mr. Mark N. Magnuson and Mr. Steven Westfield  
Mr. Robert J. Mahoney  
Mr. and Mrs. Kevin H. Mahoney  
Ms. Vera V. Mainz and Dr. Gregory Girolami  
Mr. and Mrs. Earl Major  
Mr. and Mrs. William Malcomb  
Gloria and Marie Manelis  
Mr. Theodore J. Manzke  
Timothy Markham and Melissa Kelly  
Mr. Scott A. Martin  
Mr. Carlos J Martinez and Dr. Patricia Lechowicz  
Ms. Jennifer Masterson  
Mr. Thomas Matheny  
Ms. Nina Mattarella  
Ms. Tracey McDonald  
Mr. and Mrs. Brad McGee  
Dr. Michelle McKinney and Mr. Byron McKinney  
Mr. Dato' Ar. Zulkhairi Md Zain  
Mrs. Anne Metz  
Kelly and Tom Meyer  
Ms. Elizabeth P. Meyer  
Mr. George I. Meyer  
Mr. John Michael  
Mr. and Mrs. James Mitchell  
Victoria and Rebekah Mogilevsky  
Mr. and Mrs. Leon Moore  
Ms. Anna Morrow  
Mr. Charles J. Prorok and Ms. Marcia L. Mueller  
Mr. and Mrs. Robert F. Mulka  
Dr. Leonard A. Muscolino and Mr. Duane L. Althoff  
Rachael and Gabriel Nass  
Mr. and Mrs. Gregory Neblock  
Mr. and Mrs. Paul Newkirk  
Mrs. and Mr. Cathy Nichin  
Clayton Nightingale and Demetra Smith Nightingale  
Mr. and Mrs. Brad Nogar  
Mr. Joseph Nordsieck and Ms. Melanie Ringer  
Mr. William Northrup  
Gayle Novig and Terry Mahn  
Ms. Jan O'Connor  
Mr. and Mrs. Keith L. Olson  
Dr. John Ortega and Ms. Maila Merced  
Mr. and Mrs. John G. Palko AIA  
Mr. Paul A. Papier  
Drs. Allen and Georga Parchem  
Mr. Brennan Pardee  
Mr. Rohan Paul  
S. J Perlow and Sandra Allen  
Mr. and Mrs. David Perry  
Mr. and Mrs. Martin E. Petroviak  
Mr. and Mrs. Michael J. Phend  
Amy Phillips and Judith Denicola  
Mr. and Mrs. Louis Pignotti  
Mr. and Mrs. Douglas L. Pinney  
Ms. Wilma Plazak and Carey Plazak  
Mr. and Mrs. Tom Pounds  
Ms. Glenna S. Powell  
Mr. and Mrs. Mark T. Prendeville  
Mr. and Mrs. Frank Pride  
Mr. and Mrs. Jaime Ramirez  
Mr. Scott Rand

**Prairie Society** - Continued

Mr. and Mrs. Greg Rechtsteiner  
Mr. Harold Rees and Ms. Emily Culbertson  
Karen Richter  
Mr. Milton J. Robinson  
Mr. and Mrs. R. Michael Robinson  
Ms. Maria T. Roche  
Ms. Deborah Rogers  
Brian and Mary Gail Rohr  
Mr. and Mrs. Gerald A. Role  
Mr. and Mrs. Darryl Rose  
Ms. Jo Ann Ross  
Mr. Marshall Rousseau  
Ms. Patricia Rowland  
Mr. John Royster and Ms. Katie Blesener  
William Roznowski and Christine Laperuto  
Mr. and Mrs. James W. Ryan  
Mr. Robert Rzepka and Ms. Gabrielle Ryan  
Ms. Paula J. Santrach  
Janice and Molee Sarkor  
Ms. Janet S. Scheevel  
Mr. and Mrs. Richard Schlichting  
Mrs. Suzanne and Miss Katharine Schmachtenberger  
Monika and Bjorn Scholz  
Mrs. Mary Jo Schuler  
Mrs. Susan Schwartz  
Mr. and Mrs. Robert Sebastian  
Michael Segall and Joanna Yun-Joo Cheng  
Mr. and Mrs. Scott Shaner

Mr. Dan Sherman and Ms. Michele Hartlove  
Mr. Robert Shuford  
Mr. Andrew Smith  
Dr. and Mrs. Brent Smith  
Mr. James Smith  
Margaret and Randall Snittjer  
Mr. and Mrs. Richard D. Yant  
Ms. Janet Speer  
Dr. and Mrs. Jonathan Spenner  
Ms. Jan Stanton  
Mr. and Mrs. Robert Stanwood  
Mr. Nelson C. Steiner  
Mr. Joe Stephen  
Mr. and Mrs. Ed Stinson  
Mrs. Jody Stokes  
Linda and Thomas Surlak  
Mr. and Mrs. Gregory Surufka  
Ms. Barbara L. Sutton  
Ms. Rita A. Swensson  
Mr. Newton TerMeer  
Vincent M. Territo AIA  
Leslie and John Toepfer  
Mr. and Mrs. Ronald Traub  
Mr. Nicolas Tremblay and Miss Florence Lambert  
Mr. and Mrs. Michael J. Trimbach  
Mr. and Mrs. Richard Trimble  
Ms. Beth Truett and Mr. Armon Haagen  
Mr. and Mrs. Carl Tsuji

Ms. Theresa M. Tyranowski  
Mr. and Mrs. Tom Underwood  
Mr. and Mrs. James Usrey  
Mr. and Mrs. Garry Vaccaro  
Dr. and Mrs. Harry Van Goor  
Mr. Gilbert Vara, Jr.  
Mr. Stephen Ver Halen and Rev. Jane Perkolup  
Mr. and Mrs. George G. Vrechek  
Ms. M.D. Walters  
Mr. and Mrs. Philip Waninski  
Melissa Wells and Charles Lewis  
Mr. and Mrs. Lyn Whiston  
Thomas and Nora White  
Mr. and Mrs. Michael Whitt  
Mr. Ken Wicks and Ms. Carol Wenk  
Miss Colette Wierzbinski  
Rev. Edward D. Wight  
Mr. and Mrs. Kevin Wilkie  
Mr. C. Webb Williams  
Mr. and Mrs. Roy Williams  
Mr. John S. Winn  
Mr. Charles K. Wishmeier  
Ms. Alice Withaar and Ms. Colleen Rader  
Mr. and Mrs. Chuck Wolf  
Mrs. Joy Wood  
Dr. and Mrs. Gabriel Woodruff  
Peter Yankala and Donna Lamm  
Ms. Virginia Yeck

Mr. Steven Young  
Mr. Bernardo Zavattini  
Gale Zemel and David Mausner  
Ms. Lisa M. Zoia





In 2016, 736 volunteers contributed 32,648 hours of service.

They spent 2,520 hours in training and continuing education activities, which included interpreter training for tours at the Home and Studio and Robie House, specialty tour training, and attending the Seminar Series and Enrichment Lectures.

Trust volunteers lead tours, host at events and assist guests at our sites.

## **VOLUNTEERING AT THE TRUST**

Trust volunteers are integral to the success of our tours and operations. Volunteers lead site tours, assist with guests, and support special events and projects. Their commitment allows the Trust to fulfill its mission, and we are grateful for their contribution of time and service.

Joy Aaronson	Irene Balks	Stephan Bitter	Arlene Bunis	Stacey Che	Nikki Conner
Linda Abrams	Janet Barkley	Jack Bizot	Janet Bunn	Lisa Chen	James Conway
Hebah Abu Baker	Daniel Barnett	Carrie Blaine	Pamela C. Reynolds	Marian Chen	David Cook
Brian Alexander	Denia Barrett	Sue Blaine	Lincoln Cairns	Ashley Chiu	Lauren Cooper
Thomas Allen	Tom Barrett	Daniela Blanco	Cathryn Caliendo	Jeremy Chizewer	Rock Corey
Nancy Alpert Yarush	Debby Barron	Linda Blaskovich	Helen Callahan	Jean Christensen	Sarah Corley
Tish Alsom	Karen Barth	Christine Bloom	Howard Campbell	Stacey Christensen	Maria Corpuz
Ann Alspaugh	Lois Barth	Karen Borgstadt	Lee Campbell	Pam Church	Gale Cossey
Sophie Amado	Kathleen Barton	Catherine Boshier	Renee Campbell	Christopher Chwedyk	Tim Cote
Donna Ambrose	Richard Barton	Stephen Bowen	Adele Cannell	Varun Cidambi	Doug Cotsamire
Mark Anderson	Lori Barwick	Maggie Boyaris	Deirdre Cannon	Connor Ciecko	Suzanne Craig
Stephen Andersson	Wes Barwick	Mary Boyaris	Jeanette Cannon	Elena Cincione	Royse Cramton
Kris Anfuso	Sebastian Beaghen	Karen Boyle	Patrick Cannon	Brett Clark	Phyllis Creek
Nellie Angel	Mary Bechtol	Barbara Bozek	Barbara Carlson	John Clouse	Michael Crist
Doris Angell	Debbie Becker	Elizabeth Bozek	Jill Carlson	Sue Cohn	Maureen Crotty
Patricia Angell	Jeanette Becvar	Peg Brandon	Julie Carpenter	Courtney Coke	Debbie Crouch
Carol Ann	Richard Beddome	Joan Brandt	Athene Carras	Susan Colling-Mahoney	Pam Cruz
Thomas Applegate	Hank Bell	Paul Braun	Karen Carreras	John Colucci	Joel Czopek
Megan Arlow	Cynthia Belle	Katherine (Kat) Braz	Ian Carrus	Michael Colucci	Jill Dahl
Jeffrey Arnett	Theresa Benande	Maureen Briza	Kathy Carrus	Philip Colucci	Jill Dahlke
John Arnold	Mildred Benjamin-Smidly	Bruce Broerman	Marie Casteneda	Mary Ellen Conboy	Kimberly Darre
Rebecca Atchley	Tim Bennett	Andrew Brown	Caitlin Castro	Kitty Conklin	Belinda Dartey
Alex Bachhuber	Janyce Bentley	John Bruun	Emma Celio	Jill Conley	Elise Daughhetee
Lauren Bair	Christine Bernard	Larry Bubel	Jay Champelli	Julie Conmy	James Davidson
Anna Balakrishnan	Breanna Bertacchi	Rachel Buccieri	Helen Chang	Michael Connelly	Janet Davis
Cherie Balan	Nick Binotti	Bianca Buczko	Aurelia Chaudagne	Kay Conner	Marion Davis

**Volunteers - Continued**

Miriam Davison	Duane Dowell	Joe Federicci	Sierrane Gatela	Felix Griggs
Christine Day	Vera Dowell	Julie Federico	Leigh Gates	Gayle Grindley
Pam Deady	Peg Dowling	Karen Feeney	Ryan Gates	Margarete Gross
Elizabeth DeBaker	Semin Dracic	Robert Feeney	Joe Gavin	Elizabeth Guevara
Bill Decker	Tom Drebenstedt	Paula Fenza	Roger Geier	Adrienne Guldin
Jill DeCoursey	Dre Dudek	Frehiwet Fera Gebreselassie	Kevin Gerby	Earl Gundelach
Amy DeLamoreaux	Michael Duggan	Kristin Ferguson	Win Gerulat	Don Gunning
Janice Delaney	Karen Duncan	Anne Ferri	Hannah Gibbs	Phyllis Gunning
Amie DeLuca	Becky Dunlavey	Alan Fierst	Deb Giesler	Donna Hachiya
Vicky Demakis	Kathy Durkin	Margaret Fink	Ted Giesler	Courtney Hack
Sally Dempsey	Kathleen Durkin	Neil Fitzgerald	Art Gilfand	Jacob Hagan
Sareena Denis	Kathy Durkin	Brian Flora	Grady Gillan	Sally Hakes
Sarrena Denis	Francine Dzuryak	Liz Flynn	Ruth Glaberson	Lois Hall Merrill
Laurie Des Jardine	Linda Eales	Dorothy Foley	Marge Gockel	George Hallenbeck
Douglas Deuchler	Trudi Eblen	Alicia Fontanetta	Amy Godino	Sandi Ham
Brian DeVinck	Leila Edwards	Gabriela Freese	Donna Goetz	Margaret Hamilton
Renna Diamond	Mary Egan	Judith Frei	Janina Golab	Frank Hankins
Mike Dianich	Jack Eilrich	Lawrence Frey	Casey Gold	Joanne Hannum
Felix Diaz	Hanna Eimiller	Linda Frey	Derrick Golon	Kathy Hansen
Rebecca Doar	C.L. Elliott	Gretchen Frickx	Dawn Gonzalez	Stacey Harloe
Keith Dobberfuhl	Ann Ellis	April Frierson	Laurie Goodey	Russell Harper
Lisa Dodge	Mark Engelen	David Frost	Herb Gordon	Charles Harrington
Carol Dohr	Pam Erickson	Susan Frost	Martin Goulbourn	Bob Hartnett
Scott Dohr	Peter Erickson	Rosalie Fruchter	Sabrina Granados	Sylvan Hartshorn-Bunis
Debbie Donahue	Ronaine Erickson	Karen Furlong	Cliff Gray	Crystal Harvey
Denise Donald	Gwen Evans	Lora Gabowski	Diane Gray	Christine Hauri
Patrick Dooley	Connie Fairbanks	Paul Gajda	Nancy Greco	Kathryn Hausman
Sharon Doty	Michael Farley	Linda Gallagher	Paul Greenberg	Jo Hays
Anne Douglas	Andrea Farrell	Mary Galligan	Wendy Greenhouse	John Heidbreder
Ali Dowd	Ann Fastert	Mario Gascon	Geof Greer	Judith Heineman



Peg Zak, recognized for 40 years of service and Frank Pond, recognized for 35 years

Lynn Hemberger  
 John Hembling  
 Judy Hembling  
 Kelly Hendrickson  
 Mitch Hendrickson  
 Janine Henry de Frahan  
 Harold Hering  
 Janelle Herr  
 Mike Hettinger  
 Dottie Hetzel  
 Alexis Hiller  
 Jerry Hills  
 Gail Hofmann  
 Ray Hofmann  
 Sharon Hoisington  
 Eileen Holderbaum

**Volunteers - Continued**

Clifford Hollander	Mary Kaleta	Alma Koppedraijer	Rita Lavin
Elizabeth Holley	Joan Kallas	Dorothy Koppel	Barbara Lawrence
Liz Holt	Merritt Kanan	Cheryl Koselke	Ted Lawrence
Jeanne Hoogerhyde	Victoria Kane	Diane Koselke	Jonathan Leck
Elisabeth Houston	Steven Karlowski	Nopparat Kositthanasarn	Grace Lee
Gary Howell	Paula Kavchak	Ivan Kostadinov	Helen Lee Reid
Debra Hruby	Linda Kaye	Amanda Kowalski	Richard Leja
Mike Hruby	James Kelly	Michele Kowalski	Virginia Lennon
Michelle Humes	Johanna Kelly	Vincent Kowalski	Carrie Leshyn
Natsuko Imamura	Blair Kelty	Mitch Koziol	Jack Lesniak
Doug Irvin	John Kelty	Margaret Kral	Corrine Lettier
Harukuni Ishikawa	Sue Kelty	Ray Kratzer	Donna Lettier
Sean Jackson	Jean Kengott	Marie Kruse	Janice Lewis
Mary Jane Linke	Lawrence Kengott	Mark Kruse	Jeff Limberg
Alyssa Jaracz	Michael Kennedy	Lisa Krzeczowski	Kathy Lobato-Martinez
Ed Jarger	Paul Kenworthy	Lori Krzyzewski	Timothy Loftus
Linda Jebavy	Kris Kertgen	Shirli Kubiak	Beth Logan
Jane Jedlicka	Zoe Kilavos	Don Kumler	Perla Londres
J. John Dzuryak	Jacqueline Kinnaman	William Kundert	Cristina Lorie
Gert Johnson	Kathie Kinnaman	Ellen Kuner	Kerith Luchins
Mary Johnson	William Kirchner	Barbara Kurth	Aubrey Lutz
Penny Johnson	Madeline Klees	Rick Kwarciany	Jessica Luzar
Wayne Johnson	Steven Klimczak	Vicki Kwarciany	Char Lyn
Janis Johnston	Dennis Kmiec	Barbara Kwiatkowski	Heather MacGregor
Margaret Jones	Laurie Knasel	Eric Labanauskas	Daniel Madden
Laura Jordahl	Laura Knitt	Karen Larsen	Karen Madden
Christine Junious	Rick Koepke	Richard Larsen	Thomas Malcolm
Doug Kaarre	Nelson Koga	Greg Larvis	Darrick Malone
Andy Kaczowski	Leo Koonmen	Michael Lavery	Susan Maltese



Debbie Crouch presented the 2016 Catherine McLoughlin Award for Hospitality to volunteer Felix Diaz.

Sandra Mangione	Jeffrey Mathe
Pamuella Mann	Denise Mavity
Nick Marchio	Thomas Maxson
Alan Maresso	Deborah Maxwell
Tom Marhevko	Katie Maxwell
Ann Marohn	Gene McCormack
Ruth Martin	Bill McDonald
Martha Martinez	Eloise McDowell
Sam Marts	Steve McFarlin
Joe Maschek	Abby McGovern
Marcia Matavulj	Lisa McGovern

**Volunteers - Continued**

John McGraw	Dave Morris	Angela Novak	Cristina Petrea	Michael Robins
Katie McGuire	Darnella Mosley	Martina Novak	Cheryl Phillips	David Robson
Chuck McLaughlin	Justin Mottier	Polly Novak	Tom Phillips	Irma Rodriguez
Karen McLean	Rachel Much	Jan Novak Dressel	Don Pielin	Mary Roeing
Mary McLeod	Maryann Muggleston	Bruce O'Brien	Bonnie Piest	Barb Rohm-Rossa
Jerry McManus	Carolyn Mulac	Mary Ocasek	Ericka Pistorius Stamper	Hiram Roman
Rick McNees	Susan Mullen	Erin O'Donnell Clark	Renee Pleshar	Ron Roman
Joyce Meddaugh	Alana Murphy	Robert Olney	Suzanne Poeschel	Jerry Rosenthal
Dick Meister	John Murphy	Eric Olson	Mike Poirier	Cynthia Ross
Joan Meister	Mary Murphy	Susan Olson	Frank Pond	Lance Royce
Aura Mena	Roselen Murphy	Virginia Opitz	Terry Poppleton	Lynne Ruch
Randi Merkel	Dave Musser	Rob Oppenborn	Kay Poyner Brown	Heidi Ruehle-May
Bill Merrill	Matthew M. Nagel	Susan Oppenborn	Mike Prendergaast	Janet Sabri
Elizabeth Metcalfe	Lisa Napoles	Frank Orto	Damien Qualls	Sean Sabri
Fritz Michaelis	Jon Napolitano	Kimberly Oser	Howard Raik	Chettha Saetia
Carol Michelini	Praveena Narasimhan	Rosemary O'Shea	Alan Raphael	Maureen Saetia
Kimberly Mikuta	Steven Narsutis	Ute Osmers	Madeleine Raymond	Kim Sargent
Doreen Miller	Jim Nedza	Heidi Oxford	Nancy Reeder	Bradley Schaffer
Lynn Miller	Lynn Neils	Gregory Padgett	Linda Reeve	Cynthia Schaffer
Jerry Milligan	Brett Nerstrom	Shelley Paine	Peter Reidy	John Schaffer
Joyce Minich	Rebecca Nerstrom	Gary Palese	Karl Reko	Julie Schaffer
Adan Miranda	Maggie Nevrlly	Marshall Palley	Ruth Reko	Liz Schares
Bill Miston	Philip Neznanov	Georgine Panko	Susan Remington	Genie Schauerte
Chris Mlynarczyk	Lourdes Nicholls-Kaczkowski	Joan Pantsios	Cecilia Resende-Santos	Jeff Schertz
Claire Mokrauer-Madden	Pam Niesluchowski	Edward Pariser	Dan Reynolds	Erin Schettler
Tim Mole	Daniel Nojiri	Carol Patterson	Mirella Ribauda	Ariel Schick
Rocio Monge	Jill Nojiri	David Patterson	Dovile Riebschlager	Jean Schlinkmann
Emily Monk	Samijejan Nordmark	Barbara Pearson	Tony Riley	Bryan Schneider
Susan Montgomery	Leona Norris	James Peters	Rose Rittenhouse	Mary Schnurr
Debra Moon	Gary Northrup	Faith Peterson	Eileen Robbins	Joel Schorn



Volunteers celebrate 5 years of service with the Trust

Peter Schramm AIA  
 Lisa Schrenk  
 Jerrold Schulkin  
 Walter Schweiger  
 Ronnie Schweit  
 Mark Scott  
 Helen Scotty' Moorman  
 Sam Scriba  
 Janice Serafini  
 Brian Sharpe  
 Valerie Sherman  
 Ross Simmons  
 Marie Simonetti  
 Ken Simpson  
 Madonna Sivwright  
 Carolyn Skipper  
 Robbie Skoronski  
 Nancy Skowronski



**Volunteers - Continued**

Deb Sloan	Mark Sukowski	Julia Voight	Carolyn Williams
Dan Slouka	Teri Sullivan	Janet Volk	Michael Williams
Kristina Smith	Carol Sweder	Liz Voorhis	Andria Wilson
Robert Smith	Ken Sweder	Joyce Voss	Janina Wimunc
Yvonne Smith	Chrissy Sweeney	Mary Wacker	Josephine Wimunc
Edward Solan	Dan Sweeney	Anita Walag	Jonathan Wlodaver
Linda Solan	Maria Sweeney	Jana Wallace	Simone Wright
Miguel Solorio	Martha Sydanmaa	Lawrence Wallace	Peter Yankala
Josie Sommers	Mark Szyndrowski	Ellen Walsh	JeNell Yoka
Steve Sommers	Jeanne Takami	Jack Walsh	Charles Young
Judy Sora	Vivian Tedford	Debra Walters	Martha Yount
John Sosnowski	Richton Thomas	Lauren Waninski	Thomas Yun
Gavin Souter	John Thorpe AIA	Linzy Waters	Terry Zachata
Norman Spielman	Jessica Thurk	Barbara Watkins	Peg Zak
Michelle Springer	Tim Thurlow	Roseanna Watson	Frank Zarate
Jan Stanton	John Tielsch	Terrence Watson	Anita Zeken
Lois Starbuck	Betsy Timm Newton	Samuel Watters	Yinna Zhang
David Staskowski	Cynthia Tom-Klebba	Beverly Weable	
Marianne Stefanski	Pat Trafton	Katelyn Weil	
Rozanne Stevens	Elizabeth Trumbull	Michael Weiland	
Michael Stewart	Denise Trylovich	Steven Weis	
Val Stewart	Sharon Tucker	Adam Welter	
Kelsey Stimple	Theresa M. Tyranowski	Liz Welter	
Joan Stockmal-Gordon	Richard Uebele	James White	
Amy Stojkovich	Marie V. Olmos	Elbert Whitfield	
Ceece Straney	Sherry Vale	James Wicks	
Amy Stricker	Nate Vandenbrook	Anna Wight	
Kathy Stricker	Catherine Varnas	Pat Wilkinson	
Kimberly Stupar	Carrie Vasquez	Amanda Willard	
Collin Sugg	Mary Villarreal	Barbara Willard	



Bill Kundert presented the 2016 Wallis Austin Outstanding Volunteer of the Year Award to volunteer Tim Bennett.

Statements of Financial Position – December 31, 2016 and December 31, 2015  
 Statements of Activities – For the Years Ended December 31, 2016 and December 31, 2015

**STATEMENTS OF FINANCIAL POSITION**

<b>ASSETS</b>	<b>DECEMBER 31, 2016</b>	<b>DECEMBER 31, 2015</b>
Cash & Cash Equivalents	963,084	1,063,846
Accounts Receivable	2,324	51,493
Grants & Pledges Receivable, net	250,258	149,967
Inventory	402,636	443,678
Prepaid Expenses	104,705	76,497
Property & Equipment	3,394,374	3,548,892
Cash Held for Investment	37,298	37,298
<b>TOTAL ASSETS</b>	<b>5,154,679</b>	<b>5,371,671</b>
<b>LIABILITIES</b>	<b>DECEMBER 31, 2016</b>	<b>DECEMBER 31, 2015</b>
Accounts Payable	89,653	97,264
Accrued Expenses	106,786	108,912
Deferred Income	228,150	346,231
<b>TOTAL LIABILITIES</b>	<b>424,589</b>	<b>552,407</b>
<b>NET ASSETS</b>	<b>4,730,090</b>	<b>4,819,264</b>
<b>TOTAL LIABILITIES &amp; NET ASSETS</b>	<b>5,154,679</b>	<b>5,371,671</b>

**STATEMENTS OF ACTIVITIES**

<b>REVENUES</b>	<b>YEAR ENDED DECEMBER 31, 2016</b>	<b>YEAR ENDED DECEMBER 31, 2015</b>
Memberships	186,950	167,413
Contributions	396,010	344,202
Grants	168,382	120,581
Tours & Education	2,868,989	2,882,913
Merchandise Sales	2,290,130	2,356,302
Special Events	86,432	92,412
Investment Income	1,151	2,020
Licensing Revenues	1,765	458
Miscellaneous	8,014	2,452
In-kind Donations	235,867	252,526
<b>TOTAL REVENUES</b>	<b>6,243,690</b>	<b>6,221,279</b>
<b>EXPENSES</b>	<b>YEAR ENDED DECEMBER 31, 2016</b>	<b>YEAR ENDED DECEMBER 31, 2015</b>
Program Services	3,473,054	3,749,236
General & Administrative	1,113,418	1,017,752
Fundraising	597,866	367,119
Cost of Sales	1,148,526	1,196,524
<b>TOTAL EXPENSES</b>	<b>6,332,864</b>	<b>6,330,631</b>
<b>INCREASE (DECREASE) IN NET ASSETS</b>	<b>(89,174)</b>	<b>(109,352)</b>
NET ASSETS BEGINNING OF PERIOD	4,819,264	4,928,616
NET ASSETS END OF PERIOD	4,730,090	4,819,264

**FINANCIAL STATEMENTS**

---

The Frank Lloyd Wright Trust is a Chicago-based 501(c)3 that operates at five Wright-designed sites and a merchandise center. The Trust was founded and incorporated as a State of Illinois not-for-profit on June 17, 1974.

---

CENTRAL OFFICES

**The Rookery**

209 S. LaSalle Street, Ste 118  
Chicago, IL 60604  
312.994.4000

FRANK LLOYD WRIGHT

HOME AND STUDIO

951 Chicago Avenue  
Oak Park, IL 60302

UNITY TEMPLE

875 Lake Street  
Oak Park, IL 60301

FREDERICK C. ROBIE HOUSE

5757 S. Woodlawn Avenue  
Chicago, IL 60637

EMIL BACH HOUSE

7415 N. Sheridan Road  
Chicago, IL 60626

[flwright.org](http://flwright.org)