



# ANNUAL REPORT

January 1 – December 31, 2018



Frank Lloyd  
Wright Trust

[flwright.org](http://flwright.org)

## **MISSION**

---

The mission of the Trust is to engage, educate and inspire the public through interpretation of Frank Lloyd Wright's design legacy and preservation of his original sites for future generations.

## **CORE VALUES**

---

### **ENGAGEMENT**

Engaging a broad and diverse local, regional, national and international audience through a dynamic cultural tourism program, a comprehensive and interactive website, and consistent marketing and communications initiatives.

### **EDUCATION**

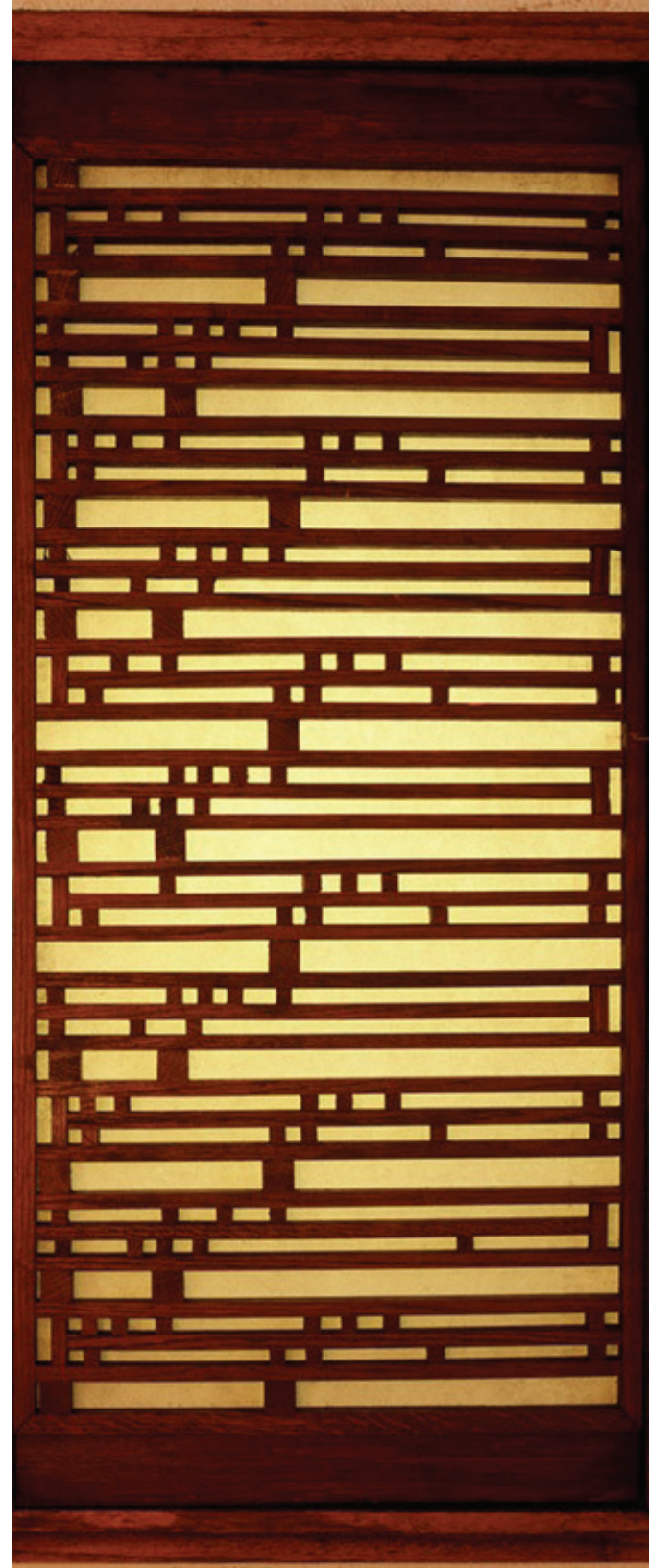
Affirming the contemporary relevance of Wright's design legacy by educating K-12 students through innovative design programs that nurture individual vision; by presenting quality adult enrichment programs, national/international travel programs; and by producing electronic/print publications.

### **INSPIRATION**

Inspiring our audience through powerful aesthetic experiences of authentic Wright sites, preserved to Wright's original design vision.

### **FOR FUTURE GENERATIONS**

Developing the Trust's resources and maintaining the Trust's financial stability in order to sustain Wright's original sites for future generations and ensure a lasting and secure future for the Trust, supported by strong community and business relationships and by dynamic Board engagement.





Mission and Core Values .....	2
Letter from the Chairman of the Board .....	4
Report of the President and CEO .....	5
2018 Wright Night.....	12
2018 Housewalk.....	13
Staff.....	14
Education: Teachers and Families.....	15
Internship Program .....	16
Audience Information .....	17
In Partnership with the Community .....	18
Foundation and Business Contributors .....	19
Donors .....	20
Society Level Members .....	24
Volunteering at the Trust .....	30
Financial Statements .....	35

Cover Image: Living room leaded-glass doors, Robie House. Photo: James Caulfield  
 Image (left) Photo: Donte Tatum.

# TABLE OF CONTENTS

## DEAR MEMBERS AND FRIENDS

2018 was a year of preservation activity at Robie House for the Trust. In order to remain open to the public during restoration, work was divided into two phases. The west side of the house was restored in Phase 1 from January to August. Visitors touring Robie House were able to observe preservation in action through clear plexiglass walls installed at the thresholds to the main floor living room and ground floor billiard room.

In addition, cameras recorded special skill work, such as lime putty plaster installation and multi-layered coloration. Videos of these phases were produced and presented on the Trust's website to allow our national and international audiences to track the progress of the restoration and learn about the special nature of materials constituting the design of Wright's iconic Prairie-style house.

Phase 2 from August 2018 through February 2019 addressed the east side of the house and concluded with installation of cleaned and restored woodwork, light fixtures, and selected leaded-glass windows and doors. Original furniture owned by the Trust and furniture on loan from the University of Chicago completed the full round of interior and exterior

restoration, and Robie House was once again made whole in Wright's original vision.

Work on the Robie House restoration spanned 10 years, with intermittent pauses for additional fundraising that finally reached a total of \$11 million. We owe profound gratitude to the Robie Restoration donors listed on page six. Their commitment was crucial to the completion of this important work and we are pleased to recognize them.

During this year of focus on Wright's Robie House, the Trust smoothly carried on its many other regular programs and activities. For the accomplishments of an outstanding year, let me thank all of our Board members for their steadfast support, our Trust members and friends for their loyalty, and our staff and volunteers for their expertise and dedication to the Trust's mission.



Chairman of the Board of Directors

## BOARD OF DIRECTORS 2018

JOHN M. RAFKIN, CHAIRMAN OF THE BOARD  
ROBERT MILLER, VICE CHAIR AND CHAIR,  
EXECUTIVE COMMITTEE  
DAVID DUNNING, TREASURER  
GRAHAM J. RARITY, SECRETARY

PETER R. GEORGE  
DAVID HERNANDEZ  
PATRICIA HUNT  
KURT NEUMANN  
ROBERT PASIN  
DON ROSINWINKEL  
KELLY SMALL  
RANDALL S. THORNE



John Rafkin, 2018 Chairman, Board of Directors

## LETTER FROM THE CHAIRMAN OF THE BOARD

Conceived as a total work of art in which all the elements combine in one unified vision, the Robie House represents an original, complete reinterpretation of American domestic architecture. In its sensitive handling of materials, remarkable attention to interior detailing, and integrated treatment of ornament, the building exhibits a fundamental respect for nature as the source of all architectural form. Wright's innovative treatment of open-plan living spaces in the Robie House established a new direction for 20th century architecture. The expansive living space at the heart of the Robie House presents a new sense of freedom and openness designed for the American family, and is reflective of a modern, democratic American society. Wright's enduring legacy of Organic Architecture, as presented in the Robie House, is a highly innovative approach to architecture that abandoned European influences to create a purely American form in harmony with man and nature, fully integrated with all its constituent parts, and embodying American society from the inside out. ...The building provides an authentic experience of Frank Lloyd Wright's design vision for a new American architecture.

*Frank Lloyd Wright's Prairie Vision:  
The Frederick C. Robie House Conservation Management Plan*

## REPORT OF THE PRESIDENT & CEO

*“Robie House established  
a new direction for 20th  
century architecture.”*



Celeste Adams at Robie House

The Frank Lloyd Wright Trust recognizes with gratitude these donors who have generously supported restoration of the Frederick C. Robie House:

\$1 MILLION+

Alphawood Foundation Chicago  
Pritzker Foundation  
State of Illinois

\$500,000+

Hickory Foundation

\$250,000+

National Trust for Historic Preservation  
United States Department of the Interior  
Walton Family Foundation

\$100,000+

The Meijer Foundation  
John and Jeanne Rowe  
Tawani Foundation

\$50,000+

Friends of Heritage Preservation  
The Getty Foundation  
Richard and Mary L. Gray  
Stanley Kleinstein Trust  
Lars and Mary Lofgren  
Viñoly Family Foundation

\$25,000+

Anonymous  
Bulley & Andrews  
Norman and Edna Freehling Foundation  
John and Sue Major  
Pamela Mensch  
John M. Rafkin and Anita Levin  
Francis and Lorna Straus  
Andy Warhol Foundation for the Visual Arts

\$10,000+

Alan and Nancy Berry  
The Brinson Foundation  
John and Kathleen Buck  
Seyda and Necdet Ersoy  
Joan and Robert Feitler  
Celia Finsel  
Jim and Judy Graves  
Yoko Ono  
Don and Karen Rosenwinkel  
Scott and Anne Hamblin Schiave  
Michael and Kelly Small  
South East Chicago Commission



Detail, Robie House lighting fixture

*Photo: Mike Moenning*

This year as restoration of Robie House continued in public view and neared completion, the Trust produced a Conservation Management Plan that defines and articulates in detail the preservation of Wright's iconic Prairie House for future generations. Funded by the Getty Foundation's *Keeping It Modern* initiative, the plan includes a vision statement for preservation, a definitive history of the building, a summary of its cultural significance, guidelines for programs and use, and conservation policies that address materials and treatments in every aspect of the house following a ranking system of significance for each area. Technical research and analytic studies of the building are also included in the plan. It is the most comprehensive study of Robie House yet published.

As part of the assessment of cultural significance, the Trust conducted an audience survey to better understand the value that the public places on Robie House. The 870 respondents identified themselves by selecting Hyde Park resident, Chicago resident, national/international visitor, or preservationist.

The cumulative result of the survey selected the following values in sequence by choice.

- 1.) Reflection of the Midwest Prairie – Prairie Style
- 2.) Wright Building Open to the Public
- 3.) Design Innovation and Technical Ingenuity
- 4.) Revolutionary Break with Prior Architectural Styles
- 5.) Modernism and Beauty of Design
- 6.) Americanism and Landmark Status
- 7.) International Fame as an Architectural Icon

## REPORT OF THE PRESIDENT & CEO



*Photo: Mike Moening*



*Photo: James Caulfield*



*Photo: Mike Moening*

From this survey we learned that the general public recognizes the significance of Prairie Style and its association with the American Midwest. Also significant is the public recognition of Wright as an innovator rather than a rebel. Particularly satisfying was the highly ranked value of Robie House as “open to the public,” a commitment the Trust has continuously honored during its 20-year stewardship.

Growing our website resources, the Trust launched a new online series of digital animations titled, *Frank Lloyd Wright: The Lost Works, Demolished and Unrealized Buildings*. Funded by the MacArthur Foundation, Wright’s 1904-06 Larkin Administration Building in Buffalo, New York, which was demolished in 1950, commenced the video series with 26,800 viewers of the film in 2018. The Larkin Building commission went to Wright at the urging of his friend Darwin Martin, the company secretary who also commissioned Wright to design his Prairie-style home.

Future subjects in the series will include the Imperial Hotel, 1917-1923 (demolished in 1967), and Midway Gardens, 1913-1914 (demolished in 1929).



Rendering of Larkin Administration Building interior



Rendering of Larkin Administration Building exterior

# REPORT OF THE PRESIDENT & CEO



The 2018 Wright Plus event began with a Thursday evening Cocktail Reception and Silent Auction in the Light Court of The Rookery downtown, where the Trust central offices are located. Co-chaired by Patty and Ken Hunt, the festive event drew over 160 guests and raised a record-shattering \$120,000 for Trust education and preservation programs.

The Wright Plus Saturday Housewalk was a crisp spring day with a line-up of unique houses, including Wright's beautiful Peter and Emma Beachy House on Forest Ave. near the Home and Studio. During the housewalk, Trust members enjoyed an oasis break at the Tallmadge & Watson First United Methodist Church, and guests enjoyed picnic lunches and shopping in the Home and Studio courtyard. Over 450 talented volunteers were out in force, making the walk an unforgettable experience for our guests – a day of friendship and hospitality that distinguishes this legacy Oak Park / Trust partnership event.

Serving as a gateway to Wright's Chicago for visitors from around the U.S. and the world, the Trust's 2018 visitation to five area sites totaled over 147,000 with our website visitation at 561,250 unique visitors and 2,650,000 page-views.



## REPORT OF THE PRESIDENT & CEO

In 2018, the Trust's signature program: *Thinking into the Future: The Robie House Series on Architecture, Design and Ideas* featured Mark Sexton of Kreuck+ Sexton speaking on the firm's collaborations with artists, such as Jaume Plensa on Crown Fountain in Millennium Park and cutting edge projects such as the Spertus Institute on Michigan Avenue.

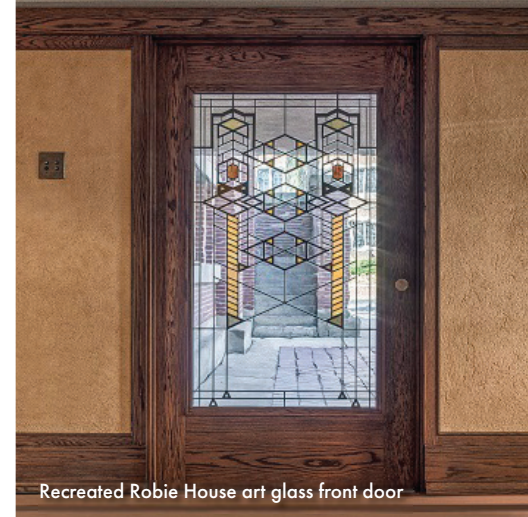
In education, the Trust's initiative *Teaching by Design* went live online as a new educators' website **teachingbydesign.org** with 6,250 site visitors to date. The website provides quality design-based resources that nurture individual vision and creativity. Fifty downloadable lesson plans are aligned with STEAM goals and emphasize cross-curricular themes.

A partnership with the University of Chicago Lab Schools engaged elementary school students in a Robie House Design Lab, which included a hands-on tour of Robie House to learn about the restoration process and follow-up studio session in a Gordon Parks Arts Hall studio. Through the Lab Schools' Summer Links program, high school students interned at Robie House, working in the Trust's education program.

As Robie House entered its final phase of interior restoration, the Trust opened a new gallery on the third floor of the house to display original furniture by Frank Lloyd Wright. In an exhibition titled *Designs for Modern Living*, the Trust combined furniture in our own collection with works on loan from the Smart Museum of Art at University of Chicago. In conjunction with the exhibition, the Trust acquired a Peacock side chair, designed by Wright for the Imperial Hotel. The exhibition was cross-marketed with a concurrent exhibition at the Driehaus Museum, *The Art of Seating: 200 Years of American Design*, which included chairs by Frank Lloyd Wright.

This year's reemergence of Wright's original vision at Robie House attracted widespread attention with the recreation of signature built-ins, such as the living room Inglenook and bookcase with its original leaded-glass doors, subtle autumnal coloration and textures of the wall resurfacing, and light fixtures recreating the original light and shadow patterns of each room. The Trust exactly recreated the Woodlawn Avenue iconic front door, demolished during campus riots of the 1960s.

## REPORT OF THE PRESIDENT & CEO



Recreated Robie House art glass front door

Photo: James Caulfield



Mark Sexton and John Rafkin



Guests at the lecture's reception



Sexton speaks at the University Club of Chicago

Photos: Mike Moenning

During 2018 the Trust advanced its mission “to engage, educate, and inspire” in a year of important historic restoration and educational programming in step with current standards. Looking to a future of continuing service to the community, the Trust began internal planning for future expansion of its operations at the Home and Studio in the years ahead. Board members and key staff considered future needs of the Oak Park site to keep pace with museum practice in tour operations, education, community engagement, and next generation orientation to Wright’s legacy.

To our kind and generous donors, thoughtful and talented Board members, devoted staff, and faithful volunteers, all of whom together constitute this great organization, a heartfelt thanks and deep appreciation for the individual commitment that is required to create our shared success story.



Celeste Adams,  
President & CEO



Entering the Robie House Living Room

*Photo: James Caulfield*



Wright Plus attendees enter the Rollin Furbeck House

*Photo: Anne Evans*

# REPORT OF THE PRESIDENT & CEO



**Wright Night 2018**

**Honorary Committee**

(First row, L to R: Michael Small, Kelly Small, Lisa Lewis, Co-chairs Patty and Ken Hunt, Muriel Quinn, and Kevin Donovan. Second row, L to R: Ray Lewis, Mary Jane Neumann, Kurt Neumann, Jeanine George, Peter R. George, Graham Rarity, John M. Rafkin, Robert Pasin).



Volunteer Bill McDonald gives tours



Wright Night co-chairs Ken and Patty Hunt



The Hunts welcome all to Wright Night

*Photos: Donte Tatum*

**WRIGHT NIGHT 2018**



The Herman W. Mallen House



A terrific Wright Plus day brought guests of all ages to historic Oak Park on Saturday, May 19. This year's architectural housewalk featured a lineup of homes that included Wright favorites and magnificent residences by his contemporaries. Members received shopping discounts and special access to an oasis at the First United Methodist Church of Oak Park. The day brought new discoveries and forged lasting friendships.



Guests plan their day



The Charles E. Roberts Stable



Guests enjoy the day

Photos: Anne Evans

# 2018 WRIGHT PLUS HOUSEWALK

## ADMINISTRATION

Celeste Adams	President & CEO
Rich Nichin	Director of Finance
Susan Harris*	Human Resources Manager
Kathleen Francis	Staff Accountant
Rebecca Girard	Administrative Coordinator & Central Office Manager
Phyllis Walker	Accounting Assistant

## COMMUNICATIONS

Zarine Weil	Director of Communications
Christine Trevino	Associate Manager, Communications
Sandy Ho*	Creative and Graphic Design Manager

## DEVELOPMENT

Thomas Gull	Director of Development
Lise Braithwaite	Manager, Annual Giving and Events
JoEllen Narsutis	Membership and Donor Database Coordinator
Sylvia Schveri*	Assistant Director of Development

## COLLECTION AND PROGRAMS

David Bagnall	Curator and Director of Interpretation
Risa Sekiguchi Vuillemot*	Travel Manager

## EDUCATION

Kim Scata	Senior Manager for Education
Kathryn Grindley	Home and Studio Educator

## FACILITIES

Karen Sweeney	Preservation Architect and Facilities Director
Patrick Gronck	Caretaker
Michael Wait	Home and Studio Preservation Technician
Erick Collier*	Preservation Technician
Omar Evans*	Home and Studio Housekeeper
Samantha Stallings*	Preservation Assistant

## INFORMATION AND TECHNOLOGY

Ahnquajj Kahmanne	Director of Information Systems Technology
Danny Yuen	Website Administrator & Interactive Designer
Karen Malone	IT Systems Assistant

## GUEST RELATIONS

Christina Ruscitti	Director of Tour Operations and Guest Experience
Mark Campbell	Home and Studio Daily Operations Manager
Joseph Barrett	Robie House Daily Operations Manager
Linda Bonifas-Guzman	Volunteer Resources Manager
Angela Whitaker	Wright Plus Coordinator
Daniela Blanco	Guest Relations Representative & Manager on Duty
Taylor Behary	Unity Temple Daily Operations Manager
Madeline Mason	Rookery Receptionist & Guest Relations Manager on Duty
Elizabeth Metcalfe	Guest Relations and Volunteer Coordinator
Amanda Konkol	Guest Relations and Volunteer Coordinator
Megan Koeller	Guest Relations Representative & Manager on Duty
Theresa Dunne	Guest Relations Representative & Manager on Duty
Rita Williams*	Guest Relations Representative
Carol Herbstritt*	Guest Relations Representative
Lorraine Barger*	Guest Relations Representative
Alexia Tillman*	Guest Relations Representative
Amanda Jones*	Guest Relations Representative
Brittany Yelinek	Administrative Manager, Shop Wright Stores
Kailee Lowry	Sales Manager, Home & Studio Museum Shop
Diane Kittredge*	Museum Shop Sales Representative
Kristen Lopez	Sales Manager, Robie House & Rookery Museum Shops
Randolph Mical*	Museum Shop Sales Representative
Constance Toebe*	Museum Shop Sales Representative
Emma Pierce	Museum Shop Sales Representative
Denise Gonzalez*	Museum Shop Sales Representative
Sam Scriba*	Museum Shop Sales Representative

## MULTI-CHANNEL RETAILING

Jason Gums	Merchandising Manager
Michelle Foland	Direct Sales Administrator
Steve Cothard	Merchandise & Fulfillment Coordinator

\* part-time

## STAFF (AS OF DECEMBER 31, 2018)



The Frank Lloyd Wright Trust presents K-12 arts education programs for children and families at its historic sites, and through its partnerships with local schools and community organizations throughout the year. In 2018 the Trust provided programming for more than 3,500 participants in the Chicago metropolitan area, one of which was *Robie House Design Lab*, a design-based workshop presented in partnership with the University of Chicago Laboratory Schools.

Thanks to generous support from the Terra Foundation for American Art, the Trust's *Teaching by Design* website was able to provide numerous design-based resources for teachers to use with students worldwide. In its first year, *Teaching by Design* received 4,635 educator registrations from individuals in more than 1,000 cities in 117 countries.

2018 marked the 15th year in partnership with Oak Park School District 97, providing tours of the Home and Studio and Froebel Block workshops to all fourth grade students (over 600) annually.

## EDUCATION: TEACHERS AND FAMILIES

## 2018 STUDENT INTERNSHIP PROGRAM

The Trust provides internship opportunities to students, graduates, and career-changers seeking to broaden their experience by working and learning in a professional museum environment.

### EDUCATION

Ethan Walker      University of Michigan  
Erin Flannigan      The University of Chicago Laboratory Schools

### GUEST RELATIONS

Daniel Zawadzki      Bradley University  
Marisa Wilkens      University of Cincinnati  
Robert Skoronski      Yale University

### WRIGHT PLUS

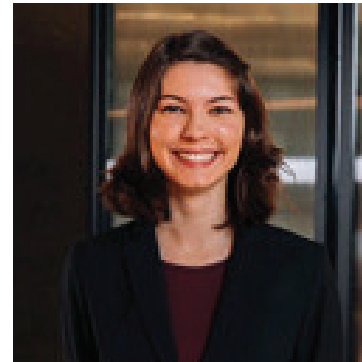
Evangeline Reid      University of Chicago



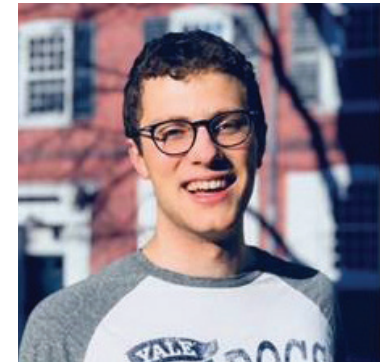
Daniel Zawadzki



Ethan Walker



Marisa Wilkens



Robert Skoronski



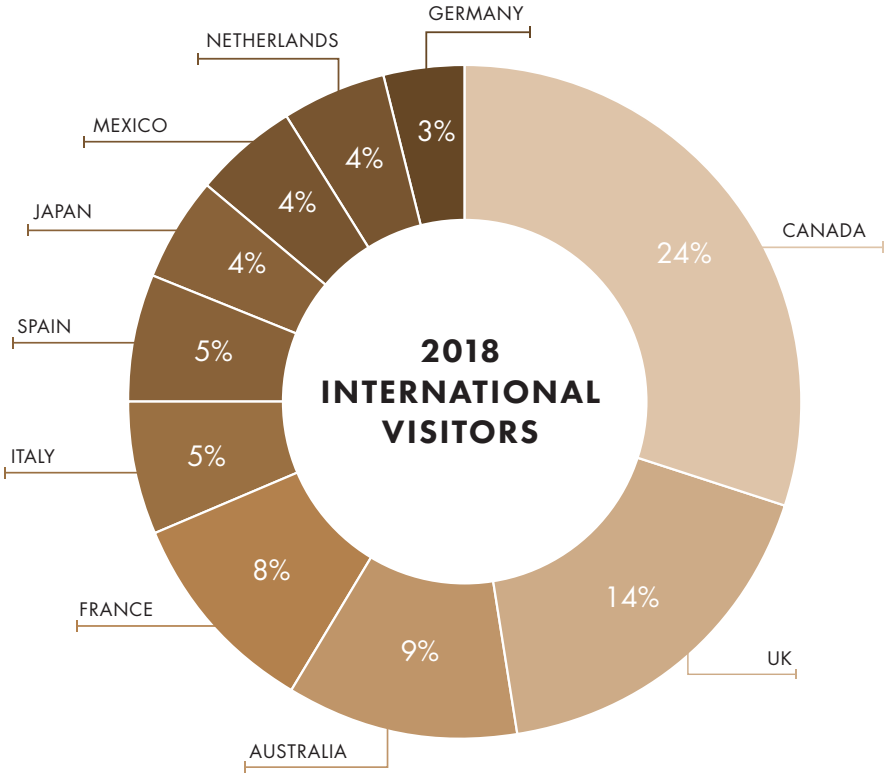
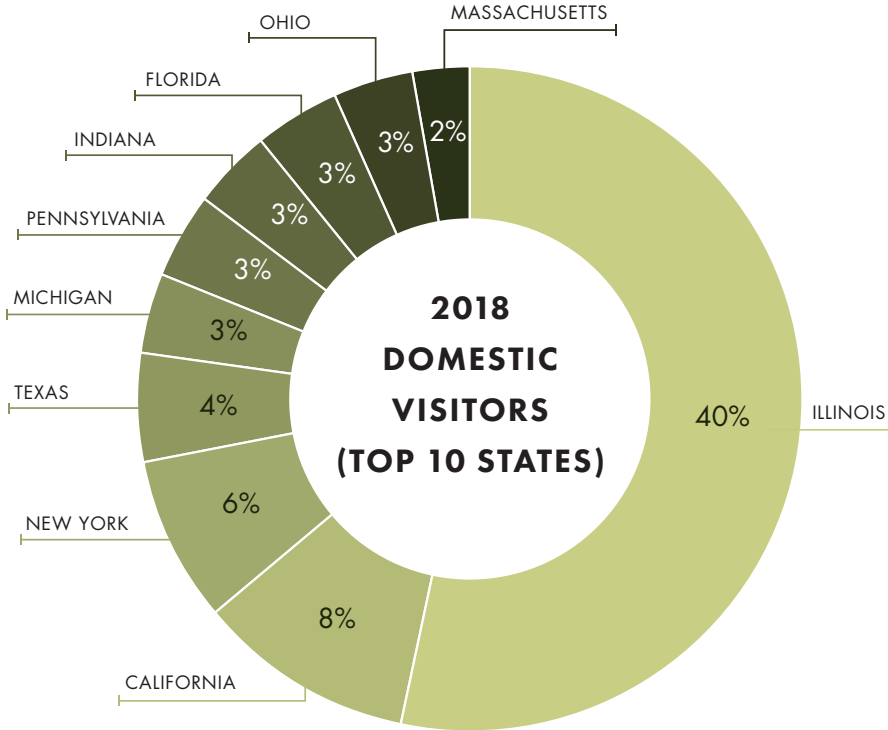
Evangeline Reid

*Not pictured – Erin Flannigan*

## INTERNSHIP PROGRAM



As the "gateway to Frank Lloyd Wright in Chicago," the Trust served more than 147,000 visitors at sites in 2018.



# AUDIENCE INFORMATION

The Frank Lloyd Wright Trust partnered with organizations throughout 2018. Partnership types include audience outreach, marketing and promotions, K-12 education, tour programs, tourism promotions, community engagement, and special events. Trust partners are below-listed.

American Institute of Architects-Chicago

Art Institute of Chicago

At Home in Chicago, Association of Chicago House Museums

Blue Star Museums

Chicago Architecture Foundation

Chicago Flower and Garden Show

Chicago Public Schools

Choose Chicago

Dana-Thomas House Foundation

Downtown Oak Park

Frank Lloyd Wright Building Conservancy

Museum Campus South

National Education Association (NAEA)

Oak Park Education Foundation

Oak Park Elementary School District 97

Oak Park River Forest Infant Welfare Society

Pettit Chapel

Tawani Enterprises, Inc.

Terra Foundation for American Art

The Laurent House Foundation

Unity Temple Restoration Foundation

Unity Temple Unitarian Universalist Congregation

University Club, Chicago

University of Chicago

University of Chicago Laboratory Schools

University of Chicago Oriental Institute

Village of Oak Park

Visit Oak Park



Exterior, Dana-Thomas House



Dana-Thomas House, sumac window art glass

*Photos: Dana-Thomas House Foundation*

**IN PARTNERSHIP WITH THE COMMUNITY**

## FOUNDATIONS

In 2018, the Trust received charitable support for historic preservation and restoration projects, education programs for children and teachers, lectures and public programs, community outreach, and general operations from the below-listed foundations.

Alphawood Foundation  
Good Heart Work Smart Foundation  
Illinois Arts Council Agency  
John D. and Catherine T. MacArthur Foundation  
The Meijer Foundation  
Network for Good  
Oak Park Area Arts Council  
Rancho Santa Fe Foundation  
Tawani Foundation  
Viñoly Family Foundation  
Wallis Austin & Virginia Bennett Austin Charitable Fund

## BUSINESS PARTNERS

Business Partners supported Trust operations through event sponsorships and charitable contributions of \$1,000 or more in 2018. Business Partners are listed alphabetically.

@properties  
Albion Residential  
Andersen Tax  
ARZU Studio Hope  
Bach House  
Baird & Warner, Inc.  
Baker & McKenzie  
Bradbury & Bradbury Art Wallpapers, Inc.  
Blue Cross Blue Shield of Illinois  
BMO Harris Bank  
Carleton of Oak Park  
Chicago Office Teach Group  
Chicago's North Shore CVB  
Commonwealth Edison Company  
Community Bank of Oak Park and River Forest  
Downtown Oak Park  
Google, Inc.  
Heidrick & Struggles  
Jones Day  
Katten Muchin Rosenman LLP  
KPMG  
Leopardo Companies  
McDermott Will & Emery  
McGrath City Honda  
Merrill Lynch  
Northern Trust Bank  
Perkins Coie Foundation  
Poinsett Insurance Agency – Farmers Insurance  
Radio Flyer, Inc.  
Reuse Depot  
Searls Windows & Doors, Inc.  
US Bank  
Village of Oak Park  
Visit Oak Park  
West Rock  
West Studio Inc.  
West Suburban Medical Center

## BUSINESS SUPPORT

Additional business support up to \$999 is listed alphabetically.

Cucina Paradiso  
Gagliardo Realty Associates  
Giordano's of Oak Park  
Hemingway's Bistro  
Il Vicola Trattoria  
Mickey's Gyros  
The Little Gem, Inc.  
Petersen's Ice Cream  
Robert Bosch Tool Organization  
That's Our Bag  
University of Chicago Medicine  
Waldorf Astoria Chicago  
Winberie's Restaurant and Bar

## MATCHING GIFTS

Alliance Data  
Caterpillar Foundation  
Exelon Foundation  
GE Foundation  
Home Depot  
Illinois Tool Works Foundation  
Pfizer Foundation  
Progressive Insurance Foundation  
Walmart  
Wrigley Company Foundation

# FOUNDATION AND BUSINESS CONTRIBUTORS

The Frank Lloyd Wright Trust recognizes with gratitude the generous support of the following individuals from January 1, 2018 through December 31, 2018.

## INDIVIDUAL SUPPORT

### \$25,000+

Patricia and T. Kendall Hunt

### \$10,000—\$24,999

Maya Manny

Robert Pasin and Muriel Quinn

John Rafkin and Anita Levin

John W. and Jeanne M. Rowe

Kelly and Michael Small

### \$5,000—\$9,999

Allan and Suzette Bulley, Jr.

Raymond and Lisa Lewis

Don and Karen Rosenwinkel

### \$2,500—\$4,999

Celeste M. Adams

William Kundert and Judi Davenport

Carol R. McGee

Joan and Lou Mercuri

Robert Moriarty

Graham J. Rarity

Loren M. Rogers

Jeff and Elaine Tomski

### \$1,000—\$2,499

Kime and David Adler

Rick and Kathy Brown

Patrick and Jeanette Cannon

Rebecca and Timothy Doar

Michele and John Donley

David and Toni Dunning

Gabriela Freese

Peter and Jeanine George

Keith and Kathy Glennan

Christopher and Gloria Graham

Gary and Kim McCullough

Mary and Bruce McLeod

Robert Miller and Amy Renzulli

Kurt and Mary Jane Neumann

George Sargent

Benjamin and Hollis Sax

Lorna Straus

Randall and Laura Thorne

Kenneth and Nan Unklesbay

Peter Yankala and Donna Lamm

Craig Zimmerman

### \$500—\$999

Marilyn Cantisano and Donald Southworth

Linton J. Childs

M. Fainer

Carla and Leonard Feinkind

Kim Floyd

Mary L. Gray

Judith Hardardt

Laura and Eric Jordahl

James and Patricia Jurgens

Ellen Kuner

Nichole and Michael Linhardt

Stewart Macaulay

Daniel Madden

Norman and Helene Raidl

John and Theresa Rigas

Mark and Sally Smylie

Anthony M. Smyth

Henry and Milly Vande Kieft

Peter H. Wollenberg

## DONOR CIRCLE

**These donors contributed cash gifts of \$2,500 or above in 2018.**

Celeste M. Adams

Allan and Suzette Bulley, Jr.

Patricia and T. Kendall Hunt

William Kundert and Judi Davenport

Raymond and Lisa Lewis

Maya Manny

Carol R. McGee

Joan and Lou Mercuri

Robert Moriarty

Robert Pasin and Muriel Quinn

John Rafkin and Anita Levin

Graham J. Rarity

Loren M. Rogers

Don and Karen Rosenwinkel

John W. and Jeanne M. Rowe

Kelly and Michael Small

Jeff and Elaine Tomski

## DONORS

**Individual Support – Continued**

**\$250—\$499**

Marcia D. Bansley  
Lieselotte N. Betterman  
Sue Blaine  
Bob Ciano  
Terrance and Carol Coleman  
Paul J. Davis  
Richard and Alice Godfrey  
Thomas Gull and Timothy Flesch  
Alan D. Isaacson  
Norman and Barbra Jung  
Jack and Mary Ellen Lesniak  
John and Nell Lurain  
Susan M. Maltese  
Joan L. Pantsios  
Mike Poirier  
Don and Carol Randel  
Jeff and Linda Schroeder  
Mark S. Scott  
Debra A. Shamble  
Gary and Enid Shapiro  
John and Marsha Shyer  
Carolyn J. Sorensen  
John Vinci  
Albert Walavich  
Kathy Wilders

**\$100—\$249**

Charles Abelmann  
Kathleen M. Andrykowski  
Thane K. Arnold  
Dwight and Sharyn Austin  
Cherie Balan  
Kelly Ballor  
Andrea Bauer  
Roger Behler  
Brian Bollenbacher  
William C. Brauneis  
Stephen and Elizabeth Bruner  
Elizabeth and David Clark  
G. J. Coatsworth  
Thomas Corfman  
Douglas and Sandra Cotanche  
Brian Crawford  
Karen Crippen  
Michael and Ann Cullinane  
Elizabeth Danzico  
Stanley and Christine Davis  
Pamela Deady  
Valerie and William DePriest  
Casey G. DeSalvo  
John E. Dieter  
Peg DiGiammarino  
Connie Fairbanks and Kirk Twiss  
David Fanta  
William Ferbrache



**Individual Support** – Continued

Brian Flora  
Thomas Fontana and Sagan Lewis  
Doug Freerksen  
Thenice Gall  
James Gallagher  
Mary Galligan and John Camper  
Leigh Gates  
Margie Gipson  
George S. Hallenbeck  
Frank Hankins  
Kathy Hansen  
Stacey L Harloe-Mowery  
Max William and Jo Ann Harp  
Richard Harrison  
Jo N. Hays  
Craig and Judy Hodson  
George J. Johnson  
Jared Kaplan and Maridee Quanbeck  
Richard Katz  
Jacqueline A. Kinnaman  
Kofi Kwarteng  
Jack Ladinsky  
Elizabeth Legette  
Susan and Marc Martinez  
Patrick McGrath  
George I. Meyer  
Roger and Ellen Miller  
Michael and Deborah Miller  
Kevin and Marianne O'Donoghue

Keith and Christine Olson  
Barbara and Paul Oppenheim  
Kriss T. Ostrom  
Steve and Linda Parker  
Frank C. Pond  
Lisa and Alan Reed  
Susan Remington  
Pamela C. Reynolds  
Jody Rhodea  
Eileen Robbins  
Brian and Susan Schanning  
Dawn and George Schumann  
Alan and Kathryn Sheehan Nesburg  
John and Lacey Sikora  
Michael J. Siska  
Yvonne Neu Smith  
Brent and Patricia Smith  
Kathryn and Randy Smith  
Sue E. Stealey  
Charles and Nancy Sweetman  
Elizabeth Taylor  
Mark S. Thorne  
Mary Trammell  
Kyle Vander Meulen  
Susan and Arthur Vogt  
Nancy Waichler  
Dena M. Weisbard  
Chuck and Sallie Wolf  
David and Suzanne Zimmerman



## IN HONOR/MEMORY

### Gifts In Honor

In honor of John Rafkin

Lee F. Rafkin

In honor of Jerry Rosenthal's service  
at the Frank Lloyd Wright Home & Studio

Terry and Jerald Rosenthal Philanthropic Fund

In honor of Jerry Rosenthal's service  
at the Frank Lloyd Wright Home & Studio

Terry and Jerald Rosenthal

In honor of John Rafkin

Hollis and Benjamin Sax

In honor of Robie House

Lorna P. Straus

In gratitude for Risa Sekiguchi

Henry Whiting

In honor of Robie House

Peter Yankala and Donna Lamm

### Gifts In Memory

In memory of Joyce Monroe

Janet Barkley

In memory of Grace Staver Rarity

Mary K. Crane

In memory of Bette Pappas

Gwen Grogan

In memory of Carter Manny

Maya Manny

In memory of Ray Mills

Fritz and Fay Michaelis



*Photos: Anne Evans*

Member support helps the Trust continue to touch lives through Wright’s original work by providing vital resources for educational programs and preservation of our historic sites.

**CURRENT SOCIETY LEVEL MEMBERS:**

**Skylight Society**

- Mr. Tom Alexander
- Mr. Kenneth Bagan
- Mr. and Mrs. Keith Clayton
- Howard Cohen and Dona Robbins-Cohen
- Mr. and Mrs. Robert Feeney
- Alex Gibson and Mary Hendrickson
- Ms. Vicki Giles
- Mr. and Ms. Thomas Glennan
- Mr. Daniel Grangaard
- Mr. and Mrs. James A. Graves
- Mr. and Mrs. Bill Greffin
- Mr. Richard L. Hess
- Mr. Loren D. Kaiser
- Dr. and Mrs. Paul Lyons
- Craig and Roberta MacGlashan
- Susan and John Major
- Mr. and Mrs. Terry Marbach
- Mr. James W. Neupert
- Ms. Julie Overbeck
- Barbara Quilty and Matthew Magnifico
- Mr. Loren M. Rogers
- Mr. Thomas R. Schiff
- Mr. and Mrs. Joel Schoenmeyer
- Mr. James Smith

- Drs. Kenneth and Nan Unklesbay
- Ms. Debra N. Walters
- Mr. and Mrs. Thomas D. Whittington
- Mr. Craig Zimmerman

**Inglenook Society**

- Dr. Alvin Bronstein
- Mr. and Mrs. Bill Christensen
- Mr. and Mrs. Douglas M. Collins
- Ms. Debra Floyd
- Ted and Deborah Giesler
- Mr. and Mrs. Richard Gray
- James Hayes and Catherine Keig
- Mr. and Mrs. H.M. Jensen, III
- Mr. Stewart Macaulay
- Dr. and Mrs. Ryan Mayhew
- Mr. and Mrs. Gary McCullough
- Joseph Nordsieck and Melanie Ringer
- Mr. and Mrs. John K. Notz Jr.
- Mr. and Mrs. Jeffrey Petertil
- Mr. J. Sean Plater
- Mr. and Mrs. Hugh Reardon
- Ms. Patricia S. Schwartz
- Mr. Jack Waters

**Octagon Society**

- Anne Agee and Robert Dixon
- Ms. Nancy Alpert
- Mr. and Mrs. Chris Baumann
- Mr. Fred Bauries
- Ms. Lieselotte N. Betterman
- Mr. and Mrs. Mark Brandyberry
- Marilyn Cantisano and Donald Southworth
- Ann and Kevin Casey
- Mr. and Mrs. Douglas Cole
- Mr. and Mrs. Terrance J. Coleman
- David Coup and David Smith
- Mr. Robert R. Dahl
- Dr. and Mrs. Paul J. Davis
- Mr. Dave DeCaro
- Dr. and Mrs. Eugene DeSombre
- Mr. Eric Dietz
- Mr. James G. Dill Jr.
- Mr. and Mrs. John Donley
- Bill Donnell and Claudia Daly
- Mr. Dale Eaman
- M. Fainer
- Mrs. Kim Floyd
- John Patrick Garrett
- Mr. and Mrs. Richard H. Geary Jr.

- Mr. and Mrs. Jeffrey C. Grip
- Mr. and Mrs. Robert Guritz
- Mr. T. Gunny Harboe
- Mr. and Mrs. William Hopson
- Mr. and Mrs. James B. Jurgens
- Ms. MarLen Kaiser
- Sona Kalousdian and Ira D. Lawrence
- Ms. Ann M. Krlcich
- Nell and John Lurain
- Marvin Mitchell and Neale Godfrey
- Mr. Jerrold Mohn
- Mr. and Mrs. Scott Moller
- Mr. William B. Neis
- Rhonda and Samantha Pearlman
- Mr. and Mrs. David Perry
- Mr. and Mrs. Dominic Pisani
- Karen Prince-Weithorn
- Mr. Dan Ryan
- Scott E. Schiave and Anne Hamblin Schiave
- Daniel Curry and Jennifer Schmidt
- Mr. David T. Sidney
- Mr. Anthony M. Smyth
- Mr. and Mrs. Timothy Snell
- Mr. and Mrs. Ron Spengler
- Mr. and Mrs. Mark Stampfl

**SOCIETY LEVEL MEMBERS**



## Octagon Society – Continued

Mr. Christopher V. Stevenson  
Christopher Straus and Curtiss Cohen  
Mr. and Ms. Robert Thomas  
Ms. Marcia Thomas  
Mr. and Mrs. Thomas Thorpe  
Mr. and Mrs. Michael J. Trimbach  
Mr. and Mrs. Henry A. Vande Kieft  
T. Snow Wolf Wagner and David Klein  
Mr. Steven Young

## Prairie Society

Mr. and Ms. Joshua Abrams  
Dr. and Mrs. Thomas Acton  
Janice L. Miller and David A. Acton  
Mr. and Mrs. Mark Adams  
Mr. and Mrs. Thomas Adams  
Nancy Adkins and Brant Abrahamson  
Eric and Catherine Allen  
Mr. and Mrs. Ken Allen  
Frank Lloyd Wright's Allen House  
Moana and Erik Andersen  
Mary Andrus and Tim Lynch  
Mr. Thane K. Arnold  
Ms. Morgan G. Aronson  
Mr. and Mrs. Thomas Auguste  
Mrs. Marcie Austen  
Ms. Carol Austin  
Debera Backhus and Anna Boyle  
Carla Bailey and Michael Duncan  
Mr. Roger Baker

William Baker and Anthony Stull  
Dr. and Mrs. James E. Banta  
Richard Barker and Scott Renn  
Mr. Earl Barnes  
Carolee and Brooks Barrett  
Mr. and Mrs. John Barton  
Luke Basic and Sarah Kimmel  
Alan Batteiger and Paula Mann  
Mr. and Mrs. Thomas Batterham  
Ms. Andrea Bauer  
Mr. and Mrs. Terry Baxter  
Mr. John Beddoe  
Mr. and Mrs. James Bedi  
Mr. and Mrs. Roger Behler  
Vicki and James Bell  
Mr. A. Stuart Bennett  
Ms. Christina Berben  
Mr. and Mrs. Dale Berns  
Dr. Robert Beverly III  
John Biek and Christina Norton  
Mrs. Sharon Bigot  
Laura and John Bilson  
Mr. and Mrs. Norman Bishop  
Mr. and Mrs. Alex Blair  
Mr. and Mrs. Fred Blake  
Mr. and Mrs. Karl Blanchard  
Barbara Bayldon and Joel Block  
Mr. and Mrs. Jay Boardway  
Mort and Jennifer Boland  
Mr. George V. Bowen

Heidi Bowlus and Rachel Bowlus  
Mr. and Mrs. Ralph Bowman  
Mr. and Mrs. Joe Brackett  
Ms. Susan Branch  
Mr. and Mrs. William Brander  
Mr. Lawrence E. Bray  
Mr. David Brent  
John and Marcie Britton  
Ian Brown and Barb Parish  
Layne and Rebecca Brown  
Mr. S.T. Brown  
Mr. and Mrs. Gary Bruck  
Todd and Cathie Buch  
Mr. and Mrs. Shad Burkiett  
Miss and Mr. Brooklyn Burmeister  
Mr. and Mrs. Eugene H. Byers  
Ms. Barbara J. Byrum  
Amr Abdelaziz and John Calcagno  
Ms. Jocelyne Caldwell  
Mr. and Mrs. Howard Cantor  
Ms. Vera Capp  
Ms. Susan Cardoni  
Carleton of Oak Park  
Anne and Bryce Carmine  
Sandi and Corwin Carr  
Mr. and Mrs. Angelo Catalano  
Drew W. Cates and John H. Fix  
Mr. and Mrs. Jeff Cauffman  
Mr. Howard C. Cavner  
Mr. and Mrs. David S. Cecchini

Lisa and Richard Cederoth  
John and Jaqueline Ceisel  
Mr. and Mrs. Cande Celio  
Jack Cella and Laura Prail  
Mary Chamberlin and Ray Watson  
Mr. Emile Charest  
Ms. Monique Chase  
Mr. Linton J. Childs  
Mr. and Mrs. Jim Choate  
Mr. and Mrs. Robert Christensen  
Nancy and Brian Christensen  
Mr. and Mrs. Roger Christy  
Mr. and Mrs. Edward A. Chuhna  
Pam Church and Fred Popp  
Gloria and Katherine Cichy  
Mr. and Mrs. Vincent Clary  
Ms. Michelle Clemons  
Mr. and Mrs. Michael Coleman II  
Ms. Patricia J. Coleman  
Mr. Stephen Joel Coons  
Mr. and Mrs. G. Rogers Cooper  
Mr. and Mrs. Mark Costello  
Mr. Steven W. Cox  
Mr. and Mrs. Andrew Craven  
Dr. Martyn Crook  
Mr. Arthur Crook  
Mr. Charles Crowder  
Ms. Ellen Darling  
Dr. and Mrs. Tapas Das Gupta  
Ms. Barbara C. Davis



**Prairie Society** – Continued

David G. De Marco  
Mr. and Mrs. Michael Dedek  
Mr. Thomas Deimel  
Richard and Patricia DeiTos  
Ms. Eunice M. DeMello  
Ms. Martine Derom  
Huimin Diao and Yu Fu  
Mr. Matthew Dickey  
Mr. John E. Dieter III  
Mr. Vernon Dietz  
Mr. Eugene H. Diggs  
Mr. and Mrs. Howard Dittmer  
Mr. and Mrs. Steven Dixon  
Mr. and Mrs. John V. Donofrio  
Mr. Dennis P. Doordan  
Mr. and Mrs. Jon Doucleff  
Mr. and Mrs. Norman W. Douglas  
Chris and Carol Dubrowski  
Robert Duffin and Dee-Dee Darby Duffin  
Mr. Daniel Duncan  
Ms. Mary M. Dunea  
Ms. Theresa Duphare  
Mr. and Ms. Andy Ebbott  
Mr. Gregory Eisenstadt  
Douglas and Michelle Eldredge  
Mr. Howard Ellington  
Derek Emery and Blanca Eguia  
Mr. Chuck Emick  
Dr. Moshe Engel  
Nilo Erice and Tim Schumacher

Ms. Irene Erwin  
Dr. David Estes  
Debbie Etri  
Susan Pentzer Eubinag & Glenn Eubinag  
Hazel S. Fackler  
Connie Fairbanks and Kirk Twiss  
Laura Farnsworth Chelsen and Caitlyn Chelsen  
Mr. David Faurio  
Anna May and Timothy Feige  
Andrew Feldman and Brett Jacobs  
Ms. Virginia Ferrante-Iqbal  
Mr. and Mrs. Diego Ferro  
Mr. and Mrs. William J. Ferry  
Mr. and Mrs. Lynn Finley  
Ms. Cynthia D. Fitzharris  
Patti and Dennis Fleming  
Fred Flintstone  
Mrs. Lynda P. Fogle  
Thomas Fontana and Sagan Lewis  
Mr. and Mrs. Tim Foster  
Edward and Lynne Francis  
Ms. Martha Franklin  
Ms. Kathryn Freidel  
Dr. William French  
Ms. Caitlin Fry  
Ms. Barbara N. Fuldner  
Mr. and Mrs. Sandford Furman  
Renata Gasperi  
Ms. Gaston and Mrs. Keebler  
Mr. and Mrs. Jim Irwin

George Geary and Neil Bonner  
Ms. Lori Gentile  
Andrea Georgelos and Nathan Gardner  
Mr. Noah Gerding  
Mr. and Mrs. David Gill  
Mr. Donald Goerig  
Barry Gomberg and Alice Kuhn  
Marc Gordon and Glenna Lally  
Lisal and Don Gorman  
Rose and Matthew Graca  
Mr. Jason Greenberg  
Mr. Mark Grenier  
Sara Griffiths and Thomas Connell  
Mr. Duane Griffus  
Mr. Stephen Groh  
Mr. and Mrs. Jeffrey Grohne  
Cynthia Gronkiewicz and Mark Tomera  
Mr. Alan Grossman  
Anne and Daniel Groves  
Dr. and Mrs. Fred Guenther  
Mr. Steven P. Guild  
David Guth and Michael McDeid  
Mr. and Mrs. Timothy Hagen  
Nicole and Doug Hall  
Mr. and Mrs. Marcelo Halpern  
Dr. and Mrs. David Hancock  
Patricia Hanson and Susan Hertzfeldt  
Margaret Harris and Phil Straus  
Susan M. Harsha



Mr. and Mrs. James R. Hartland  
Sandra and Kevin Hartman  
Mr. and Ms. Thomas Harvey  
Michael Hayes and Jeanne Cloughley  
Suzanne and Emil Heintzinger  
Ms. Maria Helm  
Mr. and Mrs. Jason Hennes  
Donna Heroux-Everson and Ray Everson  
Mr. Rob Herrema  
Mr. and Mrs. Bruce Hildabrand  
Anthony and Melissa Hiller  
Walter Ho and Vanessa Morales Ho  
Mr. and Mrs. Craig Hodson  
Megan Holborn and Micheal Owen  
Mr. Stephen Hollander  
Kim Holmes and Tim Kaczocha  
Mr. and Mrs. Bill L. Holmes  
Mr. and Mrs. Phil Howard

**Prairie Society** – Continued

James Howe and Carol Kamm  
Elizabeth Howland and Dennis Zavac  
Lucianne and Lon Hudak  
Jessica Huerta and Effren Gutierrez  
Kurt and Maria Hull  
Mr. and Mrs. Michael Huskisson  
Linda and Scott Hutchins  
Mr. and Mrs. Randy Hytjan  
Russell Irving and Margaret Linnartz  
Mr. Alan D. Isaacson  
Carl and Diane Iseman  
Carol Jabs and Alfred Schectman  
Amy and Carl Jackson  
Coreen and Ron James  
Marie and Mike James  
Ms. Karin Janik  
Mr. Stephen Jaskowiak  
Mike Jaynes and Donna Jaynes-Hoffman  
Emily and Dave Johnson  
Mr. and Mrs. Willis Johnson  
Mr. Michael Johnson  
Tonya and Dwayne Johnson  
Mr. Kelly Jones  
Laura and Eric Jordahl  
Mr. and Mrs. Michael Jorgensen  
John Judd and Karen Olesen  
Mr. and Mrs. Norman O. Jung  
Mr. and Mrs. Fred Kamps  
Richard and Joseph Kania

Marilyn Kapaun and Steve Kapaun  
Jared Kaplan and Maridee Quanbeck  
Ms. Yvonne Katerman  
Mr. Richard Kato  
Maire and Vic Katyal  
Michael and Sharon Kearney  
Mr. John T. Keefe  
Mr. and Mrs. Thomas Keefer  
Marlin and Jeanne Keesler  
Mr. David J. Kelly  
Ms. Kathleen Kendra  
Mr. and Mrs. James Kenton  
Ginge and Gerry Kettenbach  
Dr. Katherine Kientzle  
Mr. Thomas Kilcoyne  
Mark Killian and Tina Kuska  
Mr. Walter Killingsworth  
Mr. and Mrs. Robert L. Kinney  
Mr. and Mrs. James Knoedler  
Mr. Michael Koch  
Elizabeth and Kent Kochheiser  
Mr. and Mrs. Jim Koczot  
Brian Koenigberg and Lisa Watson  
Ms. Susan Kogan  
Dr. and Mrs. Daniel J. Koretz  
Kimberly Brown and Robert Koutek  
Daniel and Christa Krout  
John Krzykoski and Michael McCreight  
Christine M. LaGana and Joseph Raist

Mr. Amir Lagstein  
Mr. and Mrs. Lou LaGuardia  
Mr. and Mrs. R.D. Lammy  
Mr. and Mrs. Mike Lampkowski  
Ms. Marion Lang  
Mr. and Mrs. David Latz  
Laurent House Foundation  
Ms. Jean Lawrence  
Elaine and Thomas Layden  
Maureen and David Leach  
Mr. Don B. Leatherman  
Dr. and Mrs. Andrew Lee  
Mr. and Mrs. Richard Leishman  
Elizabeth Lesnick and Jonathan Gross  
Mr. Monte J. Levinson  
Ms. Xin Yi Lim  
Robert Lindstrom and Kathy Ehrig  
Mr. and Mrs. William Lipinski  
Robert Lippert and Kathleen Dwyer  
Dr. and Mrs. Lou Lombardi  
Mr. David Lucas  
Mrs. Laura Ludwig  
Mark Magnuson and Steven Westfield  
Mr. and Mrs. Kevin H. Mahoney  
Mr. Robert J. Mahoney  
Vera V. Mainz and Gregory Girolami  
Mr. and Mrs. Earl Major  
Mr. and Mrs. William Malcomb  
Mr. Drew Maloney

Gloria Manelis and Marie Manelis-Mack  
Mr. Theodore J. Manzke  
Timothy Markham and Melissa Kelly  
Mr. and Mrs. Scott A. Martin  
Carlos J Martinez and Patricia Lechowicz  
Johanthan and Mary Mason  
Ms. Jennifer Masterson  
Ms. Nina Mattarella  
Mr. and Mrs. Nathan Maune  
Stephanie May and Kirk Lamb  
Julie McClellan and Brittany Beckwith  
Elise McCurley and Elizabeth Davis  
Ms. Tracey McDonald  
Mr. and Mrs. Brad McGee  
Michelle and Byron McKinney  
Mr. and Mrs. Bruce McNulty  
Mr. Matt McQnown  
Mr. Dato' Ar. Zulkhairi Md Zain  
Mrs. Anne Metz  
Kelly and Tom Meyer  
Mr. George I. Meyer  
Ms. Elizabeth P. Meyer  
Mr. John Michael  
Mr. and Mrs. George Miller  
Ms. Faith Miller  
Dr. Eric Milliner  
Ms. and Mr. Lynn Mische  
Jeff Mishur and Janet Ray  
Mr. and Mrs. James Mitchell



**Prairie Society** – Continued

Victoria and Rebekah Mogilevsky  
Carla and Richard Moore  
Mr. and Mrs. Leon Moore  
Mr. Eric Moore  
Mr. James Moore  
Ms. Anna Morrow  
Marcia Mueller and Charles Prorok  
Peter Muha and Michael Lynch  
Mr. and Mrs. Robert F. Mulka  
Francis Murray and Katherine Brenner  
Leonard Muscolino and Duane Althoff  
Mrs. Elaine A. Nap  
Rachael and Gabriel Nass  
Ms. Liliana Nazario  
Mr. and Mrs. Gregory Neblock  
Lisa and Paul Newkirk  
Mr. and Mrs. Richard Nichin  
Michael and Susan Nielsen  
Clayton Nightingale and Demetra Smith Nightingale  
Mr. and Mrs. Brad Nogar  
Mr. William Northrup  
Gayle Novig and Terry Mahn  
Bob Nuber and Betty Shanahan  
Ms. Jan O'Connor  
Mr. and Mrs. Keith L. Olson  
David and Bradley Olufs  
Dr. John Ortega and Ms. Maila Merced  
Mr. and Mrs. Gerald A. Ostermann

Mr. Mark Osterstock  
Mr. and Mrs. Richard Ouwenga  
Ami Owen and Mark Owen  
Eva Pajkrt and Jacobus Bakker  
Mr. and Mrs. John G. Palko AIA  
Mr. Paul A. Papier  
Drs. Allen and Georga Parchem  
Mr. Brennan Pardee  
Mr. Rohan Paul  
S. J. Perlow and Sandra Allen  
Mr. and Mrs. Martin E. Petroviak  
Mr. and Mrs. Michael J. Phend  
Amy Phillips and Judith Denicola  
Louis Piccoli and Karen Kozlowski  
Mr. and Mrs. Louis Pignotti  
Linsey Pilkinton and Tracey Pilkinton  
Mr. and Mrs. Douglas L. Pinney  
Mr. Michael Pipher  
Wilma Plazak and Carey William Plazak  
Mr. and Mrs. Daniel Popp  
Mr. and Mrs. Tom Pounds  
Ms. Glenna S. Powell  
Mr. and Mrs. Mark T. Prendeville  
Mr. and Mrs. Frank Pride  
Mr. Gary Priestap  
Mr. Steven Pulimood  
Ken Qualls and Linda Lantry  
Kanchan and Peter Quinlan  
Mr. and Ms. Douglas Radick

Mr. and Mrs. Jaime Ramirez  
Mr. Scott Rand  
Mr. and Mrs. Greg Rechtsteiner  
Lynn and Ian Reede  
Harold Rees and Emily Culbertson  
Karen Richter  
Milton Rivera  
Mr. and Mrs. Larry Robbins  
Mr. and Mrs. R. Michael Robinson  
Mr. Milton J. Robinson  
Ms. Maria T. Roche  
Angelyn and Justin Rockenbaugh  
Mr. Ed Rogan  
Ms. Deborah Rogers  
Brian and Mary Gail Rohr  
Mr. and Mrs. Gerald A. Role  
Mr. and Mrs. Darryl Rose  
Mr. Jerald Rosenthal  
Ms. Jo Ann Ross  
Mr. and Mrs. John Rottersman  
Mr. Marshall Rousseau  
Ms. Patricia Rowland  
Stephen Roy and Lloyd Kohler  
John Royster and Katie Blesener  
William Roznowski and Christine Laperuto  
Ms. Cynthia Rudmann  
Ms. Mary Jane Russell  
Mr. and Mrs. James W. Ryan  
Robert Rzepka and Gabrielle Ryan

Kurt Sackman and Ana Liao  
Mr. Edward Sadtler  
Ms. Paula J. Santrach  
Mrs. Janice Sarkor  
Zachary Schaefer and Abby Garrison  
Ms. Janet S. Scheevel  
Mr. and Mrs. Richard Schlichting  
Suzanne and Katharine Schmachtenberger  
Mr. and Mrs. William Schoenbeck  
Monika and Bjorn Scholz  
Mrs. Mary Jo Schuler  
John Schwartz and Anne Drake  
Mrs. Susan Schwartz  
Barbara and Carrie Seanor  
Mr. and Mrs. Robert Sebastian  
Michael Segall and Joanna Yun-Joo Cheng  
Mr. Robert I. Selby  
Mr. and Mrs. Scott Shaner  
Mr. and Ms. Gary Shapiro  
David Shaw and Thomas Kane  
Dan Sherman and Michele Hartlove  
Daniel Shouvlin and Nancy McKibben  
Mr. and Ms. Robert Shuford  
Dr. Barbara Siepierski  
Ms. Barbara Skipworth  
Dr. and Mrs. Brent Smith  
Mr. Andrew Smith



Robie House living room area is curtained off

**Prairie Society** – Continued

Margaret and Randall Snittjer  
Mr. and Mrs. Richard D. Yant  
Ms. Janet Speer  
Dr. and Mrs. Jonathan Spenner  
Mr. and Ms. Thomas Spinelli  
Eva Stancey Flewelling and Thomas Stancey  
Ms. Jan Stanton  
Mr. and Mrs. Robert Stanwood  
Mr. and Mrs. Joseph Starshak  
Vanessa and Robert Steele  
Mr. Nelson C. Steiner  
Mr. and Mrs. Joe Stephen  
Ms. Sandra Sterba-Boatwright  
Douglas Stewart and Linda Sahagian  
Mr. William Stiles  
Mr. and Mrs. Ed Stinson  
Mrs. Jody Stokes  
Mr. Tim Strannix  
Linda and Thomas Surlak  
Mr. and Mrs. Gregory Surufka  
Ms. Barbara L. Sutton  
Mr. and Mrs. Don Swanton  
Mr. and Mrs. Daniel Sweeney  
Ms. Rita A. Swensson  
Mr. Newton TerMeer  
Vincent M. Territo  
Rebecca and David Thomas  
Leslie and John Toepfer  
Mr. and Mrs. Ronald Traub

Nicolas Tremblay and Florence Lambert  
Mr. and Mrs. Richard Trimble  
Beth Truett and Armon Haagen  
Mr. and Mrs. Carl Tsuji  
Ms. Theresa M. Tyranowski  
Marjory and Michael Ulm  
Mr. and Mrs. Tom Underwood  
Mr. and Mrs. James Usrey  
Mr. and Mrs. Garry Vaccaro  
Mr. and Mrs. Ronald Van Wey  
Mr. Gilbert Vara Jr.  
Mr. and Mrs. Scott Varwig  
Stephen Ver Halen and Jane Perkolup  
Ms. Debra Vicharelli  
Mr. and Mrs. George G. Vrechek  
Ms. M.D. Walters  
Ms. Xiaozhe Wang  
Mr. and Mrs. Philip Waninski  
Susana Ward and Karen Hostalet  
P. L. Watt  
Melissa Wells and Charles Lewis  
Ms. Kirstin Wells  
Jill and Vern Wennmaker  
Dr. and Mrs. George White  
Thomas and Nora White  
Mr. and Mrs. Michael Whitt  
Mr. Ken Wicks and Ms. Carol Wenk  
Miss Colette Wierzbinski  
Rev. Edward D. Wight

Mr. and Mrs. Kevin Wilkie  
Mr. and Mrs. Roy Williams  
Mr. C. Webb Williams  
William Wilson and Ethel Himmel  
Mr. John S. Winn  
Mr. Charles K. Wishmeier  
James Wisneski and Freida Johnson  
Alice Withaar and Colleen Rader  
Sue and Joe Wittman  
Dr. Wayne Wood

Dr. and Mrs. Gabriel Woodruff  
Mr. Lawrence W. Woodward  
Mr. Dana "Nick" Wyman  
Samuel and George Wyner  
Ms. Virginia Yeck  
Mr. Bernardo Zavattini  
Gale Zemel and David Mausner  
Mr. Long Zhang  
Ms. Lisa M. Zoia



*Designs for Modern Living: Chairs by Frank Lloyd Wright on display at Robie House*



In 2018, 500 volunteers contributed over 30,000 hours of service.

They spent 3,000 hours in training and continuing education activities, which included interpreter training for tours at the Home and Studio, Robie House, Unity Temple and specialty tour training.

Trust volunteers lead tours, host at events and assist guests at our sites.

## **VOLUNTEERING AT THE TRUST**

Trust volunteers are integral to the success of our tours and operations. Volunteers lead site tours, assist with guests, and support special events and projects. Their commitment allows the Trust to fulfill its mission, and we are grateful for their contribution of time and service.

- |                      |                   |                     |                      |
|----------------------|-------------------|---------------------|----------------------|
| Linda Abrams Bisberg | Gene Berkes       | John Burns          | Brett Clark          |
| Nancy Alpert Yarush  | Christine Bernard | Kristin Caffrey     | Erin O'Donnell Clark |
| Ann Alspaugh         | Stephan Bitter    | Helen Callahan      | Sue Cohn             |
| Sophie Amado         | Jack Bizot        | Beth Camery         | Marty Colchamiro     |
| Donna Ambrose        | Sue Blaine        | Elizabeth Camery    | Mary Colchamiro      |
| Stephen Andersson    | Linda Blaskovich  | Lee Campbell        | John Colucci         |
| Kris Anfuso          | Karen Borgstadt   | Adele Cannell       | Philip Colucci       |
| Nellie Angel         | Catherine Boshier | Deirdre Cannon      | Mary Ellen Conboy    |
| Doris Angell         | Stephen Bowen     | Patrick Cannon      | Julie Conmy          |
| Megan Arlow          | Maggie Boyaris    | Barbara Carlson     | Michael Connelly     |
| John Arnold          | Ken Boyer         | Julie Carpenter     | James Conway         |
| Karole Bair          | Karen Boyle       | Linda Carroll-Evans | David Cook           |
| Lauren Bair          | Peg Brandon       | Ian Carrus          | Lauren Cooper        |
| Cherie Balan         | Joan Brandt       | Kathy Carrus        | Sarah Corley         |
| Irene Balks          | Paul Braun        | Caitlin Castro      | Maria Corpuz         |
| Janet Barkley        | Katherine Braz    | Jay Champelli       | Royse Cramton        |
| Daniel Barnett       | Maureen Briza     | Emile Charest       | Brian Crawford       |
| Karen Barth          | Bruce Broerman    | Monique Chase       | Phyllis Creek        |
| Wes Barwick          | Marilyn Brumund   | Erika Chavez        | Michael Crist        |
| Sebastian Beaghen    | John Bruun        | Marian Chen         | Maureen Crotty       |
| Mary Bechtol         | Lawrence Bubel    | Ashley Chiu         | Debbie Crouch        |
| Deborah Becker       | Greg Bublitz      | Stacey Christensen  | Kimberly Darre       |
| Jeanette Becvar      | Arlene Bunis      | Christopher Chwedyk | Elise Daughhetee     |
| Hank Bell            | Janet Bunn        | Varun Cidambi       | Janet Davis          |
| Tim Bennett          | Margaret Burke    | Elena Cincione      | Miriam Davison       |



Volunteers Polly Novak, Kai Tzu Lu and Kathy Carrus

- |                |                   |
|----------------|-------------------|
| Christine Day  | Douglas Deuchler  |
| Pam Deady      | Brian DeVinck     |
| Bill Decker    | Mike Dianich      |
| Janice Delaney | Atala Diaz        |
| Amie DeLuca    | Felix Diaz        |
| Vicky Demakis  | Joey DiSantis     |
| Sally Dempsey  | Victoria DiSantis |
| Sareena Denis  | Rebecca Doar      |

**Volunteers – Continued**

Lisa Dodge	Robert Feeney	Art Gilfand	Joanne Hannum	Keith Hughes
Emily Dodson	Paula Fenza	Grady Gillan	Kathleen Hansen	Rosemary Hutchinson
Scott Dohr	Anne Ferri	Ruth Glaberson	Stacey Harloe	Natsuko Imamura
Debbie Donahue	Cathy Fey	Marge Gockel	Bob Hartnett	Jeff Jaglois
Vera Dowell	Alan Fierst	Amy Godino	Christine Hauri	Alyssa Jaracz
Tom Drebenstedt	Mark Finley	Donna Goetz	Kathryn Hausman	Linda Jebavy
Jan Novak Dressel	Joan Fiske	Janina Golab	Jo Hays	Tom Jeter
Daryl Duvall	Brian Flora	Derrick Golon	Dan Heiden	Gertrude Johnson
Maciej Dzumala	Alicia Fontanetta	Laura Goodey	Judith Heineman	Mary Johnson
Linda Eales	David Franek	Laurie Goody	John Hembling	Wayne Johnson
Trudi Eblen	Tina Frank	Martin Goulbourn	Judy Hembling	Harrison Jones
Leila Edwards	Gabriela Freese	Leslie Goyne	Kelly Hendrickson	Margaret Jones
Mary Egan	Judith Frei	Cliff Gray	Mary Hennessey	Christine Junious
Hanna Eimiller	Lawrence Frey	Peggy Greco	Janine Henry de Frahan	Andy Kaczkowski
C.L. Elliott	Linda Frey	Wendy Greenhouse	Harold Hering	Mary Kaleta
Melissa Elsmo	Gretchen Frickx	Geof Greer	Janelle Herr	Joan Kallas
John Enderle	David Frost	Felix Griggs	Dottie Hetzel	Larry Kameya
Mark Engelen	Susan Frost	Gayle Grindley	Gail Hofmann	Carol Ann Karlowski
Pam Erickson	Rosalie Fruchter	Margarete Gross	Ray Hofmann	Steven Karlowski
Peter Erickson	Linda Gallagher	Adrienne Guldin	Megan Holborn	Richard Katz
Gwen Evans	Mary Galligan	Earl Gundelach	Eileen Holderbaum	Paula Kavchak
Connie Fairbanks	Leigh Gates	Richard Guzman	Elizabeth Holley	Tom Keefer
Michael Farley	Mary Gear	Donna Hachiya	Ralph Holzem	Marlin Keesler
Andrea Farrell	Roger Geier	Jacob Hagan	Jeanne Hoogerhyde	Jean Kengott
Ann Fastert	Alex Gibson	Sally Hakes	Gary Howell	Lawrence Kengott
Julie Federico	Deb Giesler	George Hallenbeck	Debra Hruby	Michael Kennedy
Karen Feeney	Ted Giesler	Frank Hankins	John Hug	Jacqueline Kinnaman



Sue Blaine, the Wallis Austin Outstanding Volunteer of the Year and Susan Frost, a past recipient of the honor



Volunteers Ann Marohn and Jack Lesniak



**Volunteers – Continued**

Bill Kirchner	Ted Lawrence	Bill McDonald	Dave Morris
William Kirchner	Amy Lee	Eloise McDowell	Linda Mosier
Frederick Kluck	Roslyn Leehey	John McGraw	Colleen Mraz
Dennis Kmiec	Virginia Lennon	Katie McGuire	Carolyn Mulac
Laura Knitt	Carrie Leshyn	Karen McLean	Angela Murphy
Shirley Koelling	Jack Lesniak	Mary McLeod	John Murphy
Rick Koepke	Corrine Lettier	Rick McNees	Roselen Murphy
Nelson Koga	Donna Lettier	Stewart Meadows	Julie Myers
Leo Koonmen	Monte Levinson	Joyce Meddaugh	Kathy Nassios
Alma Koppedraijer	Janice Lewis	Dick Meister	Lynn Neils
Diane Koselke	Timothy Loftus	Joan Meister	Brett Nerstrom
Amanda Kowalski	Aubrey Lutz	Wilfred Mejia	Rebecca Nerstrom
Michele Kowalski	Daniel Madden	Aura Mena	Philip Neznanov
Vincent Kowalski	Susan Maltese	Bill Merrill	Lourdes Nicholls-Kaczowski
Margaret Kral	Sandra Mangione	Fritz Michaelis	Pam Niesluchowski
Linda Kravitz	Pamuella Mann	Carol Michelini	Samijeane Nordmark
Marie Kruse	Tom Marhevko	Kimberly Mikuta	Barbara Norrish
Lori Krzyzewski	Ann Marohn	Dee Millard	Gary Northrup
Donald Kumler	Ruth Martin	Lynn Miller	Polly Novak
William Kundert	Sam Marts	Chris Mlynarczyk	Bruce O'Brien
Ellen Kuner	Marcia Matavulj	Tim Mole	Marie V. Olmos
Barbara Kurth	Denise Mavity	Rocio Monge	Robert Olney
Rick Kwarcianny	Thomas Maxson	David Montgomery	Eric Olson
Vicki Kwarcianny	Katie Maxwell	Susan Montgomery	Susan Olson
Barbara Kwiatkowski	Kaitlyn Mays	Debra Moon	Virginia Opitz
Gregory Larvis	Gene McCormack	Helen 'Scotty' Moorman	Frank Orto
Barbara Lawrence	Nancy McCormack	Char Lyn Morris	Ute Osmer



The Kowalski family volunteers regularly

Mike Owen	Frank Patterson
Ginny Paddock	Katya Pavliuk
Gregory Padgett	James Peters
Gary Palese	Faith Peterson
Marshall Palley	Cheryl Phillips
Cynthia Pangani	Tom Phillips
Joan Pantsios	Don Pielin
Edward Pariser	Renee Pleshar
Carol Patterson	Mike Poirier
David Patterson	Frank Pond

**Volunteers** – Continued

Kay Poyner Brown	Jerry Rosenthal	Madonna Sivwright	Lynn Thomas	Samuel Watters
Alan Raphael	Denise Roser	Carolyn Skipper	Richton Thomas	Beverly Weable
Madeleine Raymond	Lance Royce	Dan Slouka	Jessica Thurk	Katelyn Weil
Nichole Reber	Lynne Ruch	Helene Slowik	Tim Thurlow	Michael Weiland
Nancy Reeder	Heidi Ruehle-May	Kristina Smith	John Tielsch	Steven Weis
Linda Reeve	Janet Sabri	Yvonne Smith	Pat Trafton	Elbert Whitfield
Jane Reich	Sean Sabri	Linda Solan	Ronald Traub	Amanda Willard
Helen Lee Reid	Chettha Saetia	Steve Sommers	Susie Trexler	Barbara Willard
Peter Reidy	Katya Samsonova	Amy Sorenson	Robert Trezevant	Carolyn Williams
Karl Reko	Kim Sargent	Norman Spielman	Denise Trylovich	Michael Williams
Ruth Reko	Kathleen Schalk	Amy Srodon	Richard Uebele	Wendi Williams
Susan Remington	Jeff Schertz	Susan Stack	Sherry Vale	Andria Wilson
Cecilia Resende-Santos	Erin Schettler	David Staskowski	Kyle Vander Meulen	Janina Wimunc
Pamela C. Reynolds	Ariel Schick	Michael Stewart	Kraig Vandiver	Madison Wittkofski
Mirella Ribaud	Bryan Schneider	Val Stewart	Janet Vasilenko	Simone Wright
Tony Riley	Peter Schramm	Kelsey Stimple	Janet Volk	Bryan Yanaga
Eduardo Rios	Jerrold Schulkin	Amy Stojkovich	Joyce Voss	Peter Yankala
Linda Rios	Jo Ann Schurman	Amy Stricker	Mary Wacker	Charles Young
Rose Rittenhouse	Gary Schwab	Gwen Stricker	Jana Wallace	Martha Yount
Eileen Robbins	Walter Schweiger	Kathy Stricker	Ellen Walsh	Peg Zak
David Robson	Mark Scott	Patti Sullivan	Jack Walsh	Mimi Zeigler
Irma Rodriguez	Janice Serafini	Teri Sullivan	Debra Walters	
Marlou Rodriguez	Valerie Sherman	Donald Swanton	Lauren Witkowski	
Mary Roeing	Ross Simmons	Maria Sweeney	Barbara Watkins	
Hiram Roman	Brian Simenson	Hannah Tatro	Roseanna Watson	
Ron Roman	Ken Simpson	Vivian Tedford	Terrence Watson	



Celebrating volunteers at Unity Temple



Mark Scott, winner of the Catherine McLaughlin Award, with Volunteer Resources Manager Linda Bonifas-Guzman and Sue Blaine, recipient of the Wallis Austin Award

Statements of Financial Position – December 31, 2018 and December 31, 2017

Statements of Activities – For the Years Ended December 31, 2018 and December 31, 2017

**STATEMENTS OF FINANCIAL POSITION**

<b>ASSETS</b>	<b>DECEMBER 31, 2018</b>	<b>DECEMBER 31, 2017</b>
Cash & Cash Equivalents	1,144,772	1,547,132
Accounts Receivable	17,041	5,663
Grants & Pledges Receivable, net	58,334	304,006
Inventory	325,805	448,783
Prepaid Expenses	117,933	83,331
Property & Equipment	5,621,056	3,766,275
Cash Held for Investment	37,298	37,298
<b>TOTAL ASSETS</b>	<b>7,322,239</b>	<b>6,192,488</b>
<b>LIABILITIES</b>	<b>DECEMBER 31, 2018</b>	<b>DECEMBER 31, 2017</b>
Accounts Payable	162,485	133,935
Accrued Expenses	131,355	130,840
Deferred Income	383,364	493,616
<b>TOTAL LIABILITIES</b>	<b>677,204</b>	<b>758,391</b>
<b>NET ASSETS</b>	<b>6,645,035</b>	<b>5,434,097</b>
<b>TOTAL LIABILITIES &amp; NET ASSETS</b>	<b>7,322,239</b>	<b>6,192,488</b>

**STATEMENTS OF ACTIVITIES**

<b>REVENUES</b>	<b>YEAR ENDED DECEMBER 31, 2018</b>	<b>YEAR ENDED DECEMBER 31, 2017</b>
Memberships	231,709	240,883
Contributions	272,485	1,229,243
Grants	1,790,420	6,300
Tours & Education	2,969,985	3,181,657
Merchandise Sales	2,043,966	2,068,891
Special Events	90,901	100,407
Investment Income	1,801	143
Licensing Revenues	22,704	320
Miscellaneous	4,610	4,575
In-kind Donations	167,839	315,989
<b>TOTAL REVENUES</b>	<b>7,596,420</b>	<b>7,148,408</b>
<b>EXPENSES</b>	<b>YEAR ENDED DECEMBER 31, 2018</b>	<b>YEAR ENDED DECEMBER 31, 2017</b>
Program Services	3,462,075	3,590,583
General & Administrative	1,373,538	1,153,894
Fundraising	473,340	625,074
Cost of Sales	1,076,529	1,074,850
<b>TOTAL EXPENSES</b>	<b>6,385,482</b>	<b>6,444,401</b>
<b>INCREASE (DECREASE) IN NET ASSETS</b>	<b>1,210,938</b>	<b>704,007</b>
NET ASSETS BEGINNING OF PERIOD	5,434,097	4,730,090
NET ASSETS END OF PERIOD	6,645,035	5,434,097

**FINANCIAL STATEMENTS**

---

The Frank Lloyd Wright Trust is a Chicago-based 501(c)3 that operates at five Wright-designed sites and a merchandise center. The Trust was founded and incorporated as a State of Illinois not-for-profit on June 17, 1974.

---

**CENTRAL OFFICES**

**The Rookery**

209 S. LaSalle Street, Ste 118  
Chicago, IL 60604  
312.994.4000

**FRANK LLOYD WRIGHT**

**HOME AND STUDIO**

951 Chicago Avenue  
Oak Park, IL 60302

**UNITY TEMPLE**

875 Lake Street  
Oak Park, IL 60301

**FREDERICK C. ROBIE HOUSE**

5757 S. Woodlawn Avenue  
Chicago, IL 60637

**EMIL BACH HOUSE**

7415 N. Sheridan Road  
Chicago, IL 60626

**flwright.org**